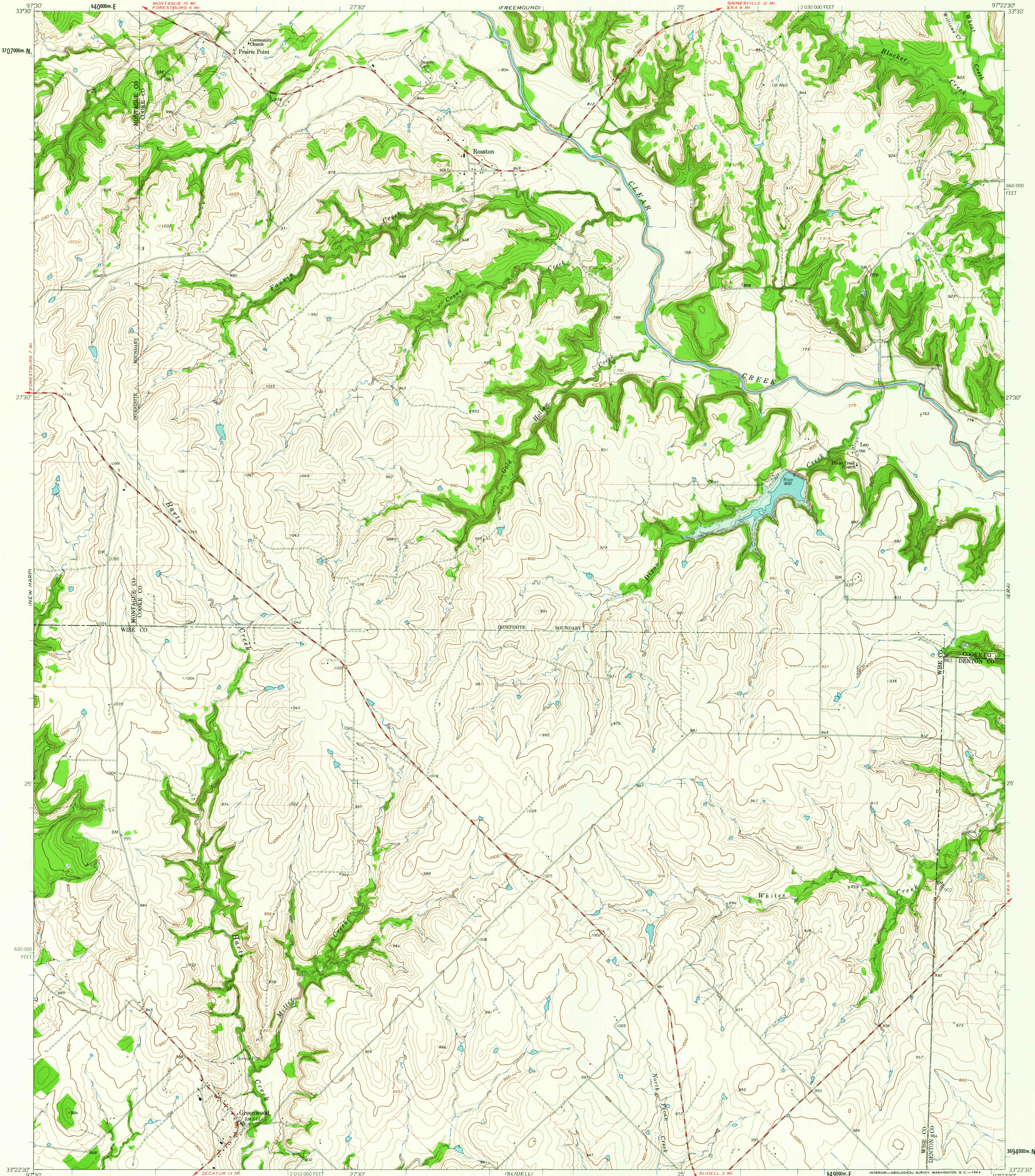


UNITED STATES
DEPARTMENT OF THE INTERIOR
GEOLOGICAL SURVEY

GREENWOOD QUADRANGLE
TEXAS
7.5 MINUTE SERIES (TOPOGRAPHIC)

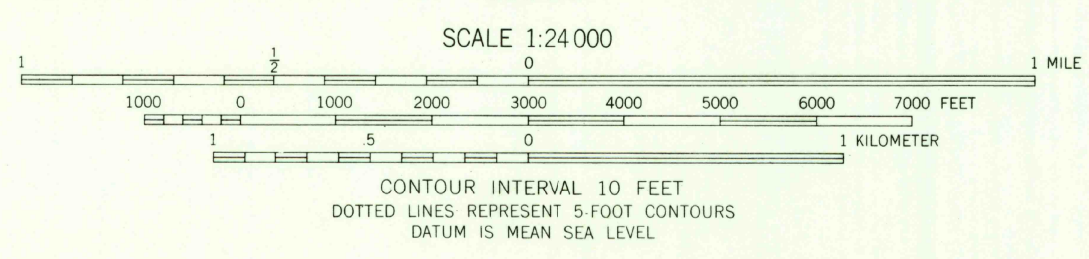
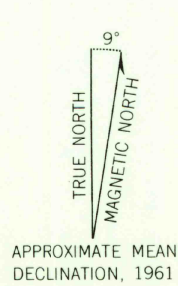


Mapped, edited, and published by the Geological Survey
Control by USGS and USC&GS

Topography by photogrammetric methods from aerial
photographs taken 1957. Field checked 1961

Polyconic projection. 1927 North American datum
10,000-foot grid based on Texas coordinate system, north central zone
1000-meter Universal Transverse Mercator grid ticks,
zone 14, shown in blue

Area covered by dashed light-blue pattern is subject
to controlled inundation
Fine red dashed lines indicate selected fence lines



THIS MAP COMPLIES WITH NATIONAL MAP ACCURACY STANDARDS
FOR SALE BY U.S. GEOLOGICAL SURVEY, DENVER 25, COLORADO OR WASHINGTON 25, D.C.
A FOLDER DESCRIBING TOPOGRAPHIC MAPS AND SYMBOLS IS AVAILABLE ON REQUEST



USGS
Historical File
Topographic Division

ROAD CLASSIFICATION
Medium-duty ——— Light-duty ———
Unimproved dirt =====

GREENWOOD, TEX.
N3322.5-W9722.5/7.5

1961

FEB 26 1964