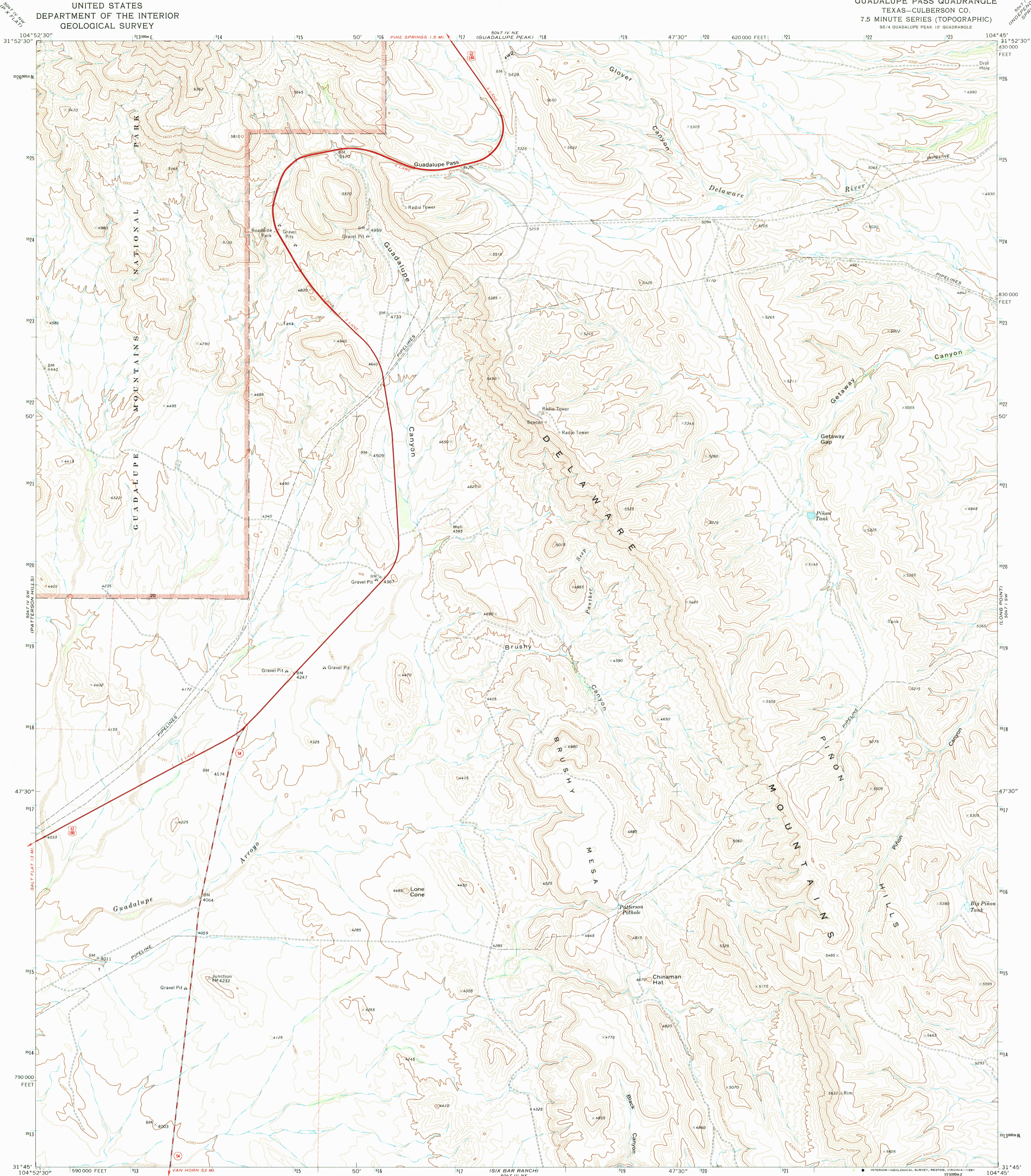


UNITED STATES  
DEPARTMENT OF THE INTERIOR  
GEOLOGICAL SURVEY

GUADALUPE PASS QUADRANGLE  
TEXAS—CULBERSON CO.  
7.5 MINUTE SERIES (TOPOGRAPHIC)  
SE 1/4 GUADALUPE PEAK 15' QUADRANGLE



Mapped, edited, and published by the Geological Survey

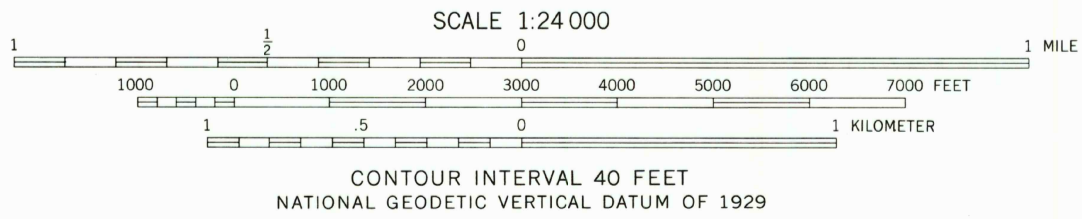
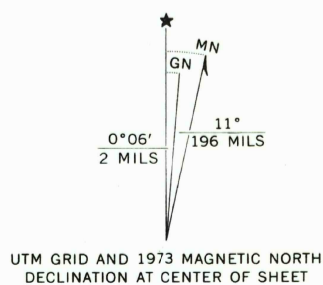
Control by USGS and NOS/NOAA

Topography by photogrammetric methods from aerial  
photographs taken 1972. Field checked 1973

Projection and 10,000-foot grid ticks: Texas  
coordinate system, central zone (Lambert conformal conic)  
1000-meter Universal Transverse Mercator grid ticks, zone 13,  
shown in blue 1927 North American Datum

Fine red dashed lines indicate selected fence lines  
The difference between 1927 North American Datum and North  
American Datum of 1983 (NAD 83) for 7.5 minute intersections is  
given in USGS Bulletin 1875. The NAD 83 is shown by dashed  
corner ticks

There may be private inholdings within the boundaries of  
the National or State reservations shown on this map

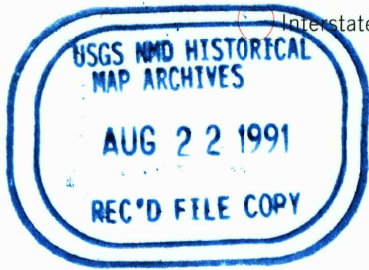


THIS MAP COMPLIES WITH NATIONAL MAP ACCURACY STANDARDS  
FOR SALE BY U.S. GEOLOGICAL SURVEY, DENVER, COLORADO 80225, OR RESTON, VIRGINIA 22092  
A FOLDER DESCRIBING TOPOGRAPHIC MAPS AND SYMBOLS IS AVAILABLE ON REQUEST



QUADRANGLE LOCATION

3104-331



ROAD CLASSIFICATION  
Primary highway, hard surface  
Secondary highway, hard surface  
Unimproved road  
Light-duty road, hard or improved surface  
Unimproved road  
State Route

GUADALUPE PASS, TEX.  
SE 1/4 GUADALUPE PEAK 15' QUADRANGLE  
31104-G7-TF-024

1973

DMA 5047 IV SE-SERIES V882