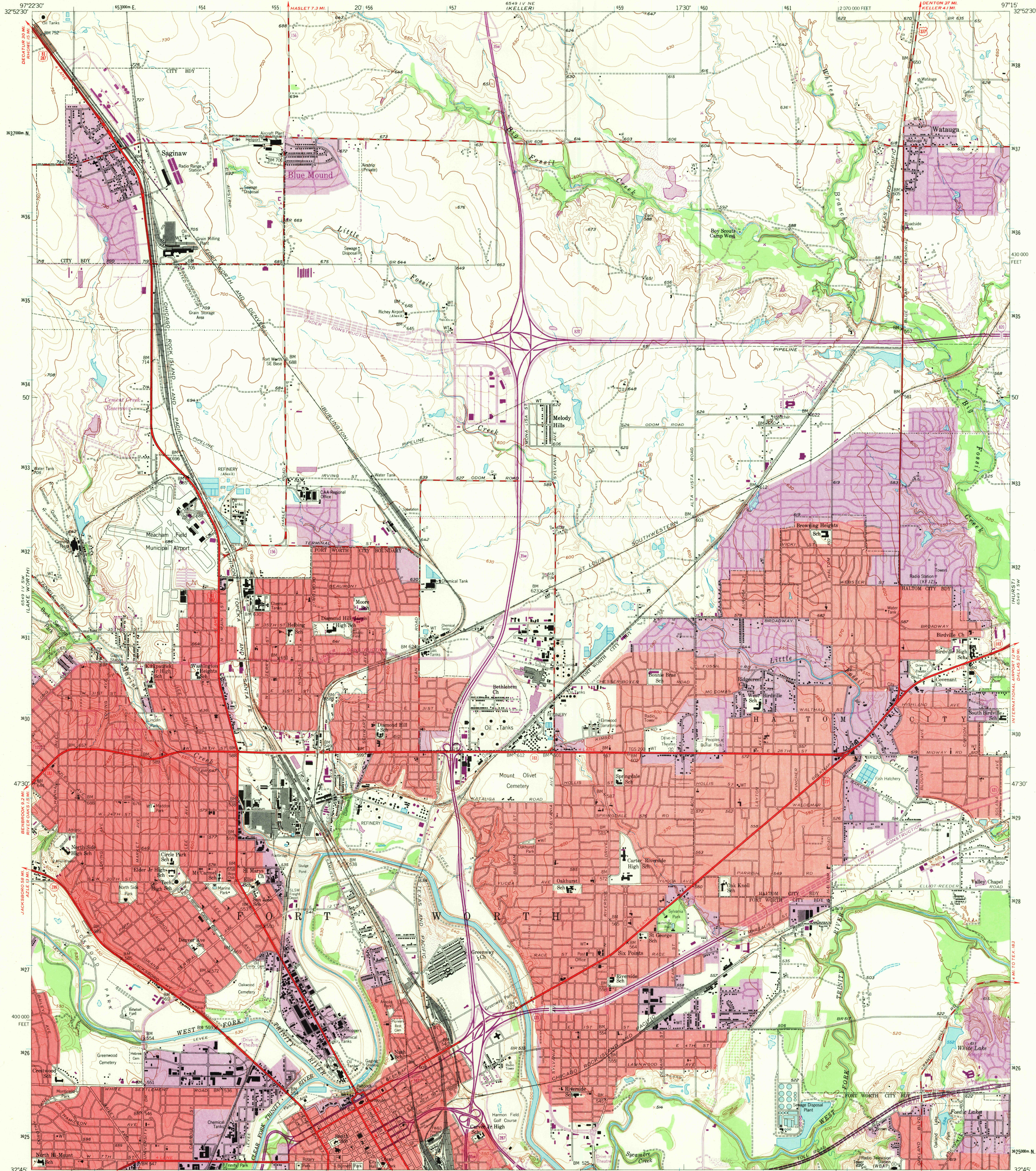
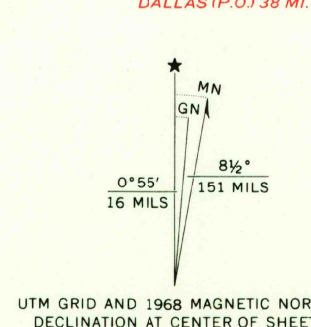


UNITED STATES  
DEPARTMENT OF THE INTERIOR  
GEOLOGICAL SURVEY

HALTOM CITY QUADRANGLE  
TEXAS-TARRANT CO.  
7.5 MINUTE SERIES (TOPOGRAPHIC)  
SE/4 HALTOM CITY 15' QUADRANGLE



Mapped, edited, and published by the Geological Survey  
Control by USGS and USC&GS  
Topography from aerial photographs by Kelsh plotter  
Aerial photographs taken 1952-1954. Field check 1955  
Polyconic projection, 1927 North American datum  
10,000-foot grid based on Texas coordinate system,  
north central zone  
1000-meter Universal Transverse Mercator grid ticks,  
zone 14, shown in blue  
Red tint indicates areas in which only landmark buildings are shown  
Revisions shown in purple compiled by the Geological Survey from  
aerial photographs taken 1968. This information not field checked  
Purple tint indicates extension of urban areas



SCALE 1:24,000  
CONTOUR INTERVAL 10 FEET  
DATUM IS MEAN SEA LEVEL  
THIS MAP COMPLIES WITH NATIONAL MAP ACCURACY STANDARDS  
FOR SALE BY U. S. GEOLOGICAL SURVEY, DENVER, COLORADO 80225, OR WASHINGTON, D. C. 20242  
A FOLDER DESCRIBING TOPOGRAPHIC MAPS AND SYMBOLS IS AVAILABLE ON REQUEST

USGS  
Historical File  
Topographic Division



ROAD CLASSIFICATION  
Heavy duty — Light duty  
Medium duty — Unimproved dirt  
Interstate Route U.S. Route State Route

U.S.G.S.  
FILE COPY  
TOPOGRAPHIC DIVISION

HALTOM CITY, TEX.  
SE/4 HALTOM CITY 15' QUADRANGLE  
N3245-W9715/7.5  
1955  
PHOTOGRAPHED 1968  
AMS 6549 IV SE-SERIES V882

3315  
SEP 11 1969