

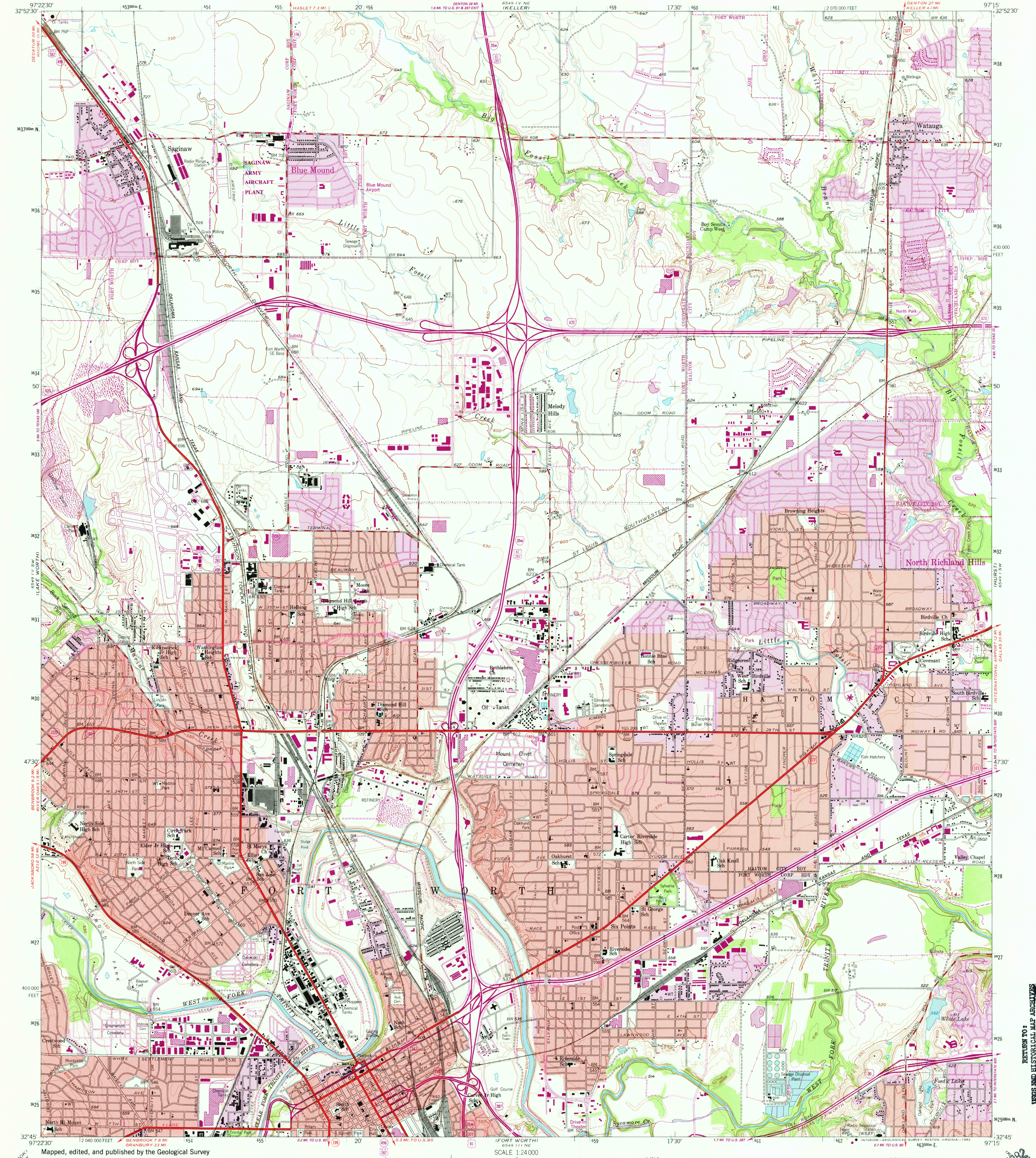
6549 1 V NE
AVONDALE

UNITED STATES
DEPARTMENT OF THE INTERIOR
GEOLOGICAL SURVEY

HALTOM CITY QUADRANGLE
TEXAS-TARRANT CO

7.5 MINUTE SERIES (TOPOGRAPHIC)
SE/4 HALTOM CITY 15' QUADRANGLE
DENTON 27 MI
KELLER 4.1 MI

6549 1 V NE
100LEEVILLE

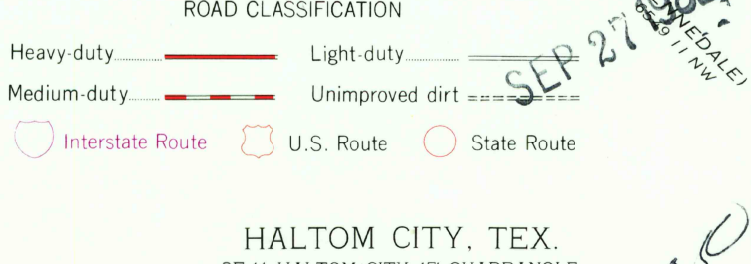
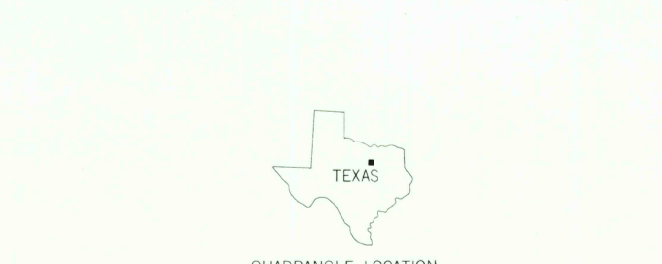
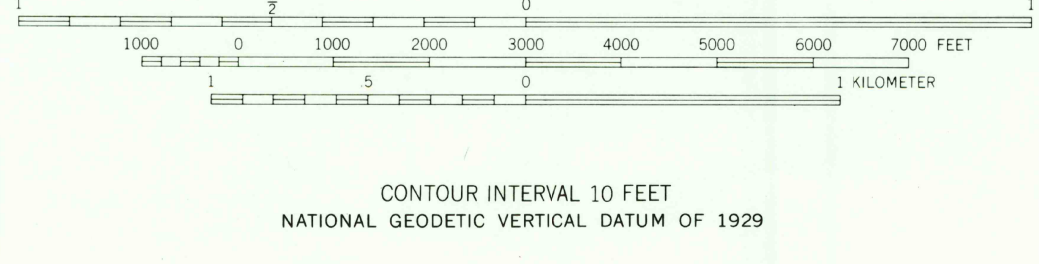
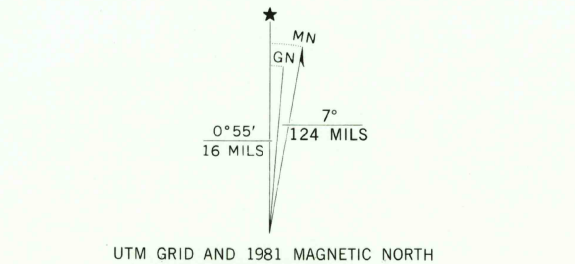


Mapped, edited, and published by the Geological Survey
Control by USGS and NOS/NOAA

Topography by photogrammetric methods from aerial photographs
taken 1952-1954. Field checked 1955

Polyconic projection. 10,000-foot grid ticks based on Texas
coordinate system, north central zone. 1000-meter Universal
Transverse Mercator grid ticks, zone 14, shown in blue
1927 North American Datum. To place on the predicted
North American Datum 1983 move the projection lines 10
meters south and 28 meters east as shown by dashed corner ticks
Red tint indicates areas in which only landmark buildings are shown
There may be private inholdings within the boundaries
of the National or State reservations shown on this map

Revisions shown in purple and woodland compiled from
aerial photographs taken 1978 and other sources. This
information not field checked. Map edited 1981
Purple tint indicates extension of urban areas



HALTOM CITY, TEX.
SE/4 HALTOM CITY 15' QUADRANGLE
N3245-W9715/7.5
1955
PHOTOGRAPHED 1981
DMA 6549 IV SE-SERIES V862

RETURN TO 3297-431
USGS AND HISTORICAL MAP ARCHIVES

SEP 27 1982

7050