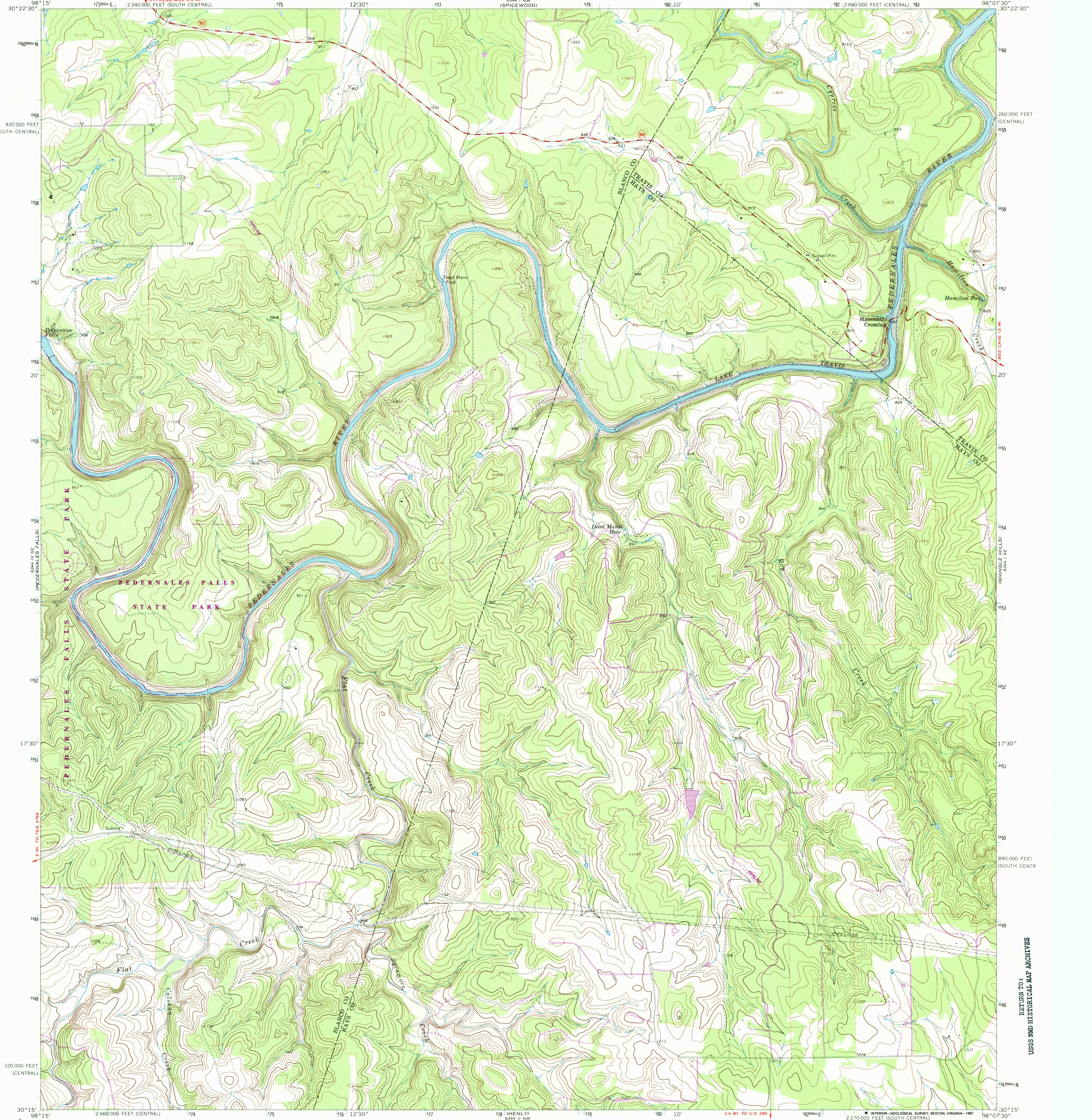


UNITED STATES  
DEPARTMENT OF THE INTERIOR  
GEOLOGICAL SURVEY

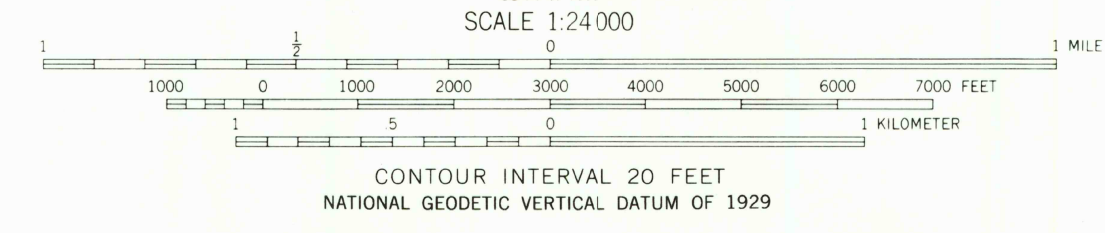
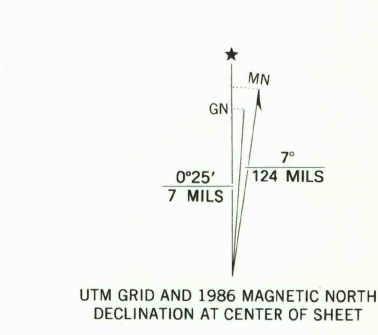
HAMMETTS CROSSING QUADRANGLE  
TEXAS  
7.5 MINUTE SERIES (TOPOGRAPHIC)

6344 1/4 NE  
W000000  
N000000

6344 1/4 E  
P000000  
(PAGE BRAND)



Mapped, edited, and published by the Geological Survey  
Control by USGS and USC&GS  
Topography by photogrammetric methods from aerial  
photographs taken 1966. Field checked 1967  
Polyconic projection. 1927 North American datum  
10,000-foot grids based on Texas coordinate system,  
central and south central zones  
1000-meter Universal Transverse Mercator grid ticks,  
zone 14, shown in blue  
Areas covered by dashed light-blue pattern  
are subject to controlled inundation  
To place on the predicted North American Datum 1983,  
move the projection lines 18 meters south and  
29 meters east as shown by dashed corner ticks



HAMMETTS CROSSING, TEX.

30098-C2-TF-024  
1967  
PHOTOREVISED 1986  
DMA 6344 1 SW-SERIES V882

RETURN TO :  
USGS NHD HISTORICAL MAP ARCHIVES