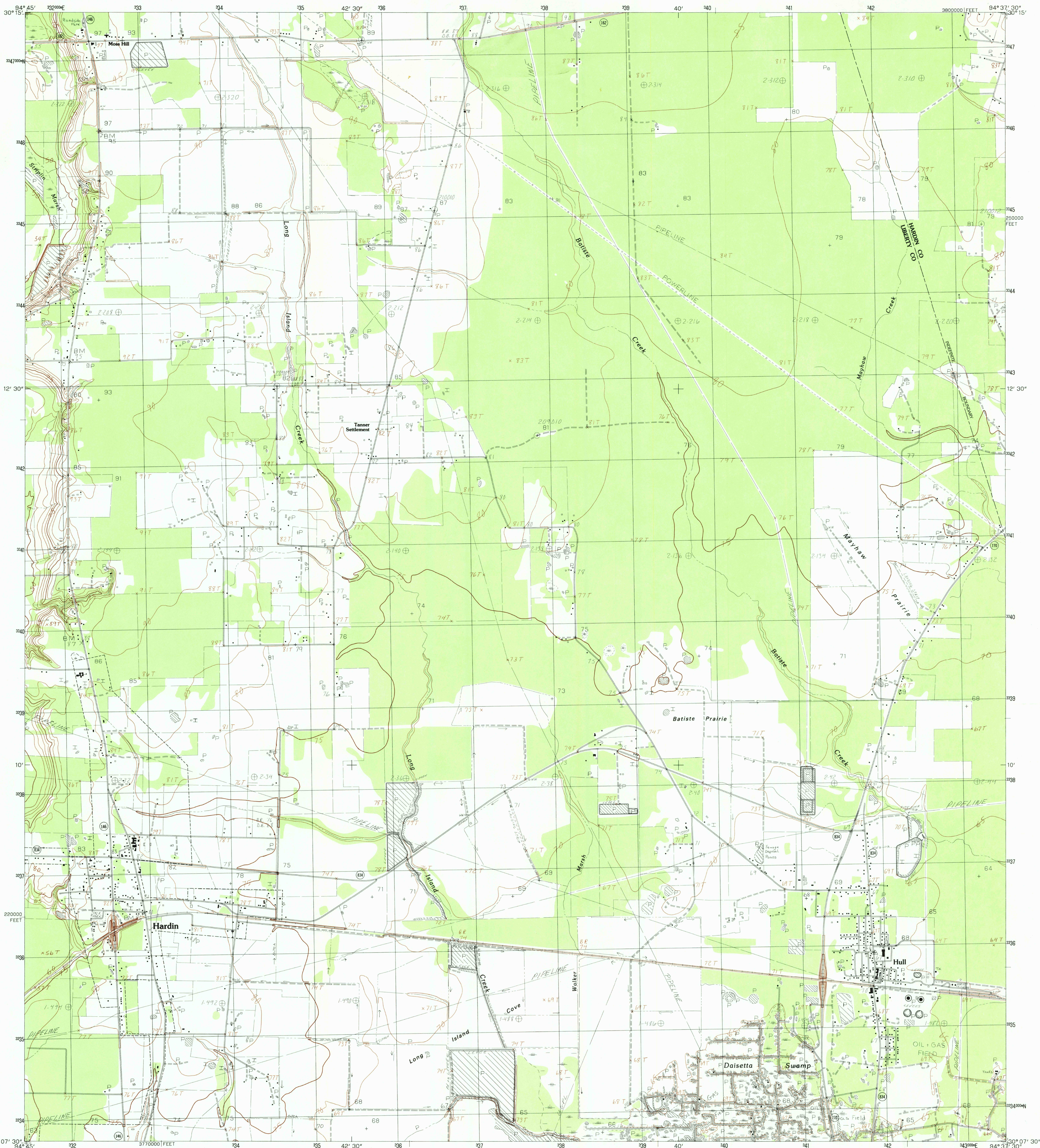


UNITED STATES
DEPARTMENT OF THE INTERIOR
GEOLOGICAL SURVEY

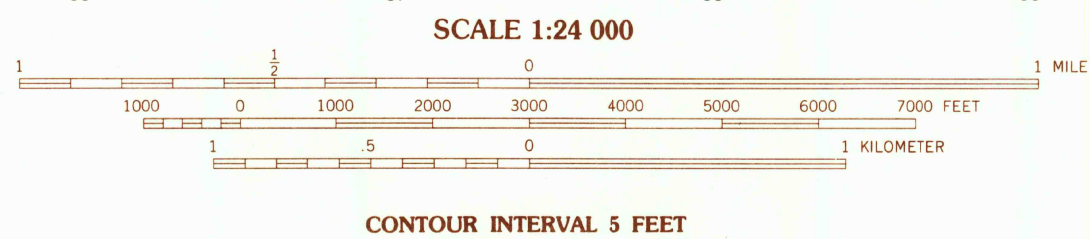
HARDIN QUADRANGLE
TEXAS
7.5 MINUTE SERIES (TOPOGRAPHIC)



PRODUCED BY THE UNITED STATES GEOLOGICAL SURVEY
CONTROL BY USGS, NOS/NOAA
FIELD CHECKED 1977 MAP EDITED 1984
PROJECTION 1984 LAMBERT CONFORMAL CONIC
GRID 100-METER UNIVERSAL TRANSVERSE MERCATOR
10,000-FOOT STATE GRID TICS TEXAS, CENTRAL ZONE
UTM GRID DECLINATION 051 WEST
1984 MAGNETIC NORTH DECLINATION 530 EAST
VERTICAL DATUM NATIONAL GEODETIC VERTICAL DATUM OF 1929
HORIZONTAL DATUM 1927 NORTH AMERICAN DATUM
To place on the predicted North American Datum of 1983, move
the projection lines as shown by dashed corner ticks
(19 meters south and 20 meters east)
There may be private inholdings within the boundaries of any
Federal and State Reservations shown on this map

PROVISIONAL MAP
Produced from original
manuscript drawings. Information
shown as of date of
field check.

3



FOR SALE BY U.S. GEOLOGICAL SURVEY, DENVER, COLORADO 80225
OR RESTON, VIRGINIA 22092

1	2	3	1 Davis Hill
4	5	2 Arizona Creek	
6	7	3 Saratoga	
		4 Capora Ridge	
		5 Thornton Gully	
		6 Liberty	
		7 Daisetta	
		8 Devers	

ADJOINING 7.5 QUADRANGLE NAMES
3094-213

ROAD LEGEND
Improved Road
Unimproved Road
Trail
Interstate Route
U.S. Route
State Route

HARDIN, TEXAS
PROVISIONAL EDITION 1984

30094-B6-TF-024

RETURN TO:
USGS AND HISTORICAL MAP ARCHIVES