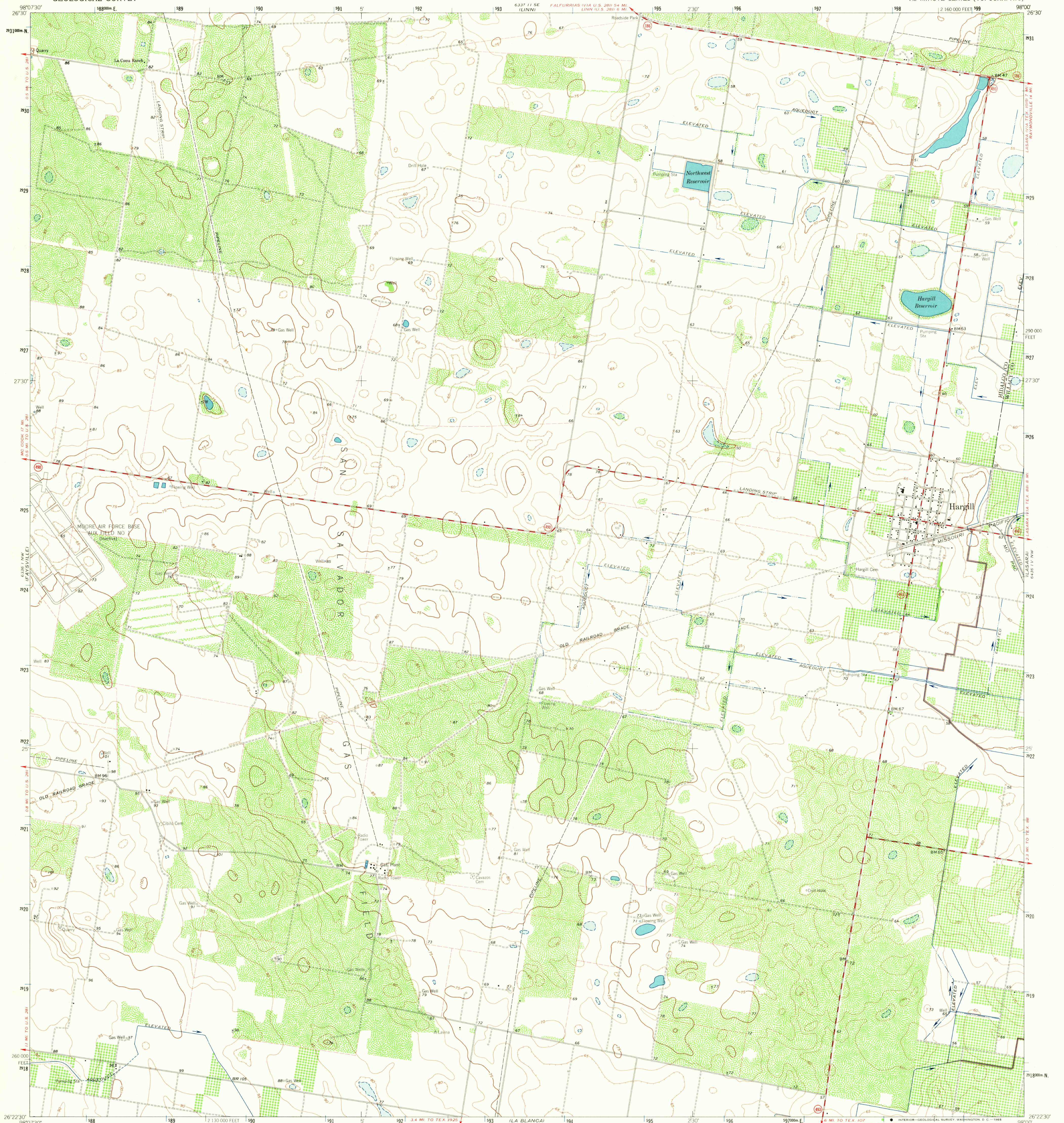


6336 11 SE  
LINN 2801 6 MI

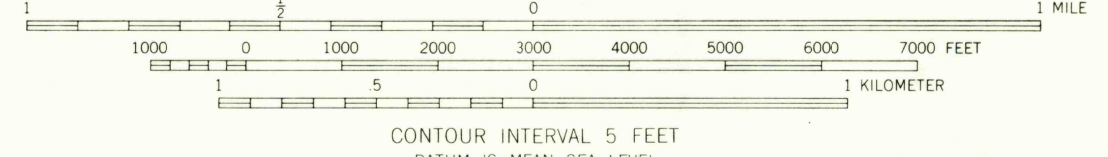
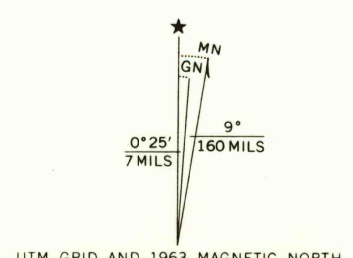
6337 11 SE  
LINN 2801 6 MI

UNITED STATES  
DEPARTMENT OF THE INTERIOR  
GEOLOGICAL SURVEY

HARGILL QUADRANGLE  
TEXAS  
7.5 MINUTE SERIES (TOPOGRAPHIC)



Mapped, edited, and published by the Geological Survey  
Control by USGS and USC&GS  
Planimetry by photogrammetric methods from aerial photographs  
taken 1961. Topography by planetable surveys 1963  
Polyconic projection. 1927 North American datum  
10,000 foot grid based on Texas coordinate system, south zone  
1000 meter Universal Transverse Mercator grid ticks,  
zone 14, shown in blue  
Fine red dashed lines indicate selected fence lines



USGS  
Historical File  
Topographic Division

ROAD CLASSIFICATION  
Medium-duty ——— Light-duty ———  
Unimproved dirt ———  
State Route ———

TEXAS  
QUADRANGLE LOCATION

U.S.G.S.  
FREE COPY  
TOPOGRAPHIC DIVISION

HARGILL, TEX.  
N2622.5-W9800/7.5  
1963  
AMS 6336 11 NE-SERIES V882

MAR 29 1965  
2615

THIS MAP COMPLIES WITH NATIONAL MAP ACCURACY STANDARDS  
FOR SALE BY U.S. GEOLOGICAL SURVEY, DENVER 25, COLORADO OR WASHINGTON 25, D.C.  
A FOLDER DESCRIBING TOPOGRAPHIC MAPS AND SYMBOLS IS AVAILABLE ON REQUEST