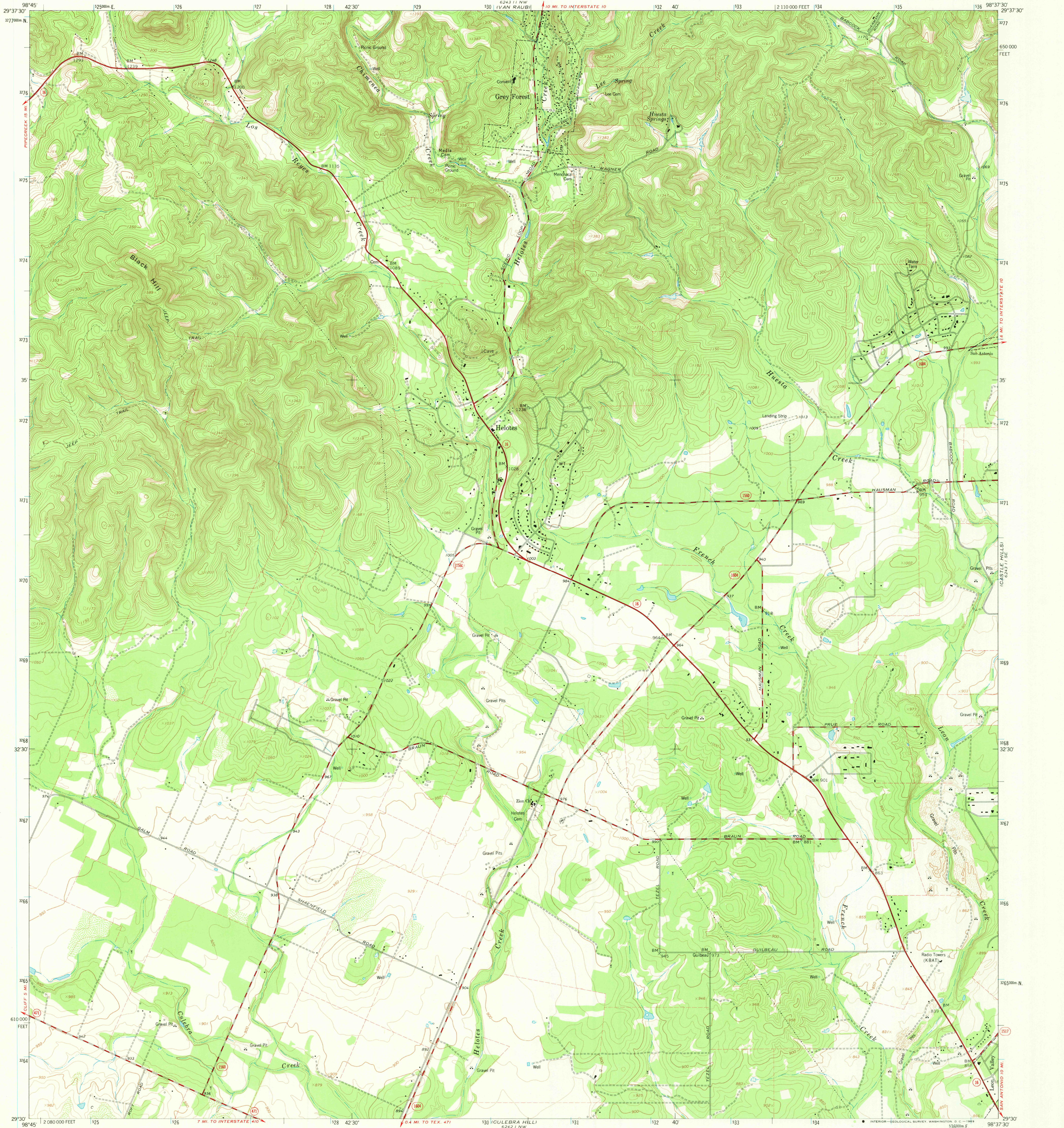


UNITED STATES
DEPARTMENT OF THE INTERIOR
GEOLOGICAL SURVEY

HELOTES QUADRANGLE
TEXAS-BEXAR CO.
7.5 MINUTE SERIES (TOPOGRAPHIC)

6243 I NE
(COMP. BULL. 5)



Mapped by the Army Map Service
Edited and published by the Geological Survey
Control by USGS, USC&GS, and USCE
Topography by photogrammetric methods from aerial photographs
taken 1952. Field checked 1953. Revised by Geological Survey
from aerial photographs taken 1966. Field checked 1966
Polyconic projection. 1927 North American datum
10,000-foot grid based on Texas coordinate system,
south central zone
1000-meter Universal Transverse Mercator grid ticks,
zone 14, shown in blue
Fine red dashed lines indicate selected fence and field lines

UTM GRID AND 1966 MAGNETIC NORTH
DECLINATION AT CENTER OF SHEET

SCALE 1:24,000
CONTOUR INTERVAL 10 FEET
DATUM IS MEAN SEA LEVEL

USGS
Historical File
Topographic Division
QUADRANGLE LOCATION

ROAD CLASSIFICATION
Heavy-duty ——— Light-duty ———
Medium-duty ——— Unimproved dirt ———
State Route (16)
U.S.G.S.
FILE COPY
TOPOGRAPHIC DIVISION
HELOTES, TEX.
N2930-W9837.5/75
1966
AMS 6243 II SW-SERIES V882

2635
JUL 1 1968