

DEPARTMENT OF THE INTERIOR  
FRANKLIN K. LANE, SECRETARY  
U. S. GEOLOGICAL SURVEY  
GEORGE OTIS SMITH, DIRECTOR

# TOPOGRAPHY

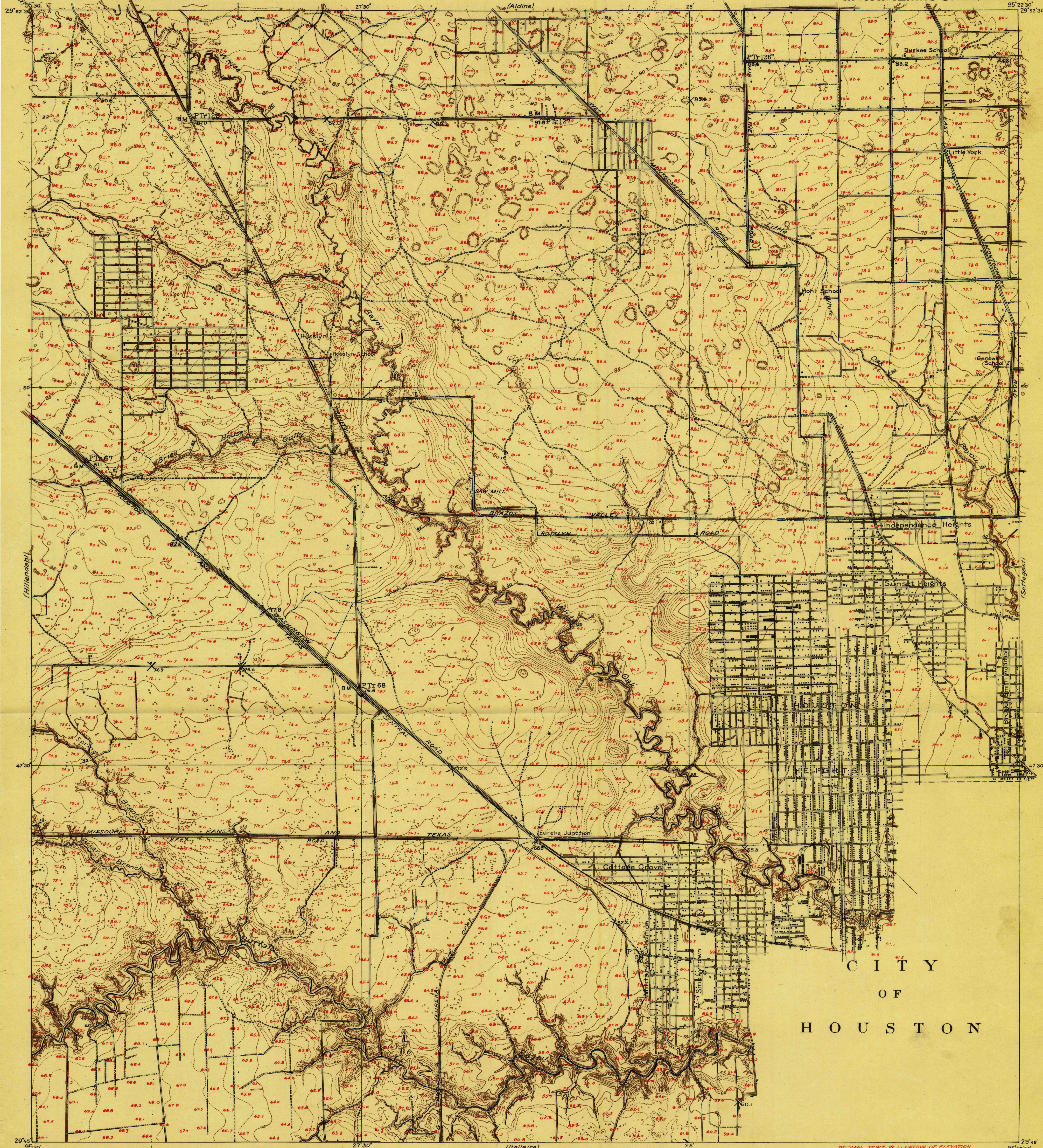
HARRIS COUNTY, TEXAS  
W. H. WARD, COUNTY JUDGE

W. H. LLOYD, J. A. SMITH, W. H. KISER, D. BARKER  
COUNTY COMMISSIONERS

INSPECTION FILES  
TOPOGRAPHY.

INSPECTION FILES  
TOPOGRAPHY.

TEXAS  
HARRIS COUNTY  
HOUSTON HEIGHTS QUADRANGLE

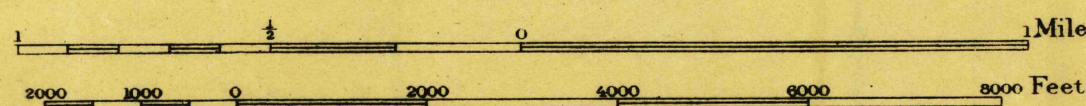


R. B. Marshall, Chief Geographer  
Sledge Tatum, Geographer in charge  
Topography by B. A. Jenkins and C. A. Stonesifer  
Control by U. S. Coast and Geodetic Survey  
E. L. McNair and R. R. Monbeck  
Surveyed in 1915

SURVEYED IN COOPERATION WITH HARRIS COUNTY, TEXAS

Other water
Jenkins

Scale 24000



Contour interval 1 foot  
Datum is mean sea level

USGS  
Historical File  
Topographic Division

TRUE NORTH  
MAGNETIC NORTH  
APPROXIMATE MEAN