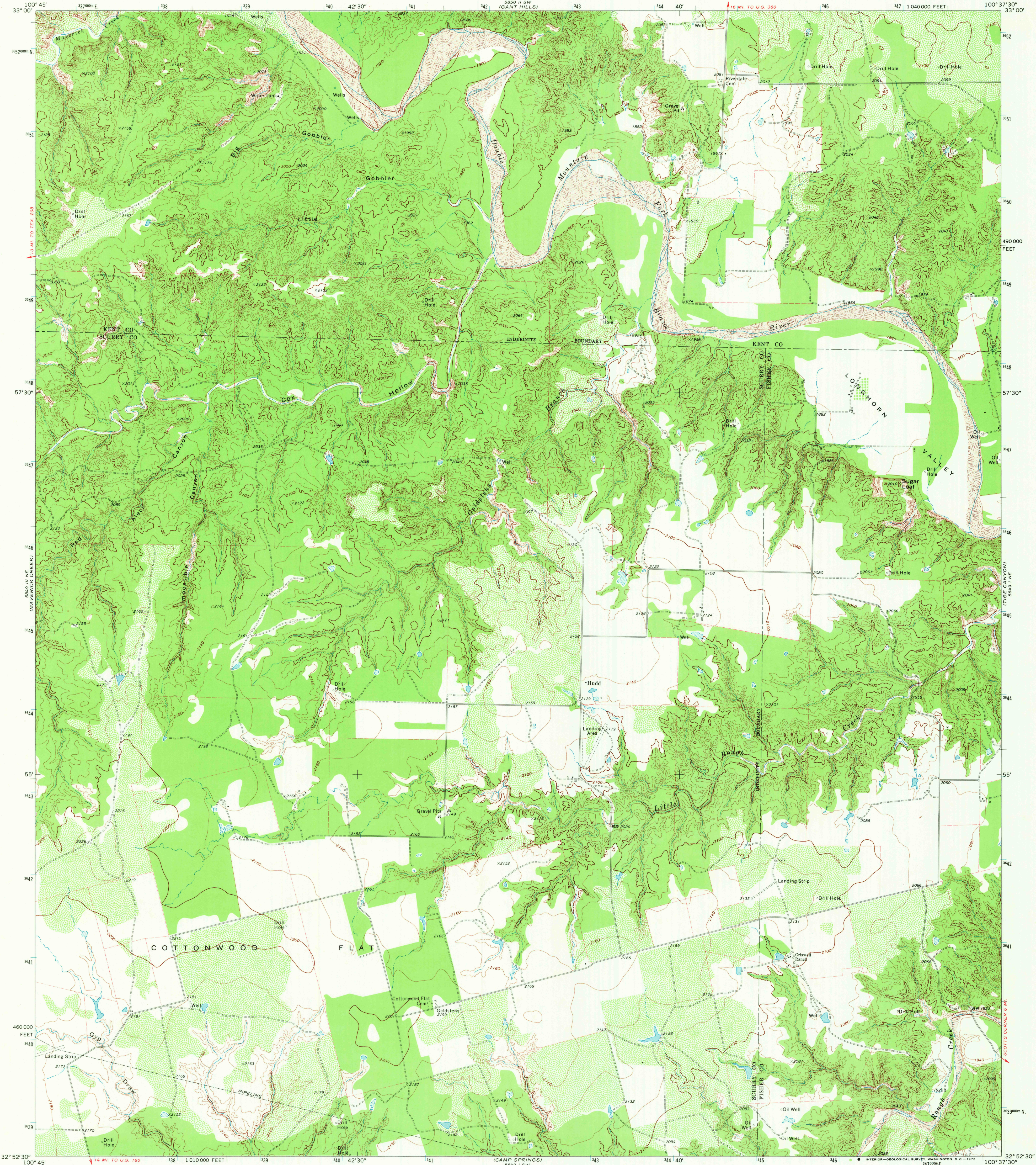
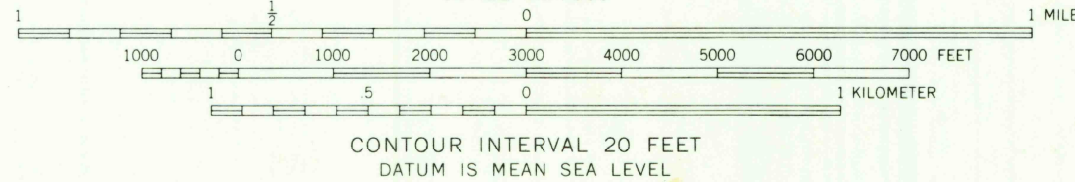
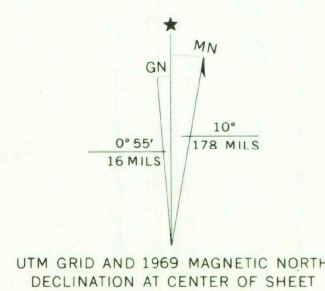


UNITED STATES
DEPARTMENT OF THE INTERIOR
GEOLOGICAL SURVEY

HUDD QUADRANGLE
TEXAS
7.5 MINUTE SERIES (TOPOGRAPHIC)
NW 1/4 CAMP SPRINGS 15' QUADRANGLE



Mapped, edited, and published by the Geological Survey
Control by USGS and USC&GS
Topography by photogrammetric methods from aerial
photographs taken 1966. Field checked 1969
Polyconic projection. 1927 North American datum
10,000-foot grid based on Texas coordinate system,
north central zone
1000-meter Universal Transverse Mercator grid ticks,
zone 14, shown in blue
Fine red dashed lines indicate selected fence lines



ROAD CLASSIFICATION
Light-duty road, all weather, improved surface
Unimproved road, fair or dry weather

USGS
HISTORICAL FILE
TOPOGRAPHIC DIVISION

HUDD, TEX.
NW 1/4 CAMP SPRINGS 15' QUADRANGLE
N3252.5-W10037.5/7.5

1969
AMS 5849 1 NW-SERIES V882

DMA
2500
Sopani
MAR 7 1973