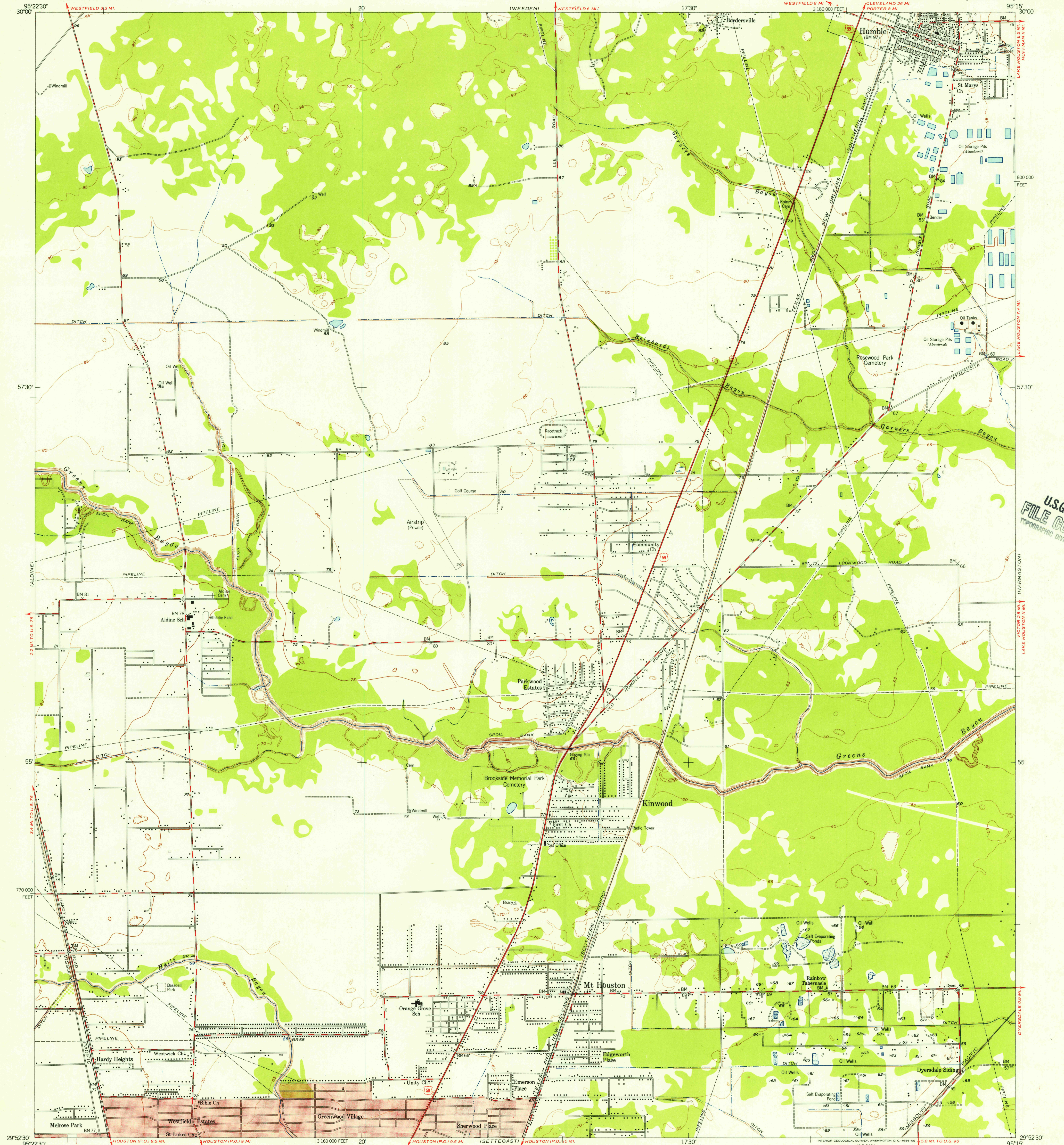


UNITED STATES
DEPARTMENT OF THE INTERIOR
GEOLOGICAL SURVEY

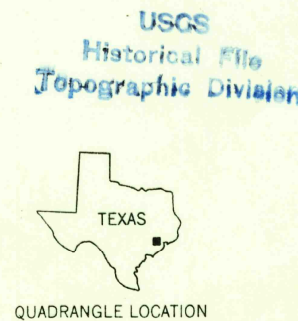
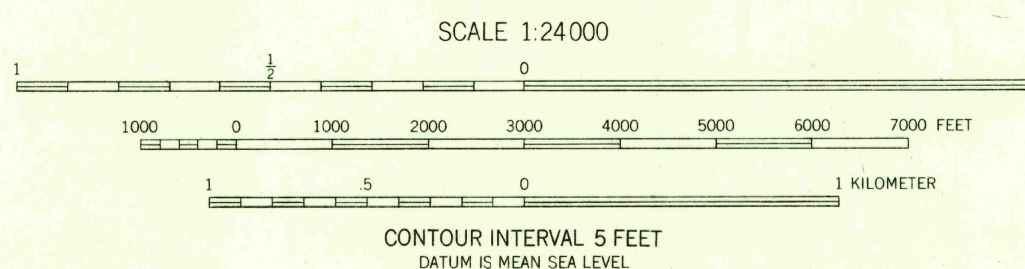
HUMBLE QUADRANGLE
TEXAS-HARRIS CO.
7.5 MINUTE SERIES (TOPOGRAPHIC)



U.S.G.S.
FILE COPY
TOPOGRAPHIC DIVISION

Mapped, edited, and published by the Geological Survey
Control by USGS, USC&GS, and USCE
Culture and drainage in part compiled from aerial photographs
taken 1953. Topography from 1943 map of U.S. Corps
of Engineers, revised by USGS planimetric surveys 1954
Humble 7.5-minute quadrangle originally mapped by USGS 1916
Polyconic projection. 1927 North American datum
10,000-foot grid based on Texas coordinate system,
south central zone
Red tint indicates areas in which only
landmark buildings are shown

TRUE NORTH
MAGNETIC NORTH
APPROXIMATE MEAN
DECLINATION, 1954



USGS
Historical File
Topographic Division
ROAD CLASSIFICATION
Heavy-duty ——— Light-duty ———
Medium-duty ——— Unimproved dirt ———
U.S. Route

HUMBLE, TEX.
N2952.5-W9515.7.5

1954

THIS MAP COMPLIES WITH NATIONAL MAP ACCURACY STANDARDS
FOR SALE BY U.S. GEOLOGICAL SURVEY, FEDERAL CENTER, DENVER 2, COLORADO OR WASHINGTON 25, D.C.
A FOLDER DESCRIBING TOPOGRAPHIC MAPS AND SYMBOLS IS AVAILABLE ON REQUEST

NOV 2 1 1956