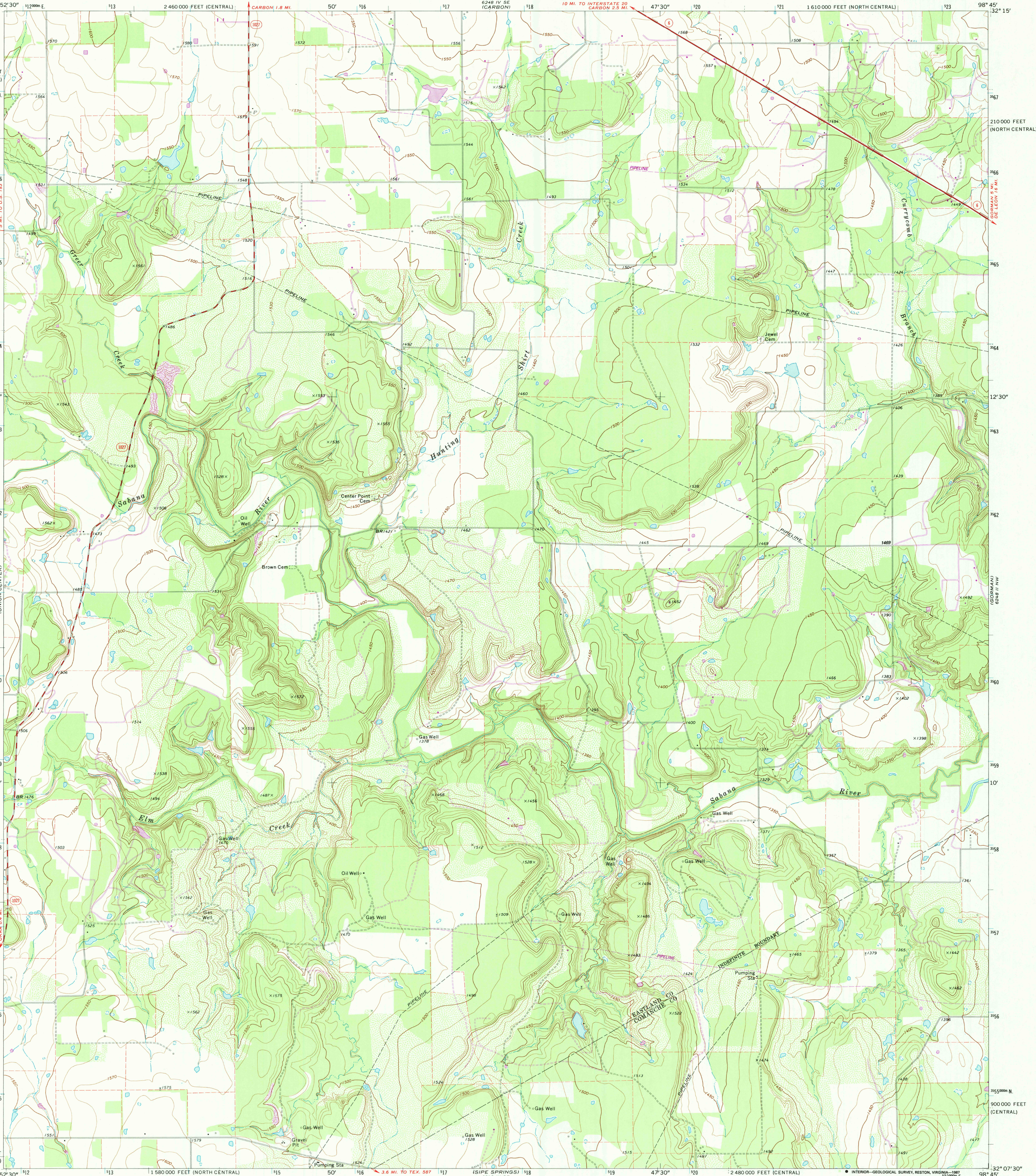


UNITED STATES
DEPARTMENT OF THE INTERIOR
GEOLOGICAL SURVEY

STATE OF TEXAS
TEXAS WATER DEVELOPMENT BOARD

HUNTING SHIRT CREEK QUADRANGLE
TEXAS
7.5 MINUTE SERIES (TOPOGRAPHIC)



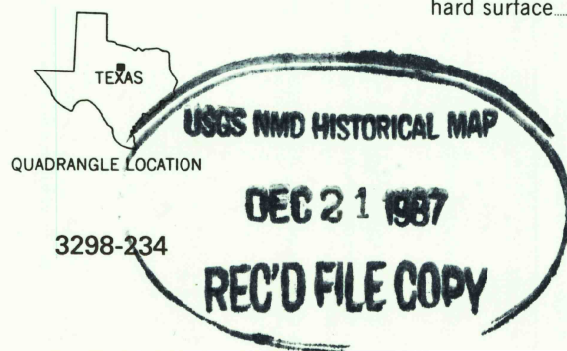
Mapped, edited, and published by the Geological Survey
Control by USGS and USC&GS
Topography by photogrammetric methods from aerial
photographs taken 1968. Field checked 1969
Polyconic projection. 1927 North American datum
10,000-foot grids based on Texas coordinate system,
north central and central zones
1000-meter Universal Transverse Mercator grid ticks,
zone 14, shown in blue
Fine red dashed lines indicate selected fence lines
To place on the predicted North American Datum 1983,
move the projection lines 11 meters south and
31 meters east as shown by dashed corner ticks
Revisions shown in purple compiled from aerial photographs taken 1983 and
other sources. This information not field checked. Map edited 1987

UTM GRID AND 1987 MAGNETIC NORTH
DECLINATION AT CENTER OF SHEET

SCALE 1:24000
CONTOUR INTERVAL 10 FEET
NATIONAL GEODETIC VERTICAL DATUM OF 1929

THIS MAP COMPLIES WITH NATIONAL MAP ACCURACY STANDARDS
FOR SALE BY U.S. GEOLOGICAL SURVEY, DENVER, COLORADO 80225, OR RESTON, VIRGINIA 22092
A FOLDER DESCRIBING TOPOGRAPHIC MAPS AND SYMBOLS IS AVAILABLE ON REQUEST

ROAD CLASSIFICATION
Primary highway, all weather, hard surface
Secondary highway, all weather, hard surface
Light-duty road, all weather, improved surface
Unimproved road, fair or dry weather
State Route



HUNTING SHIRT CREEK, TEX.
32098-B7-TF-024
1969
PHOTOREVISED 1987
DMA 6248 III NE-SERIES V882