

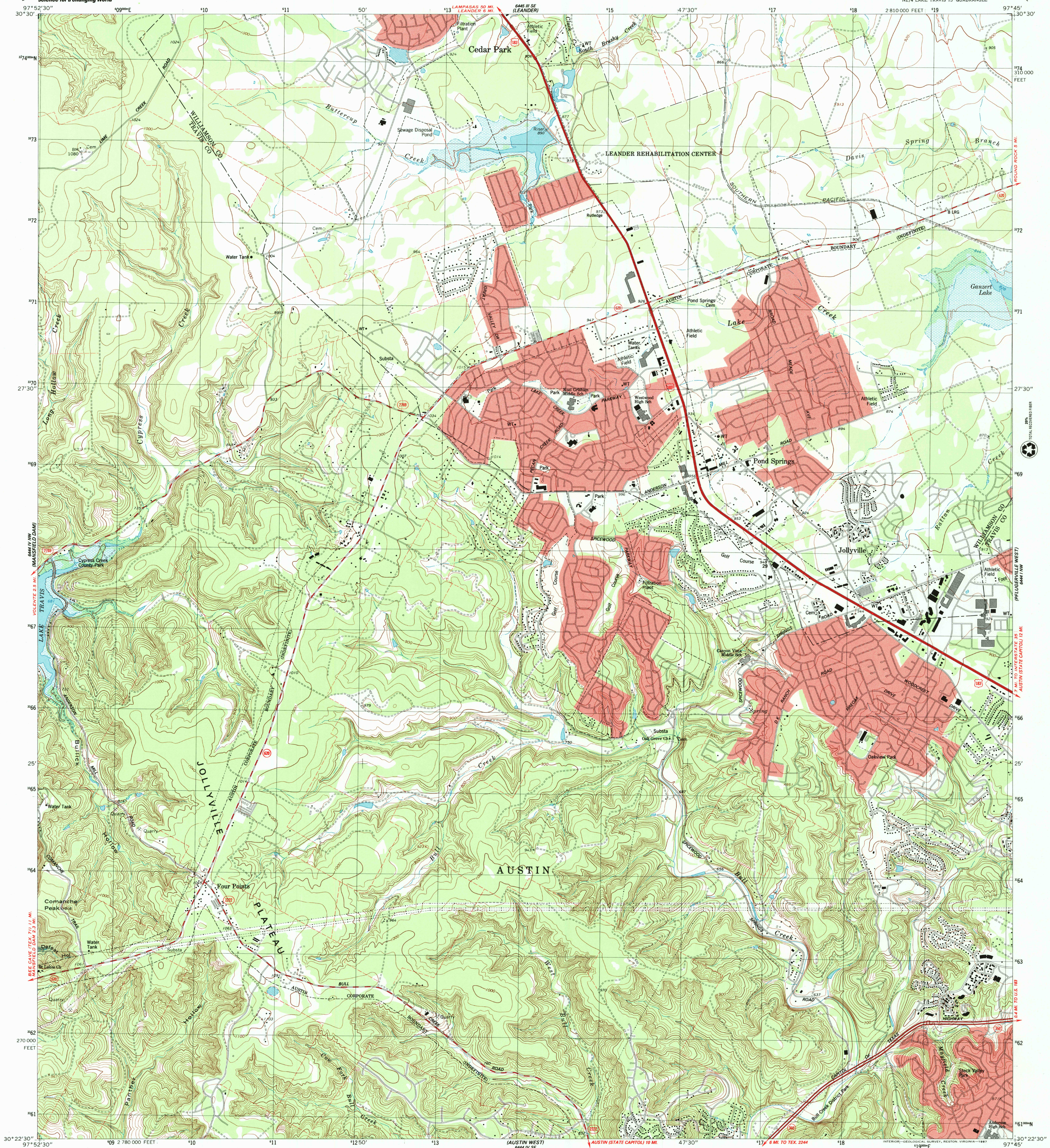
USGS
science for a changing world



U.S. DEPARTMENT OF THE INTERIOR
U.S. GEOLOGICAL SURVEY

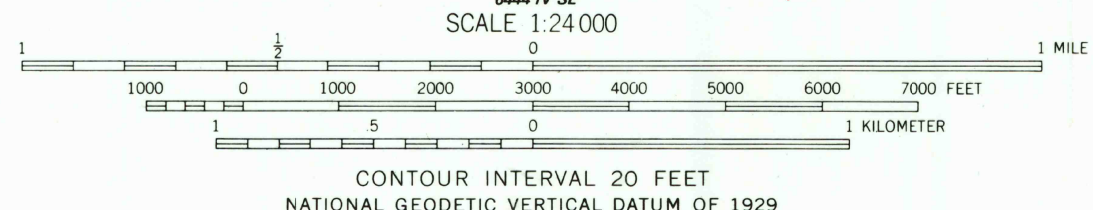
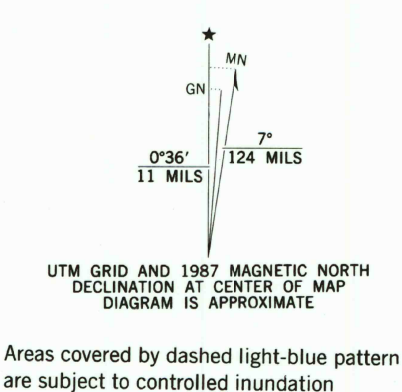
JOLLYVILLE QUADRANGLE
TEXAS
7.5 MINUTE SERIES (TOPOGRAPHIC)
NE 1/4 LAKE TRAVIS 15' QUADRANGLE

USGS
science for a changing world



USGS
science for a changing world

Mapped, edited and published by the Geological Survey
Control by USGS and NOS/NOAA
Topography by photogrammetric methods from aerial photographs
taken 1967. Field checked 1968. Revised from aerial photographs
taken 1985. Field checked 1986. Map edited 1987
Projection and 10,000-foot grid ticks: Texas
coordinate system, central zone (Lambert conformal conic)
1000-meter Universal Transverse Mercator grid, zone 14
1927 North American Datum
To place on the predicted North American Datum 1983
move the projection lines 18 meters south and
28 meters east as shown by dashed corner ticks
Fine red dashed lines indicate selected fence lines



THIS MAP COMPLIES WITH NATIONAL MAP ACCURACY STANDARDS
FOR SALE BY U.S. GEOLOGICAL SURVEY, P.O. BOX 25286, DENVER, COLORADO 80225
A FOLDER DESCRIBING TOPOGRAPHIC MAPS AND SYMBOLS IS AVAILABLE ON REQUEST



ROAD CLASSIFICATION	
Primary highway, hard surface	Light-duty road, hard or improved surface
Secondary highway, hard surface	Unimproved road
Interstate Route	U. S. Route
	State Route

RECEIVED
AUG 31 2000

JOLLYVILLE, TEX.
NE 1/4 LAKE TRAVIS 15' QUADRANGLE
30097-D7-TF-024
1987
DMA 6444 IV NE-SERIES V882

