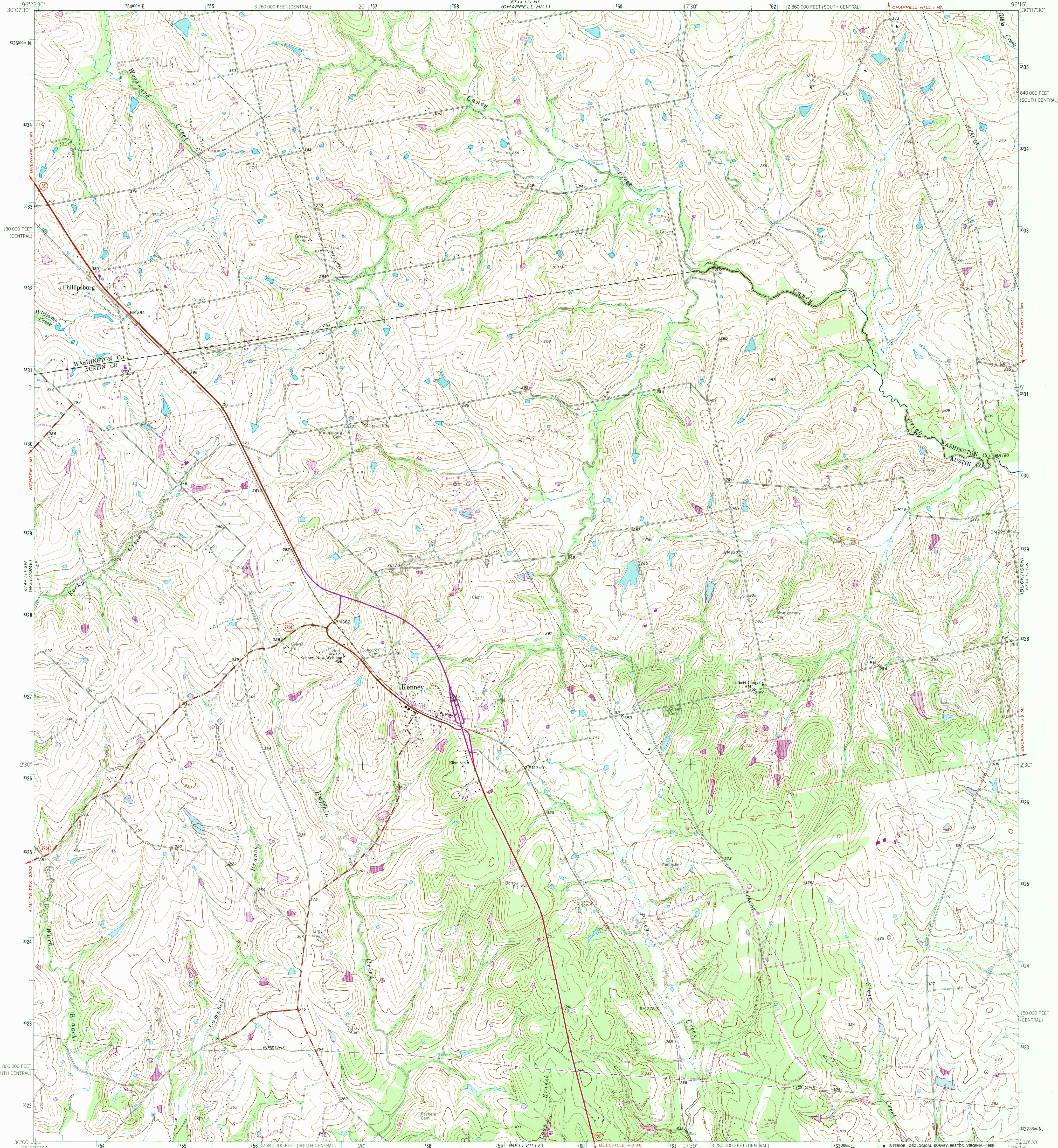


UNITED STATES
DEPARTMENT OF THE INTERIOR
GEOLOGICAL SURVEY

KENNEY QUADRANGLE
TEXAS

7.5 MINUTE SERIES (TOPOGRAPHIC)



Mapped, edited, and published by the Geological Survey

Control by USGS and USC&GS

Topography by photogrammetric methods from aerial photographs taken 1962. Field checked 1963

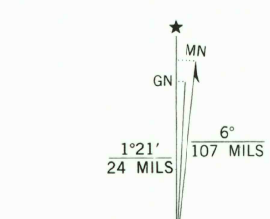
Polyconic projection. 1927 North American datum. 10,000-foot grids based on Texas coordinate system, south central and central zones.

1000-meter Universal Transverse Mercator grid ticks, zone 14, shown in blue.

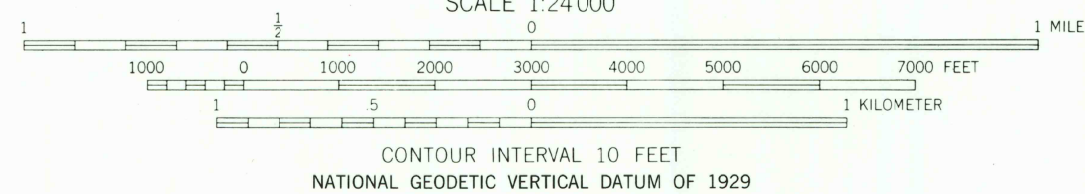
To place on the predicted North American Datum 1983 move the projection lines 19 meters south and 24 meters east as shown by dashed corner ticks.

Fine red dashed lines indicate selected fence lines.

Revisions shown in purple and woodland compiled from aerial photographs taken 1981 and other sources. This information not field checked. Map edited 1989.



UTM GRID AND 1989 MAGNETIC NORTH DECLINATION AT CENTER OF SHEET



THIS MAP COMPLIES WITH NATIONAL MAP ACCURACY STANDARDS FOR SALE BY U.S. GEOLOGICAL SURVEY. DENVER, COLORADO 80225 OR RESTON, VIRGINIA 22092. A FOLDER DESCRIBING TOPOGRAPHIC MAPS AND SYMBOLS IS AVAILABLE ON REQUEST.

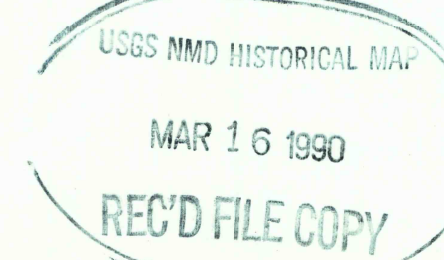
ROAD CLASSIFICATION

- Primary highway, hard surface
- Secondary highway, hard surface
- Light-duty road, hard or improved surface
- Unimproved road
- Interstate Route
- U. S. Route
- State Route



QUADRANGLE LOCATION

3096-121



KENNEY, TEX.
30096-A3-TF-024

1963
PHOTOREVISED 1989
DMA 6744 III SE - SERIES V882