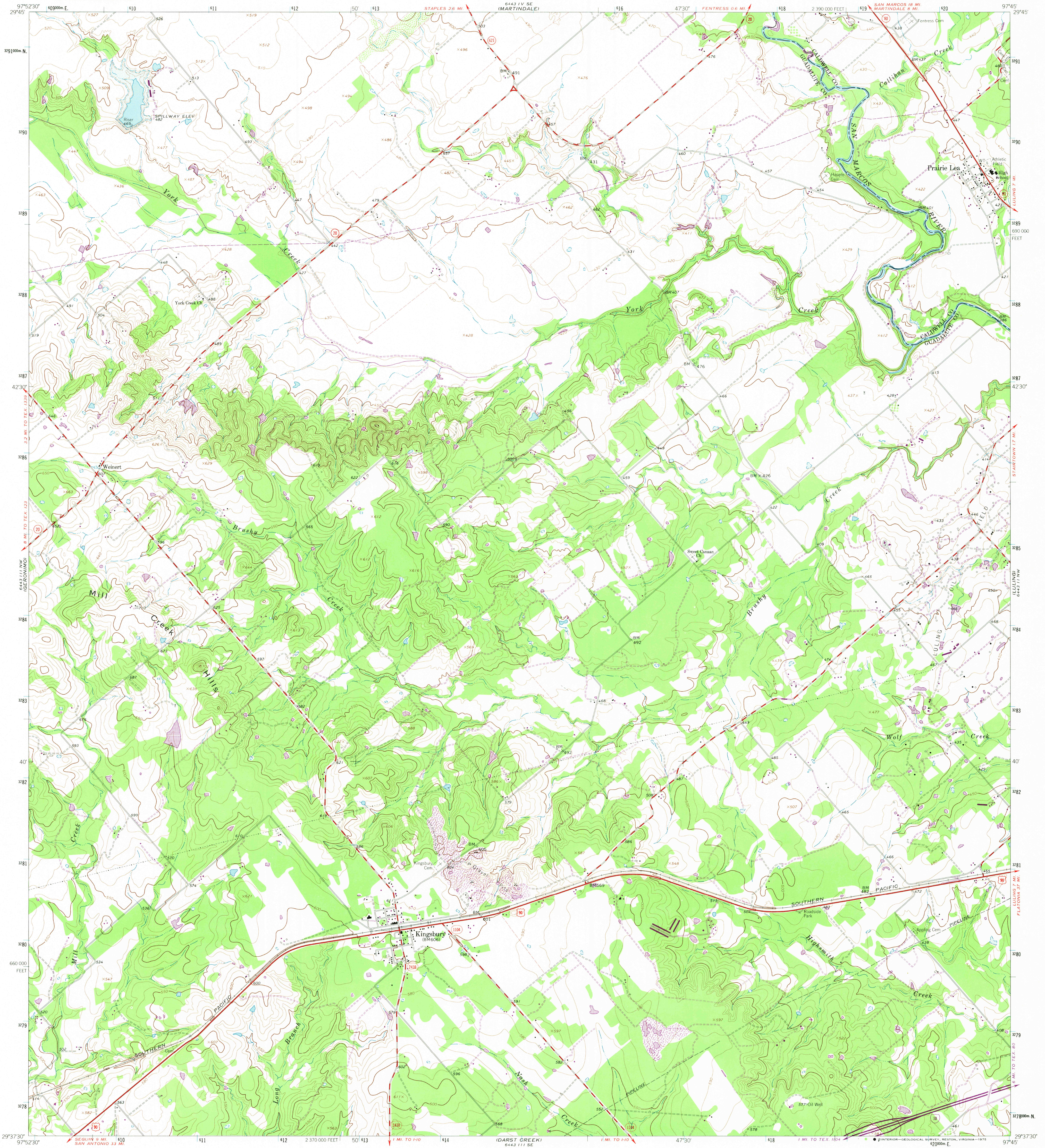


UNITED STATES  
DEPARTMENT OF THE INTERIOR  
GEOLOGICAL SURVEY

KINGSBURY QUADRANGLE  
TEXAS  
7.5 MINUTE SERIES (TOPOGRAPHIC)



Mapped by the Army Map Service  
Edited and published by the Geological Survey

Control by USGS, NOS/NOAA, and USCE

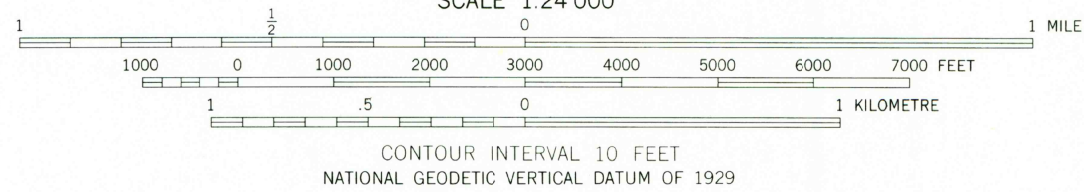
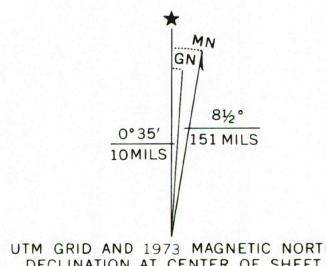
Topography by photogrammetric methods from aerial  
photographs taken 1958. Field checked by USGS 1964

Polycyclic projection. 1927 North American datum  
10,000-foot grid based on Texas coordinate system, south central zone  
1000-metre Universal Transverse Mercator grid ticks,  
zone 14, shown in blue

Fine red dashed lines indicate selected fence lines

Areas covered by dashed light blue pattern are subject  
to controlled inundation

Revisions shown in purple compiled by the Geological Survey from  
aerial photographs taken 1973. This information not field checked



ROAD CLASSIFICATION	
Primary highway, hard surface	Light-duty road, hard or improved surface
Secondary highway, hard surface	Unimproved road
Interstate Route	U.S. Route
	State Route



QUADRANGLE LOCATION

USGS  
HISTORICAL FILE  
TOPOGRAPHIC DIVISION

KINGSBURY, TEX.  
N2937 5 - W9745/7.5

1964  
PHOTOREVISED 1973  
AMS 6443 III NE-SERIES Y882

JUL 10 1975