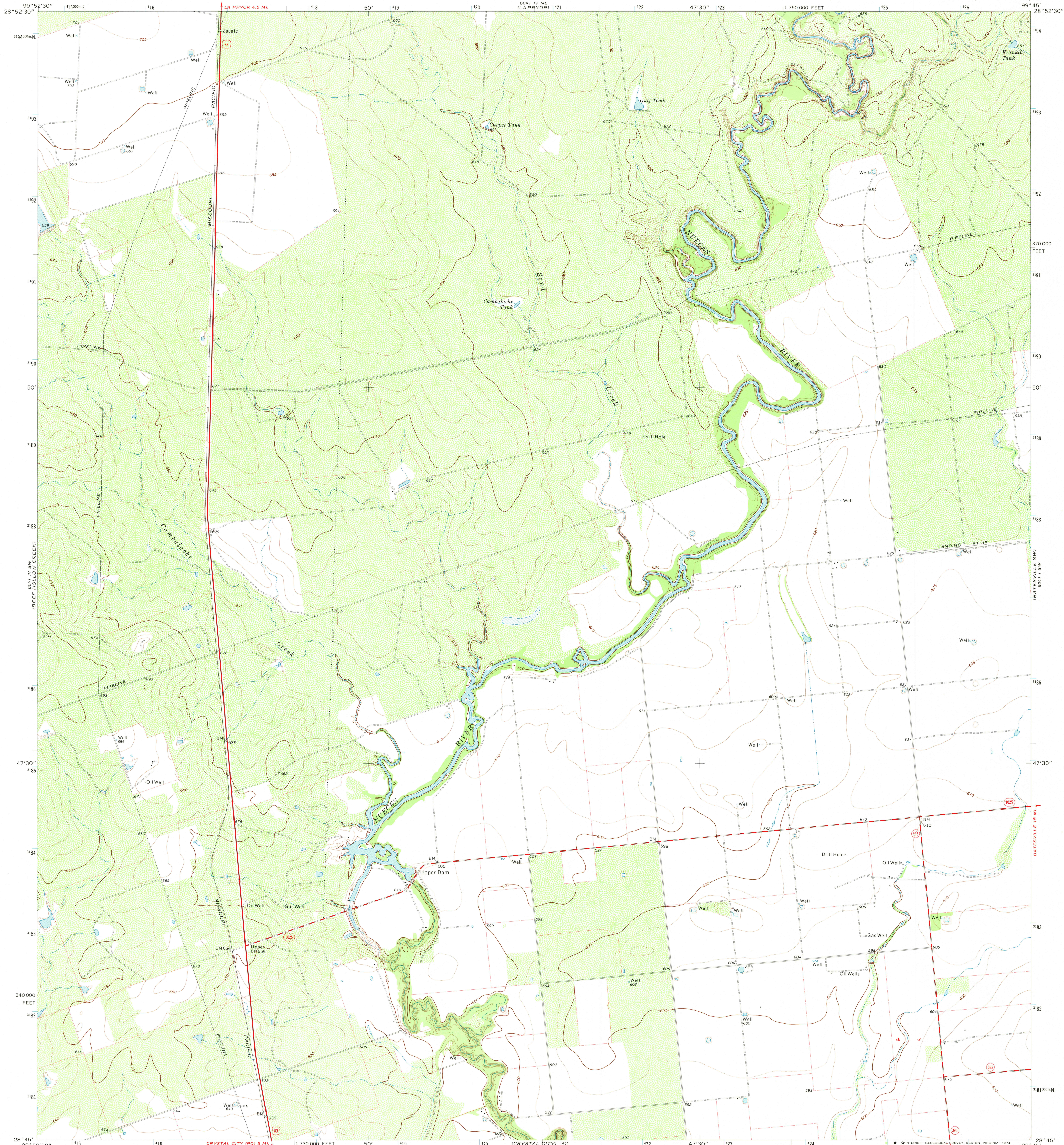
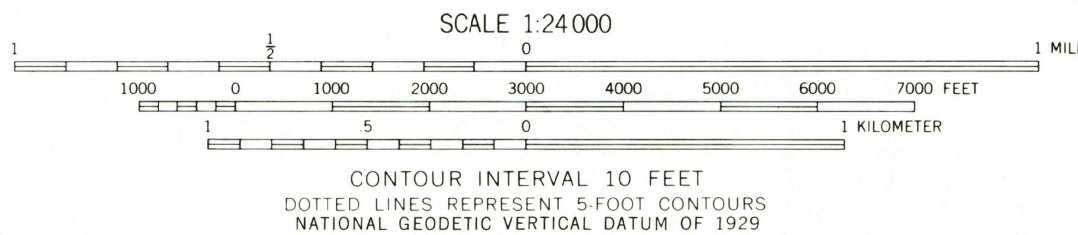
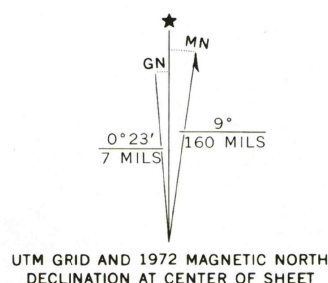


UNITED STATES
DEPARTMENT OF THE INTERIOR
GEOLOGICAL SURVEY

LA PRYOR SE QUADRANGLE
TEXAS—ZAVALA CO.
7.5 MINUTE SERIES (TOPOGRAPHIC)



Mapped, edited, and published by the Geological Survey
Control by USGS and USC&GS
Topography by photogrammetric methods from aerial
photographs taken 1971. Field checked 1972
Projection and 10,000-foot grid ticks: Texas
coordinate system, south central zone (Lambert conformal conic)
1000-meter Universal Transverse Mercator grid ticks,
zone 14, shown in blue. 1927 North American datum
Fine red dashed lines indicate selected fence lines



USGS
Historical File
Topographic Division

LA PRYOR SE, TEX.
N2845—W9945/7.5

1972

AMS 6041 IV SE—SERIES V882

DEC 11 1974

3200