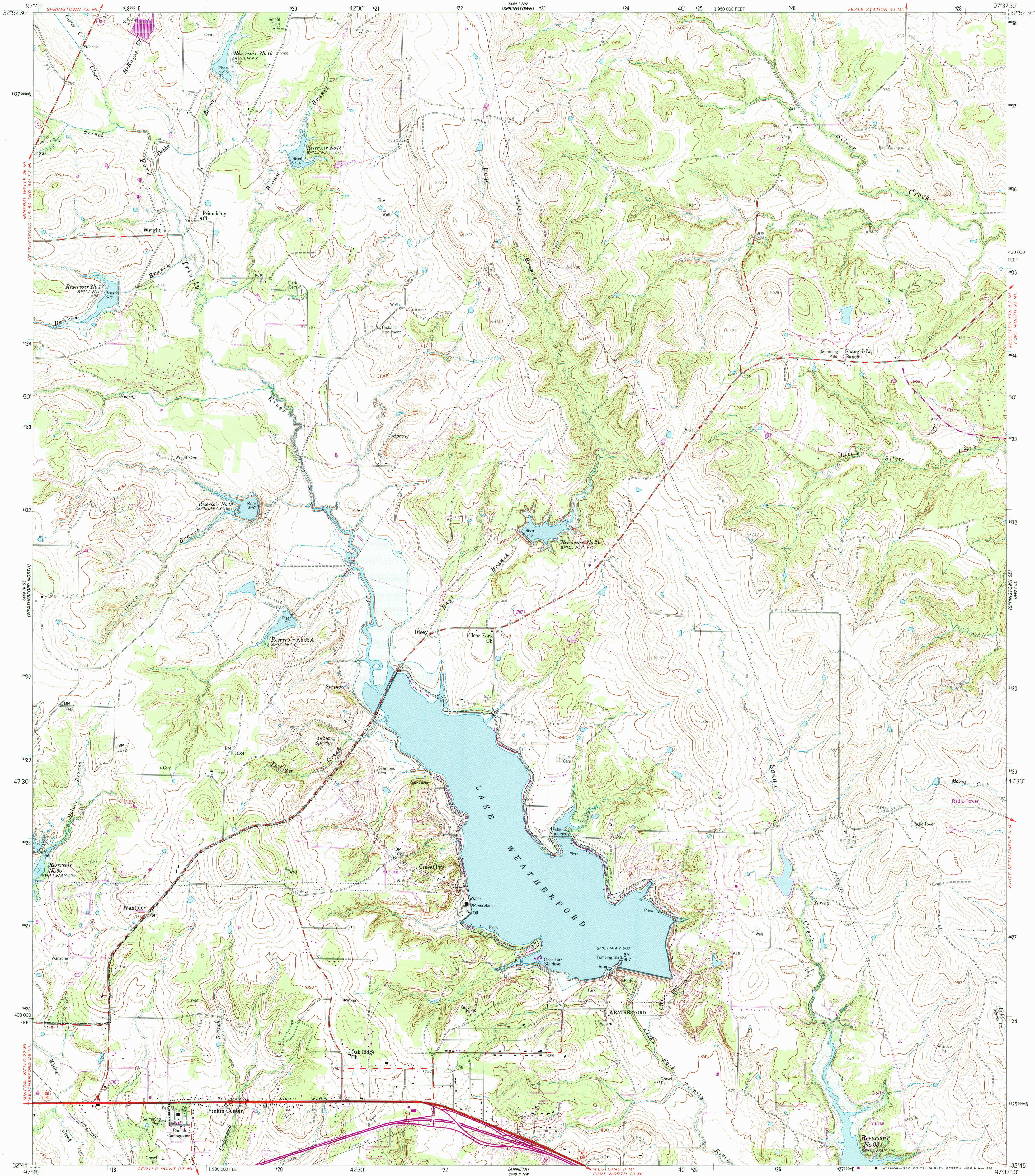


UNITED STATES
DEPARTMENT OF THE INTERIOR
GEOLOGICAL SURVEY

LAKE WEATHERFORD QUADRANGLE
TEXAS-PARKER CO.
7.5 MINUTE SERIES (TOPOGRAPHIC)



Mapped, edited, and published by the Geological Survey

Control by USGS and NOS/NOAA

Topography by photogrammetric methods from aerial photographs taken 1957. Field checked 1959

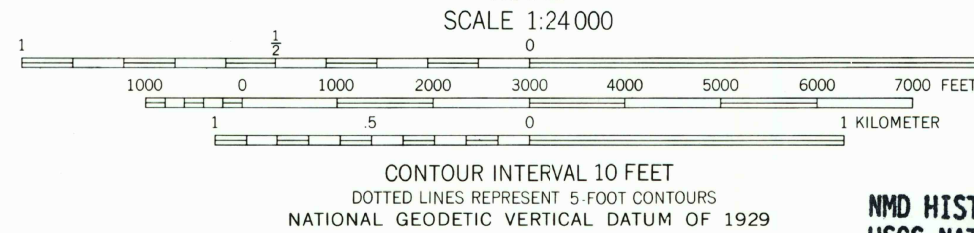
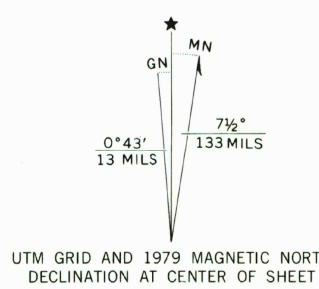
Polyconic projection. 1927 North American Datum 10,000-foot grid based on Texas coordinate system, north central zone

1000-meter Universal Transverse Mercator grid ticks, zone 14, shown in blue
The difference between 1927 North American Datum and North American Datum of 1983 (NAD 83) for 7.5 minute intersections is given in USGS Bulletin 1875. The NAD 83 is shown by dashed corner ticks

Areas covered by dashed light-blue pattern are subject to controlled inundation

Unchecked elevations are shown in brown

Revisions shown in purple and woodland compiled from aerial photographs taken 1976 and other source data
This information not field checked. Map edited 1979



THIS MAP COMPLIES WITH NATIONAL MAP ACCURACY STANDARDS
FOR SALE BY U. S. GEOLOGICAL SURVEY, DENVER, COLORADO 80225, OR RESTON, VIRGINIA 22092
A FOLDER DESCRIBING TOPOGRAPHIC MAPS AND SYMBOLS IS AVAILABLE ON REQUEST

RETURN TO:
NMD HISTORICAL MAP ARCHIVES
USGS NATIONAL CENTER, MS-522
RESTON, VA 22092

31 DEC 1991



QUADRANGLE LOCATION

3297-342

ROAD CLASSIFICATION
Primary highway, all weather, hard surface
Secondary highway, all weather, hard surface
Light-duty road, all weather, improved surface
Unimproved road, fair or dry weather
Interstate Route
U. S. Route
State Route

LAKE WEATHERFORD, TEX.

32097-G6-TF-024.

1959

PHOTOREVISED 1979
DMA 6449-1 SW-SERIES V882