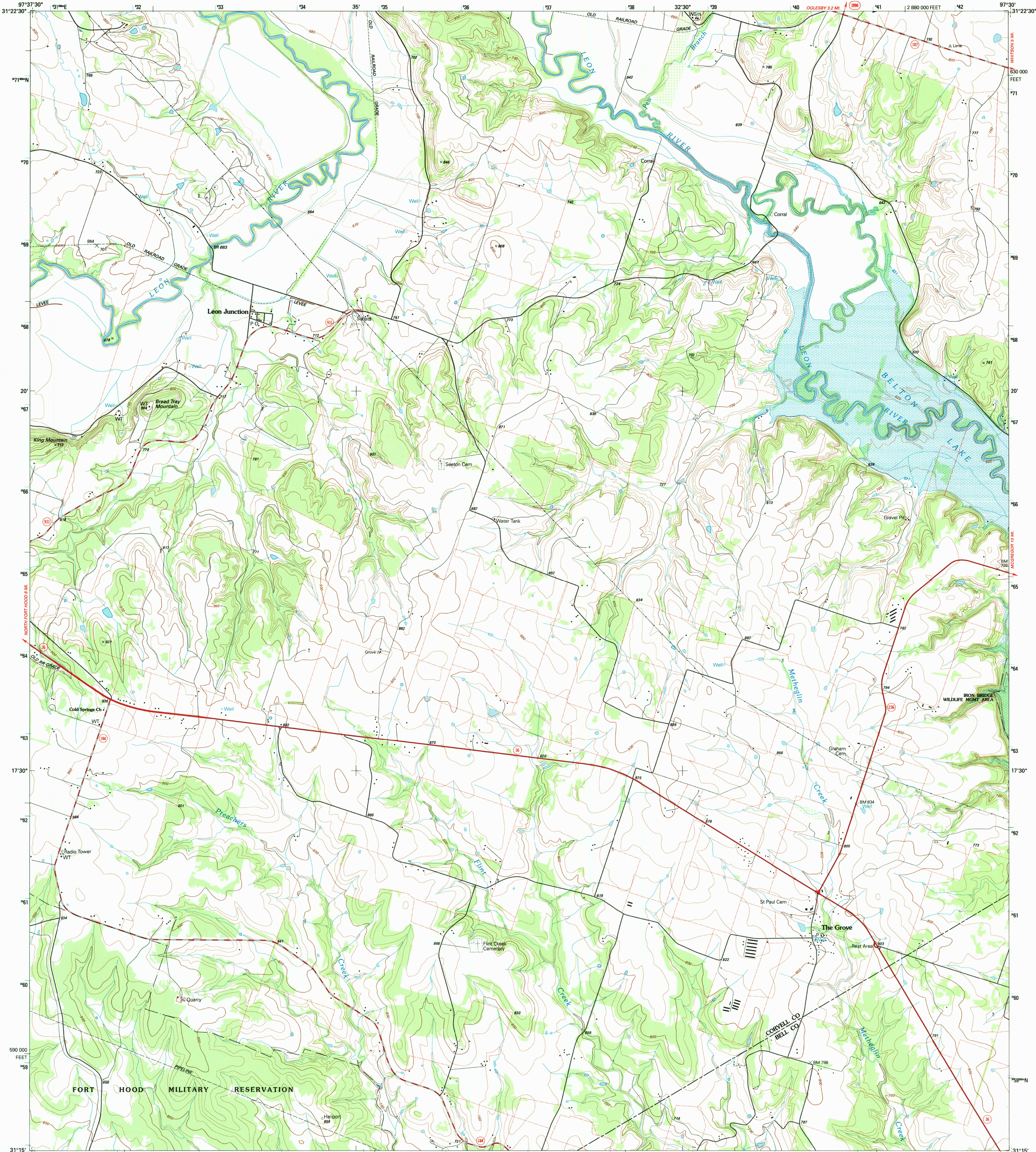
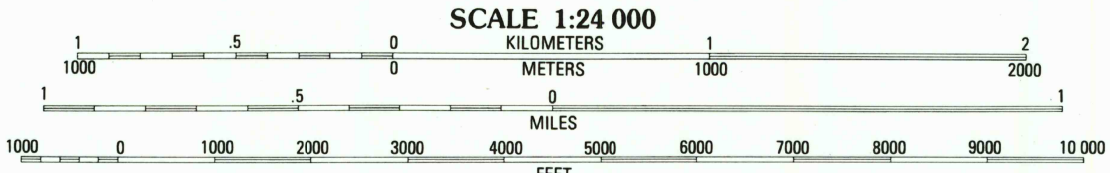
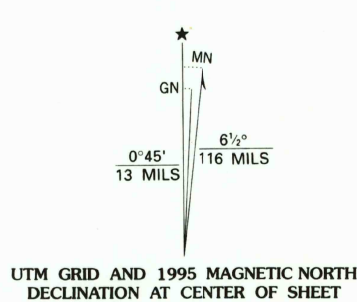


UNITED STATES  
DEPARTMENT OF THE INTERIOR  
GEOLOGICAL SURVEY

LEON JUNCTION QUADRANGLE  
TEXAS  
7.5-MINUTE SERIES (TOPOGRAPHIC)



Produced by the United States Geological Survey  
Control by USGS and NOS/NOAA  
Compiled from aerial photographs taken 1990 and other sources  
Field checked 1991. Map edited 1995  
North American Datum of 1927 (NAD 27). Projection and  
10 000-foot ticks. Texas Coordinate System, central zone  
(Lambert Conformal Conic)  
Blue 1000-meter Universal Transverse Mercator ticks, zone 14  
North American Datum of 1983 (NAD 83) is shown by dashed  
corner ticks. The values of the shift between NAD 27 and NAD 83  
for 7.5-minute intersections are obtainable from National Geodetic  
Survey NADCON software  
There may be private inholdings within the boundaries of the  
National or State reservations shown on this map  
Fine red dashed lines indicate selected fence and field lines where  
generally visible on aerial photographs. This information is  
unchecked  
Areas covered by light-blue pattern are subject to controlled inundation



CONTOUR INTERVAL 20 FEET  
SUPPLEMENTARY CONTOUR INTERVAL 10 FEET  
NATIONAL GEODETTIC VERTICAL DATUM OF 1929  
TO CONVERT FEET TO METERS MULTIPLY BY 0.3048  
TO CONVERT METERS TO FEET MULTIPLY BY 3.2808

THIS MAP COMPLIES WITH NATIONAL MAP ACCURACY STANDARDS  
FOR SALE BY U.S. GEOLOGICAL SURVEY  
DENVER, COLORADO 80225 OR RESTON, VIRGINIA 22092  
A FOLDER DESCRIBING TOPOGRAPHIC MAPS AND SYMBOLS IS AVAILABLE ON REQUEST

ROAD CLASSIFICATION

Primary highway, hard surface . . . . . Light-duty road, hard or improved surface . . . . .

Secondary highway, hard surface . . . . . Unimproved road . . . . .

Interstate Route U. S. Route State Route

QUADRANGLE LOCATION

1	2	3	1	Gatesville East
2	3	4	2	Oglesby
3	4	5	3	McGregor
4	5	6	4	North Fort Hood
5	6	7	5	Eagle Springs
6	7	8	6	Post Oak Mountain
7	8	9	7	Blair
8	9	10	8	Moffat

ADJOINING 7.5' QUADRANGLE NAMES

3197-241

USGS 1000 HISTORICAL MAP ARCHIVES  
JUN 16 1995  
REC'D FILE COPY

LEON JUNCTION, TX  
31097-C5-TF-024  
1995  
DMA 6446 I SE-SERIES V882