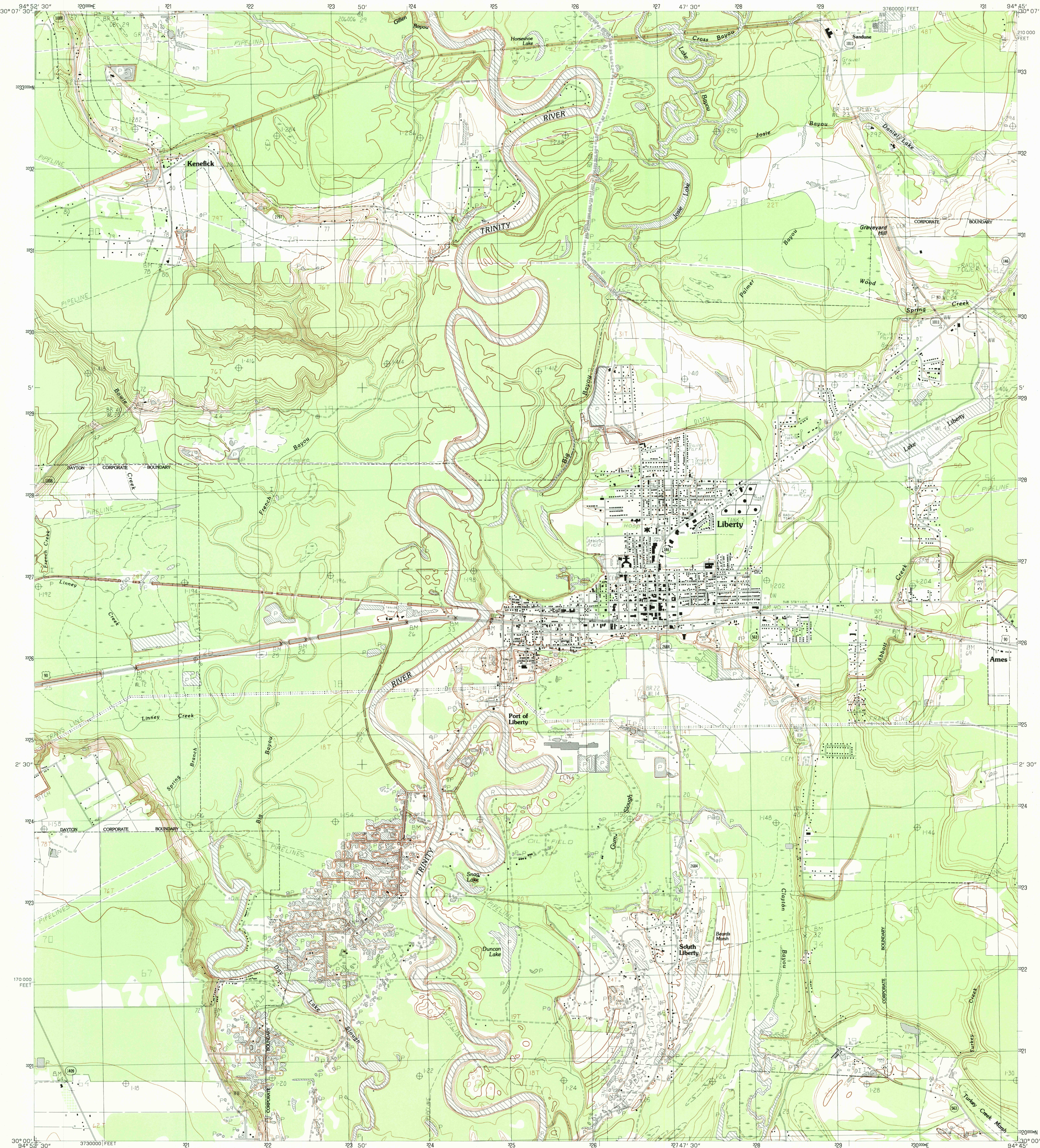


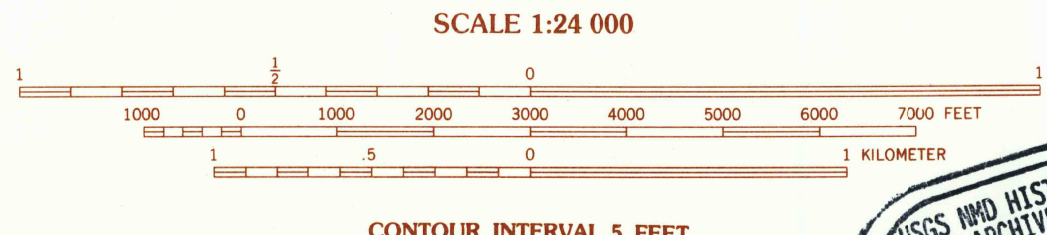
UNITED STATES  
DEPARTMENT OF THE INTERIOR  
GEOLOGICAL SURVEY

LIBERTY QUADRANGLE  
TEXAS-LIBERTY CO.  
7.5 MINUTE SERIES (TOPOGRAPHIC)



PRODUCED BY THE UNITED STATES GEOLOGICAL SURVEY  
CONTROL BY USGS, NOS/NOAA  
COMPILED FROM AERIAL PHOTOGRAPHS TAKEN 1976  
FIELD CHECKED 1977 MAP EDITED 1984  
PROJECTION LAMBERT CONFORMAL CONIC  
GRID: 1000-METER UNIVERSAL TRANSVERSE MERCATOR ZONE 15  
10,000-FOOT STATE GRID TICKS TEXAS, CENTRAL ZONE  
UTM GRID DECLINATION 9°54' WEST  
1984 MAGNETIC NORTH DECLINATION 5°30' EAST  
VERTICAL DATUM NATIONAL GEODETIC VERTICAL DATUM OF 1929  
HORIZONTAL DATUM 1927 NORTH AMERICAN DATUM  
To place on the predicted North American Datum of 1983, move  
the projection lines as shown by dashed corner ticks  
(19 meters north and 20 meters east)  
There may be private inholdings within the boundaries of any  
Federal and State Reservations shown on this map

**PROVISIONAL MAP**  
Produced from original  
manuscript drawings. Information  
shown as of date of  
field check.



USGS AND HISTORICAL  
MAP ARCHIVES  
SEP 08 1995  
REC'D FILE COPY

FOR SALE BY U.S. GEOLOGICAL SURVEY, DENVER, COLORADO 80225  
OR RESTON, VIRGINIA 22092



1	2	3	1 Simmons Bottom
4	5	2 Capers Ridge	
6	7	3 Hardin	
		4 Dayton	
		5 Dalletta	
		6 Shocks	
		7 Moss Bluff	
		8 Shiloh	

ADJOINING 7.5 QUADRANGLE NAMES  
3094-221

**ROAD LEGEND**  
Improved Road .....  
Unimproved Road .....  
Trail .....  
Interstate Route .....  
U.S. Route .....  
State Route .....

**LIBERTY, TEXAS**  
PROVISIONAL EDITION 1984

30094-A7-TF-024

