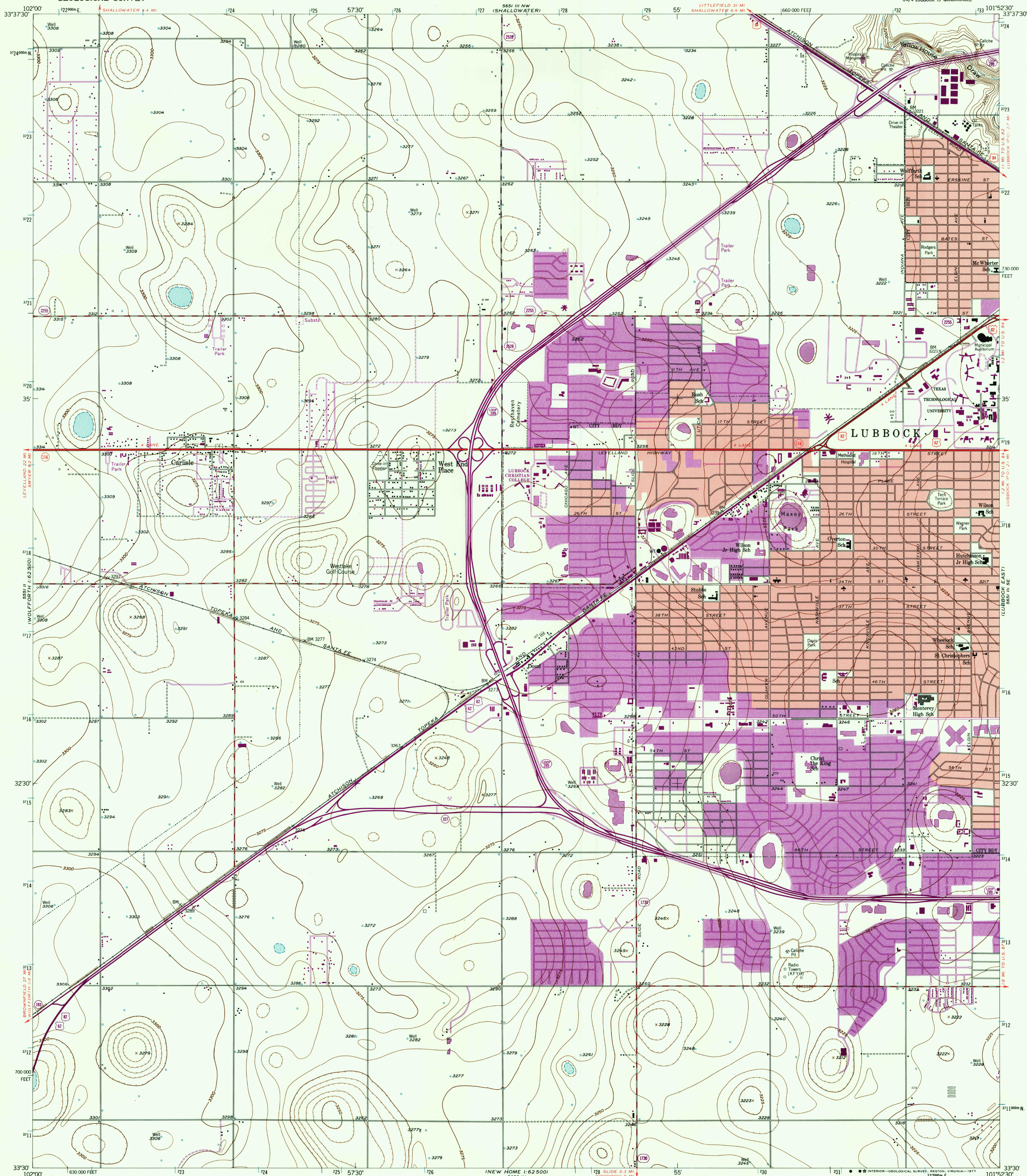
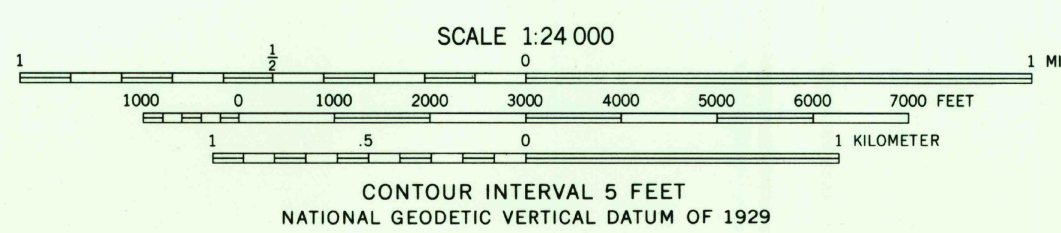
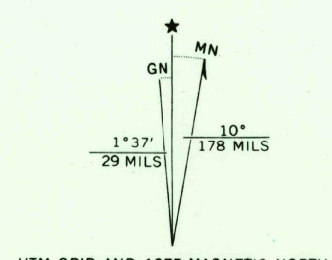


UNITED STATES
DEPARTMENT OF THE INTERIOR
GEOLOGICAL SURVEY

LUBBOCK WEST QUADRANGLE
TEXAS-LUBBOCK CO.
7.5 MINUTE SERIES (TOPOGRAPHIC)
SW/4 LUBBOCK 15 QUADRANGLE



Mapped, edited, and published by the Geological Survey
Control by USGS and NOS/NOMA
Culture and drainage in part compiled from aerial photographs
taken 1954. Topography by planetable surveys 1957
Polyconic projection. 1927 North American datum
10,000-foot grid based on Texas coordinate system,
north central zone
1000-meter Universal Transverse Mercator grid ticks,
zone 14, shown in blue
Red tint indicates areas in which only
landmark buildings are shown
Revisions shown in purple compiled from aerial photographs
taken 1970 and 1975. This information not field checked
Purple tint indicates extension of urban areas



THIS MAP COMPLIES WITH NATIONAL MAP ACCURACY STANDARDS
FOR SALE BY U. S. GEOLOGICAL SURVEY, DENVER, COLORADO 80225, OR RESTON, VIRGINIA 22092
A FOLDER DESCRIBING TOPOGRAPHIC MAPS AND SYMBOLS IS AVAILABLE ON REQUEST



ROAD CLASSIFICATION
Primary highway, hard surface
Secondary highway, hard surface
Interstate Route
U. S. Route
State Route
Light-duty road, hard or improved surface
Unimproved road
MAR 03 1977

USGS
Historical File
Topographic Division

LUBBOCK WEST, TEX.
SW/4 LUBBOCK 15 QUADRANGLE
N3330-W10152.5/7.5
1957
PHOTOREVISED 1970 AND 1975
AMS 5651 III SW-SERIES V882