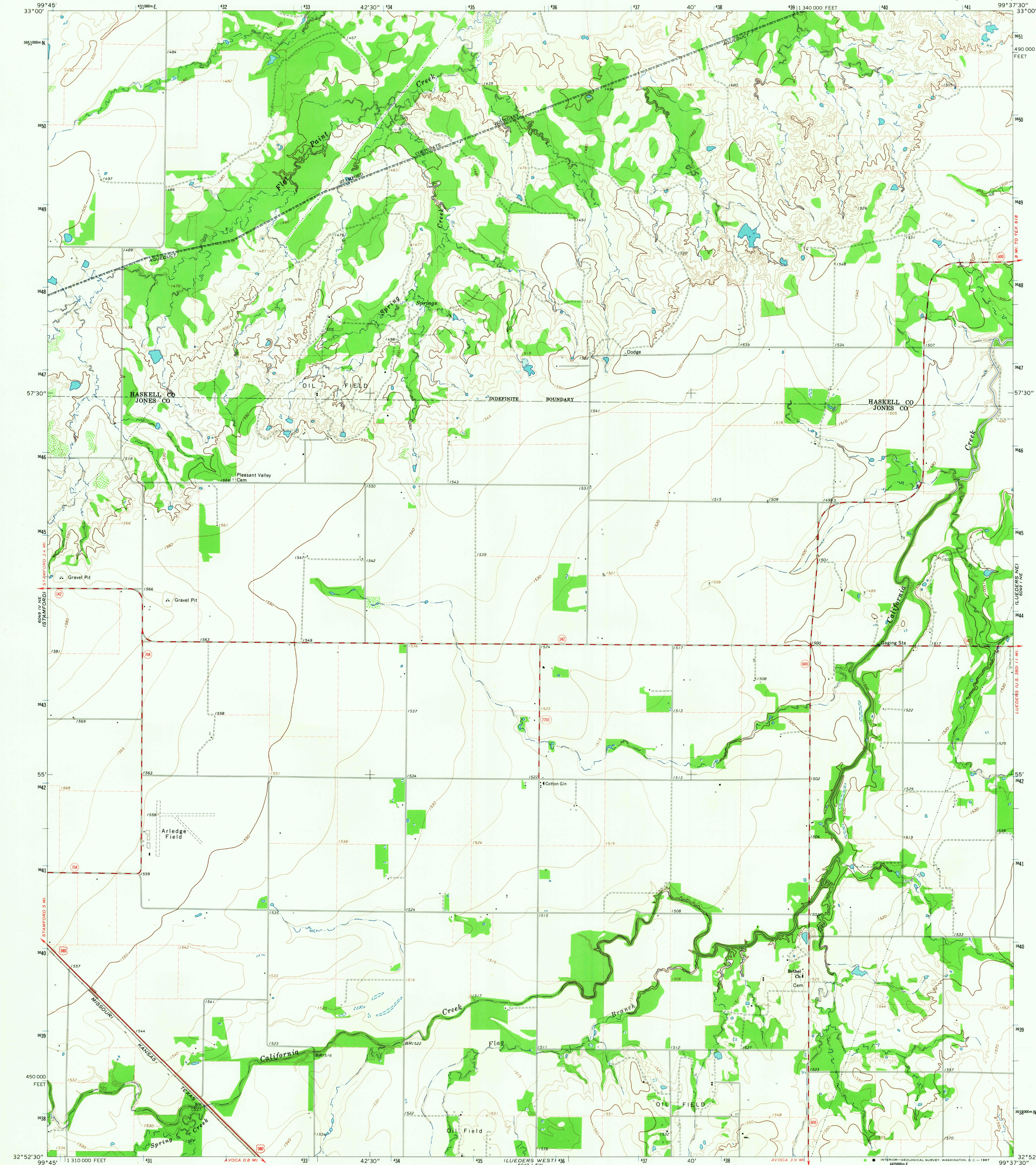


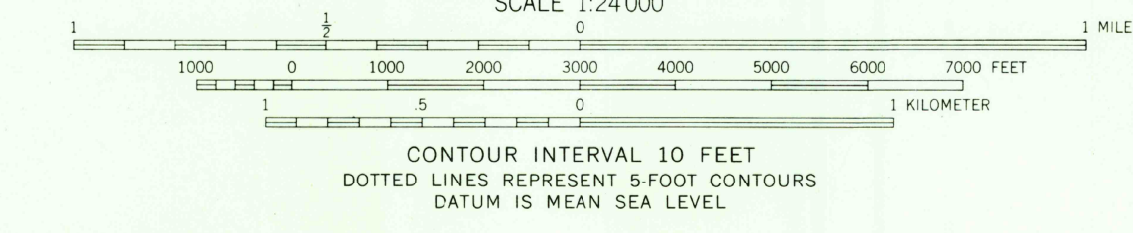
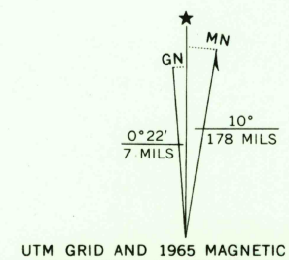
FILE COPY
U.S. GEOLOGICAL SURVEY
1965

UNITED STATES
DEPARTMENT OF THE INTERIOR
GEOLOGICAL SURVEY

LUEDEBS NW QUADRANGLE
TEXAS
7.5 MINUTE SERIES (TOPOGRAPHIC)



Mapped, edited, and published by the Geological Survey
Control by USGS and USC&GS
Topography by photogrammetric methods from aerial
photographs taken 1964. Field checked 1965
Polyconic projection. 1927 North American datum
10,000-foot grid based on Texas coordinate system,
north central zone
1000-meter Universal Transverse Mercator grid ticks,
zone 14, shown in blue
Fine red dashed lines indicate selected fence lines



QUADRANGLE LOCATION

U.S.G.S.
FILE COPY
TOPOGRAPHIC DIVISION

| ROAD CLASSIFICATION | |
|---------------------|-----------------|
| Heavy-duty | Light-duty |
| Medium-duty | Unimproved dirt |
| U.S. Route | State Route |

LUEDEBS NW, TEX.
N3252.5-W9937.5/7.5
1965

AMS 6049 I NW-SERIES V882

2775
JAN 17 1968