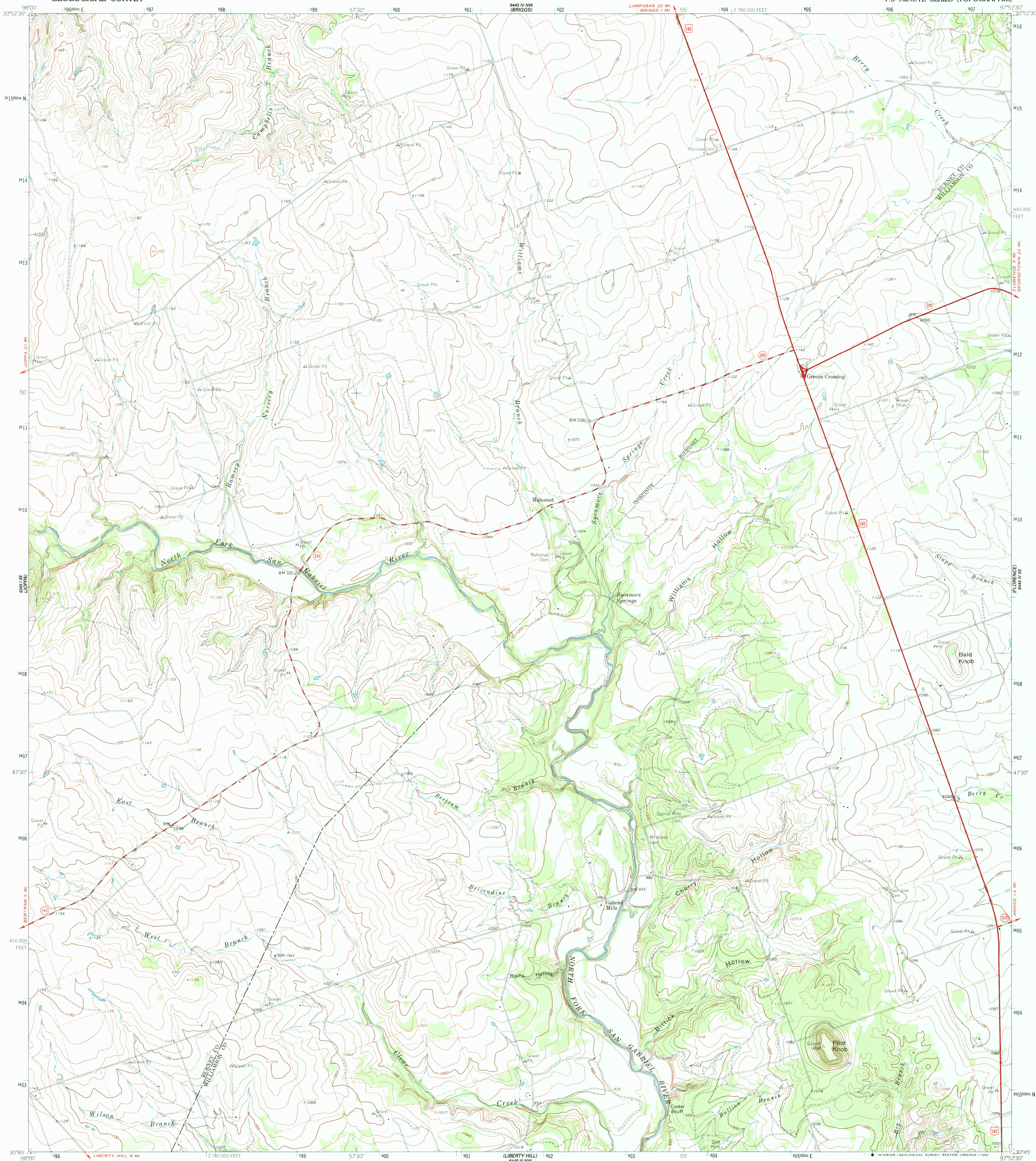


BASE MAP  
FOR  
FIELD  
CHECK

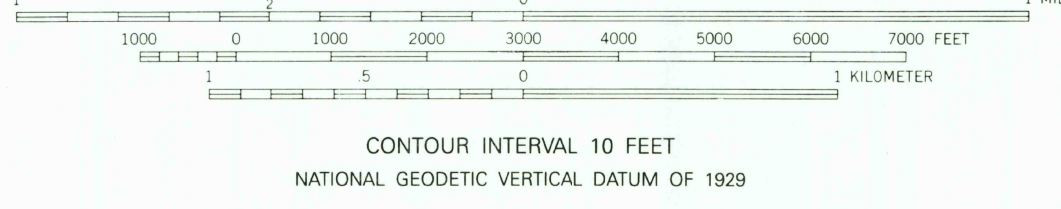
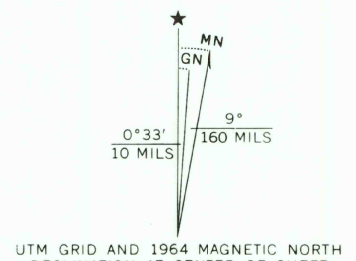
UNITED STATES  
DEPARTMENT OF THE INTERIOR  
GEOLOGICAL SURVEY

MAHOMET QUADRANGLE  
TEXAS  
7.5 MINUTE SERIES (TOPOGRAPHIC)

BASE MAP  
FOR  
FIELD  
CHECK



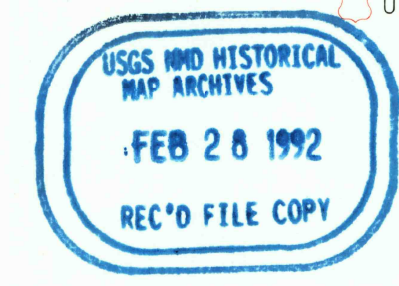
Maped, edited, and published by the Geological Survey  
Control by USGS and NOS/NOAA  
Topography by photogrammetric methods from aerial photographs  
taken 1963. Field checked 1964  
Polyconic projection. 1927 North American Datum  
10,000-foot grid based on Texas coordinate system,  
central zone  
1000-meter Universal Transverse Mercator grid ticks, zone 14,  
shown in blue  
The difference between 1927 North American Datum and North  
American Datum of 1983 (NAD 83) for 7.5 minute intersections is  
given in USGS Bulletin 1875. The NAD 83 is shown by dashed  
corner ticks  
Fine red dashed lines indicate selected fence lines



THIS MAP COMPLIES WITH NATIONAL MAP ACCURACY STANDARDS  
FOR SALE BY U.S. GEOLOGICAL SURVEY  
DENVER, COLORADO 80225, OR RESTON, VIRGINIA 22092  
A FOLDER DESCRIBING TOPOGRAPHIC MAPS AND SYMBOLS IS AVAILABLE ON REQUEST



QUADRANGLE LOCATION  
3097-332



MAHOMET, TEX.  
30097-G8-TF-024  
1964

DMA 6445 IV SW-SERIES V882

BASE MAP  
FOR  
FIELD  
CHECK