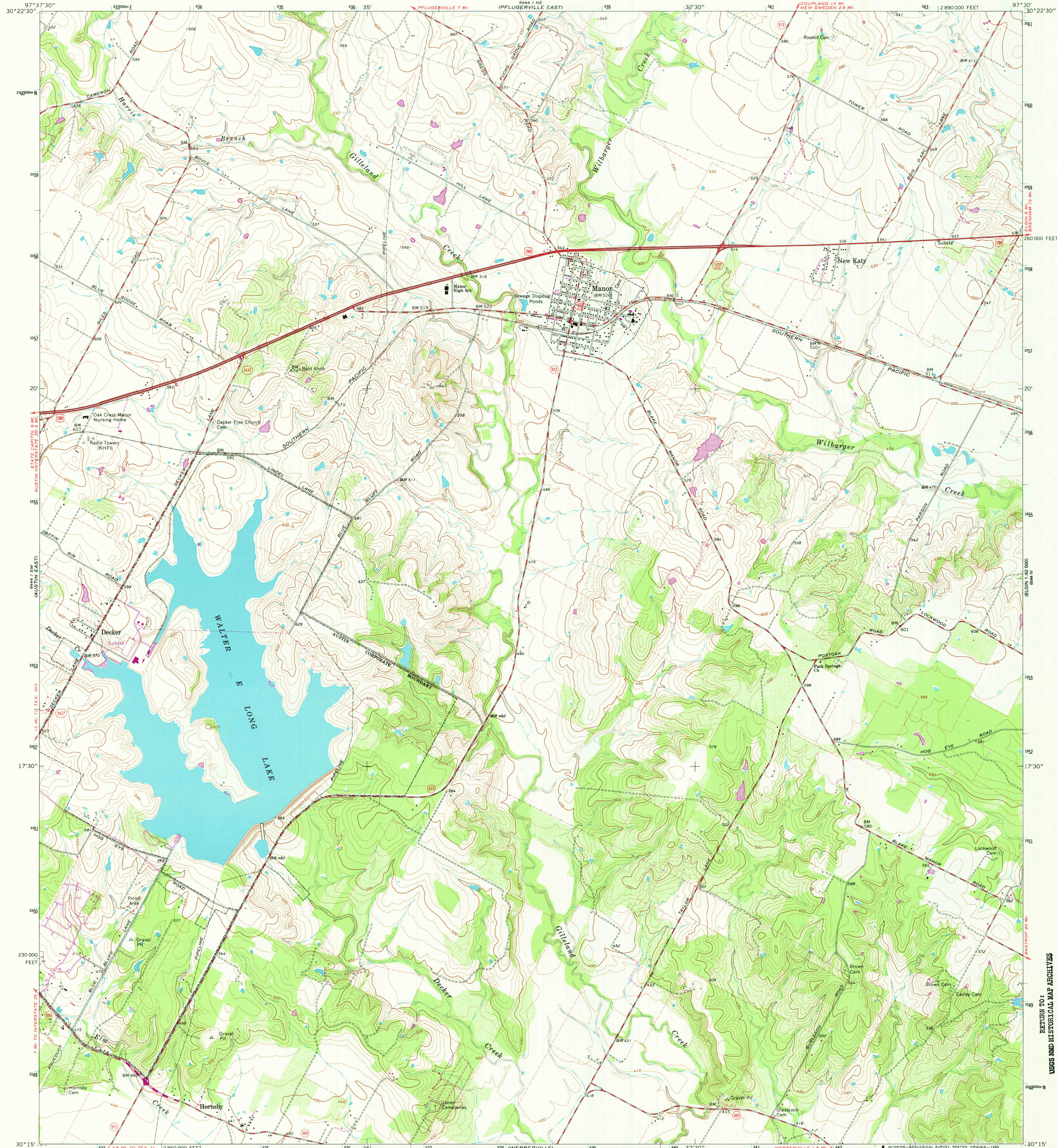


UNITED STATES
DEPARTMENT OF THE INTERIOR
GEOLOGICAL SURVEY

MANOR QUADRANGLE
TEXAS—TRAVIS CO.
7.5 MINUTE SERIES (TOPOGRAPHIC)
SE/4 AUSTIN 15' QUADRANGLE



Mapped, edited, and published by the Geological Survey
Control by USGS and USC&GS

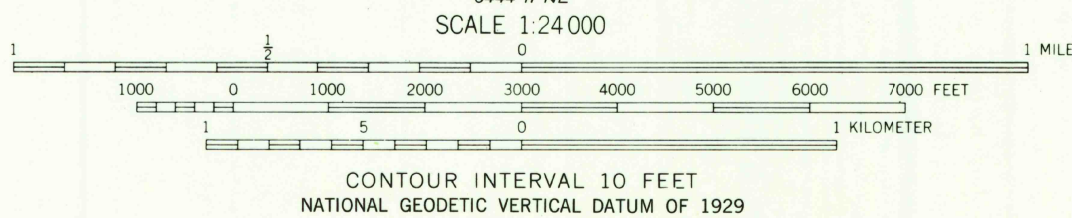
Topography by photogrammetric methods from aerial
photographs taken 1967. Field checked 1968

Polyconic projection. 1927 North American datum
10,000-foot grid based on Texas coordinate system,
central zone.
1000-meter Universal Transverse Mercator grid ticks,
zone 14, shown in blue

Fine red dashed lines indicate selected fence lines

Revisions shown in purple compiled from aerial photographs
taken 1973. This information not field checked

To place on the predicted North American Datum 1983
move the projection lines 18 meters south and
27 meters east as shown by dashed corner ticks



ROAD CLASSIFICATION
Primary highway,
hard surface
Secondary highway,
hard surface
Light-duty road, hard or
improved surface
Unimproved road
Interstate Route
U. S. Route
State Route

MANOR, TEX.
SE/4 AUSTIN 15' QUADRANGLE
N3015—W9730/7.5

1968
PHOTOREVISED 1973
DMA 6444 I SE—SERIES V882

3097-241

RETURN TO:
USGS NHD HISTORICAL MAP ARCHIVES

SEP 8 1982

9000