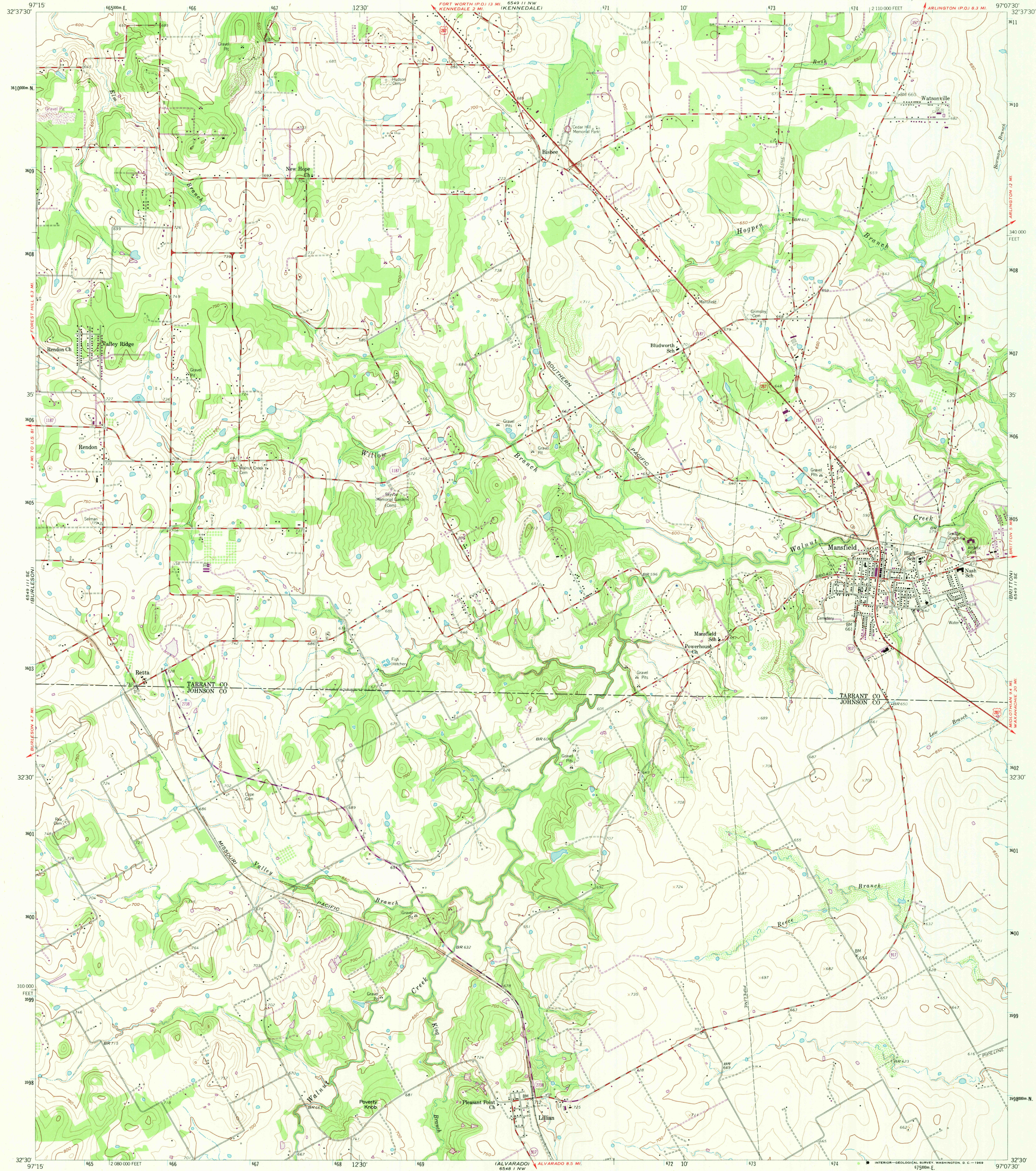


6549 11 NW  
(FORT WORTH)

UNITED STATES  
DEPARTMENT OF THE INTERIOR  
GEOLOGICAL SURVEY

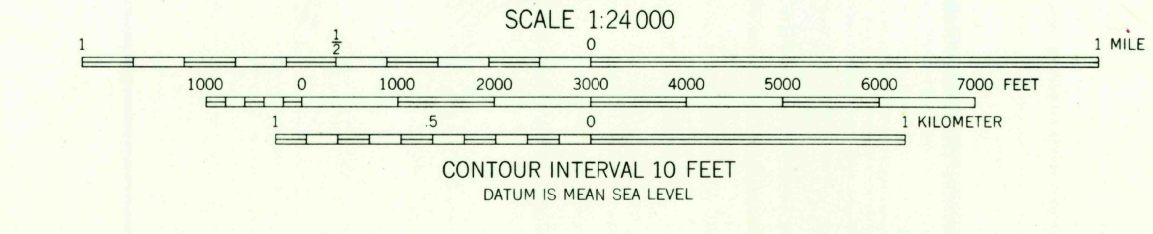
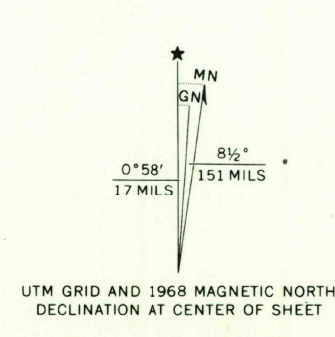
MANSFIELD QUADRANGLE  
TEXAS  
7.5 MINUTE SERIES (TOPOGRAPHIC)  
SW 1/4 ARLINGTON 15' QUADRANGLE

6549 11 NE  
(ARLINGTON)



(KEENE)  
6548 11 SE

Mapped, edited, and published by the Geological Survey  
Control by USGS and USC&GS  
Topography from aerial photographs by photogrammetric methods  
Aerial photographs taken 1956. Field check 1959  
Polyconic projection. 1927 North American datum  
10,000-foot grid based on Texas coordinate system,  
north central zone  
1000-meter Universal Transverse Mercator grid ticks,  
zone 14, shown in blue  
Revisions shown in purple compiled by the Geological Survey from  
aerial photographs taken 1968. This information not field checked



THIS MAP COMPLIES WITH NATIONAL MAP ACCURACY STANDARDS  
FOR SALE BY U.S. GEOLOGICAL SURVEY, DENVER, COLORADO 80225, OR WASHINGTON, D.C. 20242  
A FOLDER DESCRIBING TOPOGRAPHIC MAPS AND SYMBOLS IS AVAILABLE ON REQUEST



ROAD CLASSIFICATION

Heavy-duty	Light-duty
Medium-duty	Unimproved dirt
U.S. Route	State Route

U.S.G.S. FILE COPY TOPOGRAPHIC DIVISION

MANSFIELD, TEX. SEP 11 1969

SW 1/4 ARLINGTON 15' QUADRANGLE  
N3230-W9707.5/7.5  
1959  
PHOTOREVISED 1968  
AMS 6549 11 SW-SERIES V882

RETURN TO:  
USGS NHD HISTORICAL MAP ARCHIVES