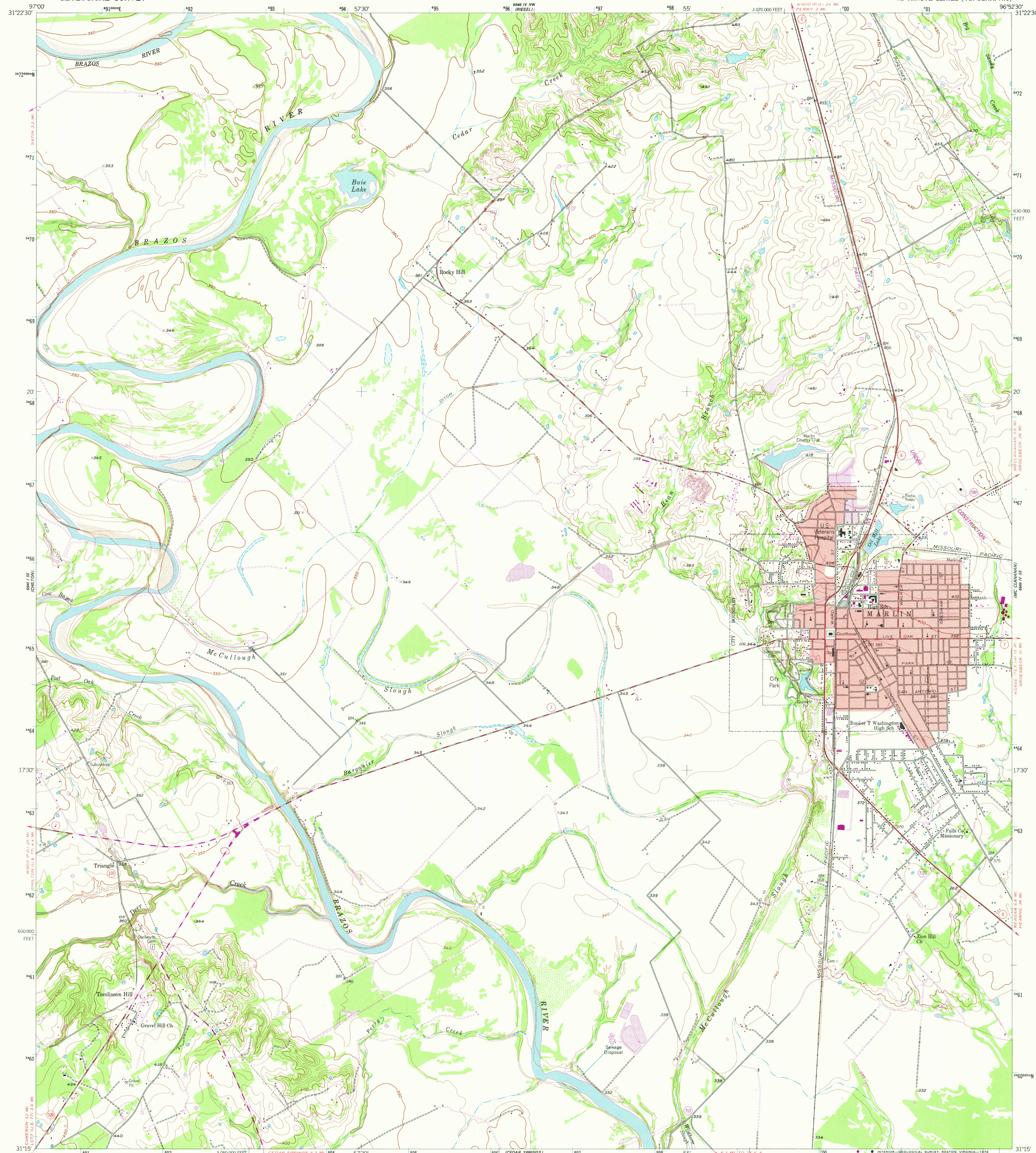


Scale 1:24,000  
(NAD 83)

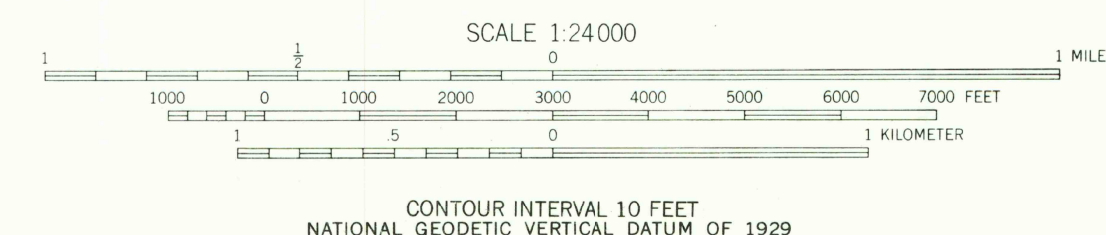
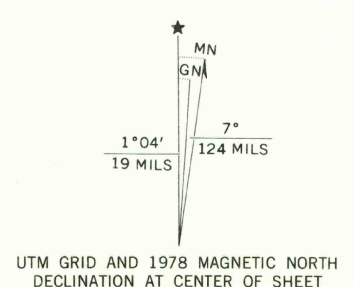
UNITED STATES  
DEPARTMENT OF THE INTERIOR  
GEOLOGICAL SURVEY

MARLIN QUADRANGLE  
TEXAS-FALLS CO.  
7.5 MINUTE SERIES (TOPOGRAPHIC)

Scale 1:24,000  
(NAD 83)



Maped, edited, and published by the Geological Survey  
Control by USGS and USC&GS  
Topography from aerial photographs by ER-55 plotter  
Aerial photographs taken 1955. Field check 1957  
Polyconic projection. 1927 North American datum  
10,000-foot grid based on Texas coordinate system,  
central zone  
1000-meter Universal Transverse Mercator grid ticks,  
zone 14, shown in blue  
Red tint indicates areas in which only  
landmark buildings are shown  
Revision shown in purple compiled from aerial photographs  
taken 1976 and other source data. This information not  
field checked. Map edited 1978  
Purple tint indicates extension of urban areas



ROAD CLASSIFICATION  
Heavy-duty ——— Light-duty ———  
Medium-duty ——— Unimproved dirt ———  
State Route

USGS  
Historical File  
Topographic Division

MARLIN, TEX.  
N3115-W9652.5/7.5

1957  
PHOTOREVISED 1978  
AMS 6646 IV SW-SERIES V862

THIS MAP COMPLIES WITH NATIONAL MAP ACCURACY STANDARDS  
FOR SALE BY U. S. GEOLOGICAL SURVEY, DENVER, COLORADO 80225, OR RESTON, VIRGINIA 22092  
A FOLDER DESCRIBING TOPOGRAPHIC MAPS AND SYMBOLS IS AVAILABLE ON REQUEST

3198-232

JAN 10 1979

RETURN TO:  
USGS AND HISTORICAL MAP ARCHIVES