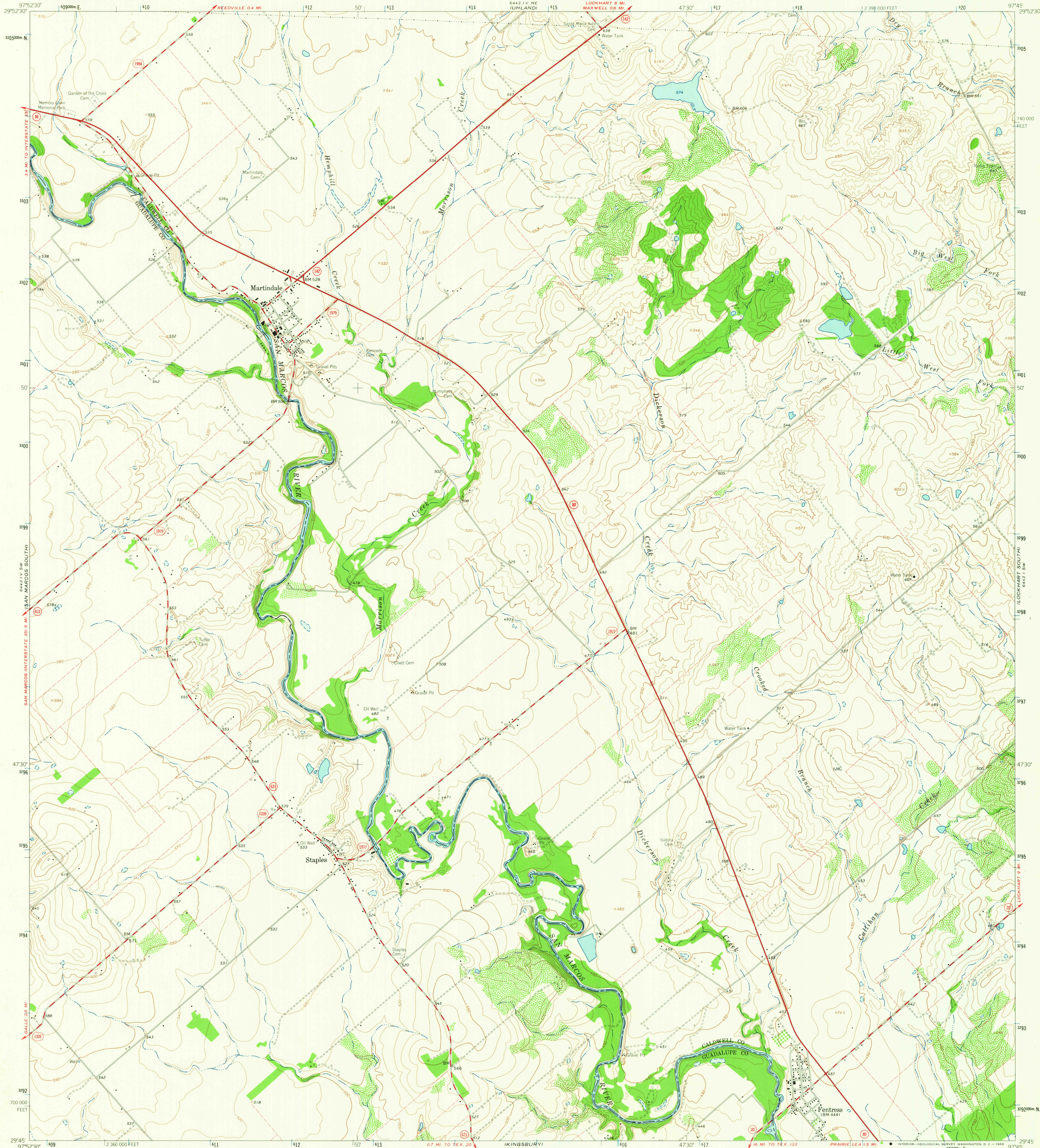
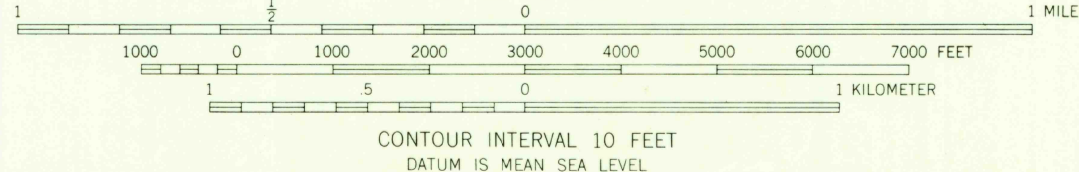
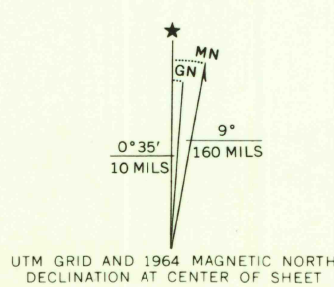


UNITED STATES
DEPARTMENT OF THE INTERIOR
GEOLOGICAL SURVEY

MARTINDALE QUADRANGLE
TEXAS
7.5 MINUTE SERIES (TOPOGRAPHIC)



Map by the Army Map Service
Edited and published by the Geological Survey
Control by USGS, USC&GS, and USCE
Topography by photogrammetric methods from aerial
photographs taken 1958. Field checked by USGS 1964
Polyconic projection. 1927 North American datum.
10,000-foot grid based on Texas coordinate system, south central zone
10,000-meter Universal Transverse Mercator grid ticks,
zone 14, shown in blue
Fine red dashed lines indicate selected fence lines



THIS MAP COMPLIES WITH NATIONAL MAP ACCURACY STANDARDS
FOR SALE BY U.S. GEOLOGICAL SURVEY, DENVER, COLORADO 80225, OR WASHINGTON, D.C. 20242
A FOLDER DESCRIBING TOPOGRAPHIC MAPS AND SYMBOLS IS AVAILABLE ON REQUEST



U.S.G.S.
FILE COPY
TOPOGRAPHIC DIVISION

MARTINDALE, TEX.
N2945-W9745/7.5

1964

AMS 6443 IV SE-SERIES V882

2705
MAR 3 1966