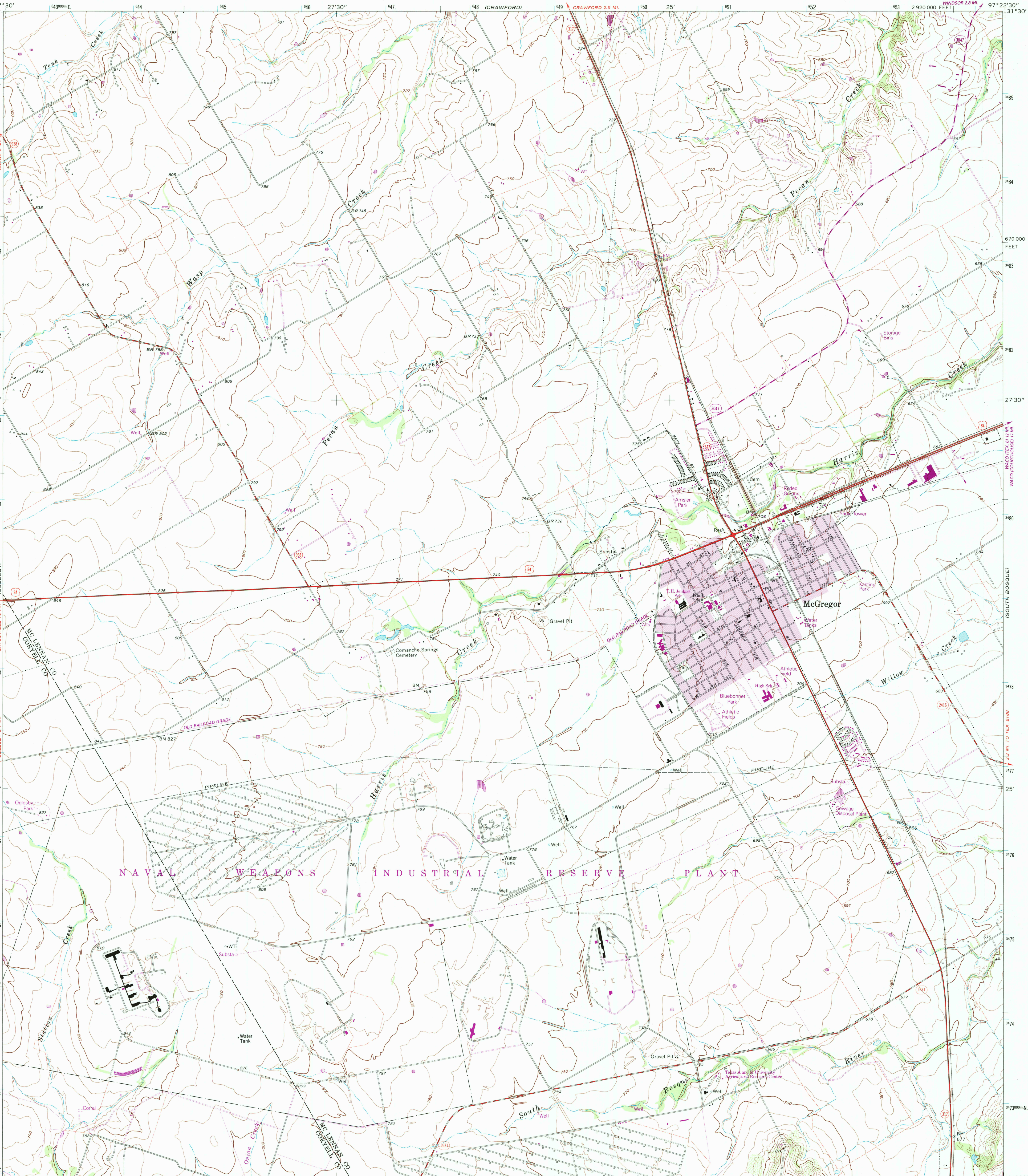
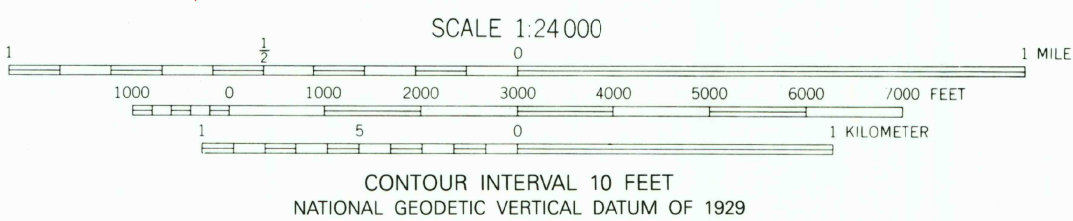
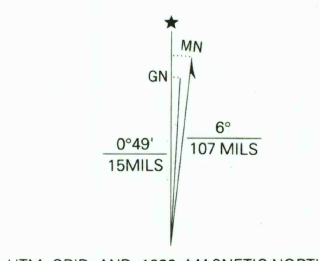


UNITED STATES  
DEPARTMENT OF THE INTERIOR  
GEOLOGICAL SURVEY

MC GREGOR QUADRANGLE  
TEXAS  
7.5 MINUTE SERIES (TOPOGRAPHIC)



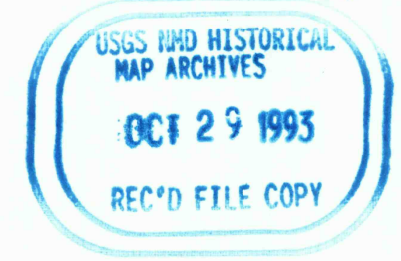
Produced by the United States Geological Survey  
Control by USGS and NOS/NOAA  
Compiled from aerial photographs taken 1964. Revisions shown in purple and woodland compiled from aerial photographs taken 1990 and other sources and has been field checked. Map edited 1993  
Conflicts may exist between some updated features and previously mapped contours  
North American Datum of 1927 (NAD 27). Projection and 10000-foot grid ticks: Texas Coordinate System, central zone (Lambert Conformal Conic)  
Blue 1000-meter Universal Transverse Mercator ticks, zone 14  
North American Datum 1983 (NAD 83) is shown by dashed corner ticks. The values of the shift between NAD 27 and NAD 83 for 7.5 minute intersections is given in USGS Bulletin 1875.  
There may be private inholdings within the boundaries of the National or State reservations shown on this map  
Purple tint indicates areas in which only landmark buildings are shown



THIS MAP COMPLIES WITH NATIONAL MAP ACCURACY STANDARDS  
FOR SALE BY U.S. GEOLOGICAL SURVEY  
DENVER, COLORADO 80225, OR RESTON, VIRGINIA 22092  
A FOLDER DESCRIBING TOPOGRAPHIC MAPS AND SYMBOLS IS AVAILABLE ON REQUEST



QUADRANGLE LOCATION



MC GREGOR, TEX.  
31097-D4-TF-024  
1985  
REVISED 1993  
DMA 6546 IV NW-SERIES V882

3197-133