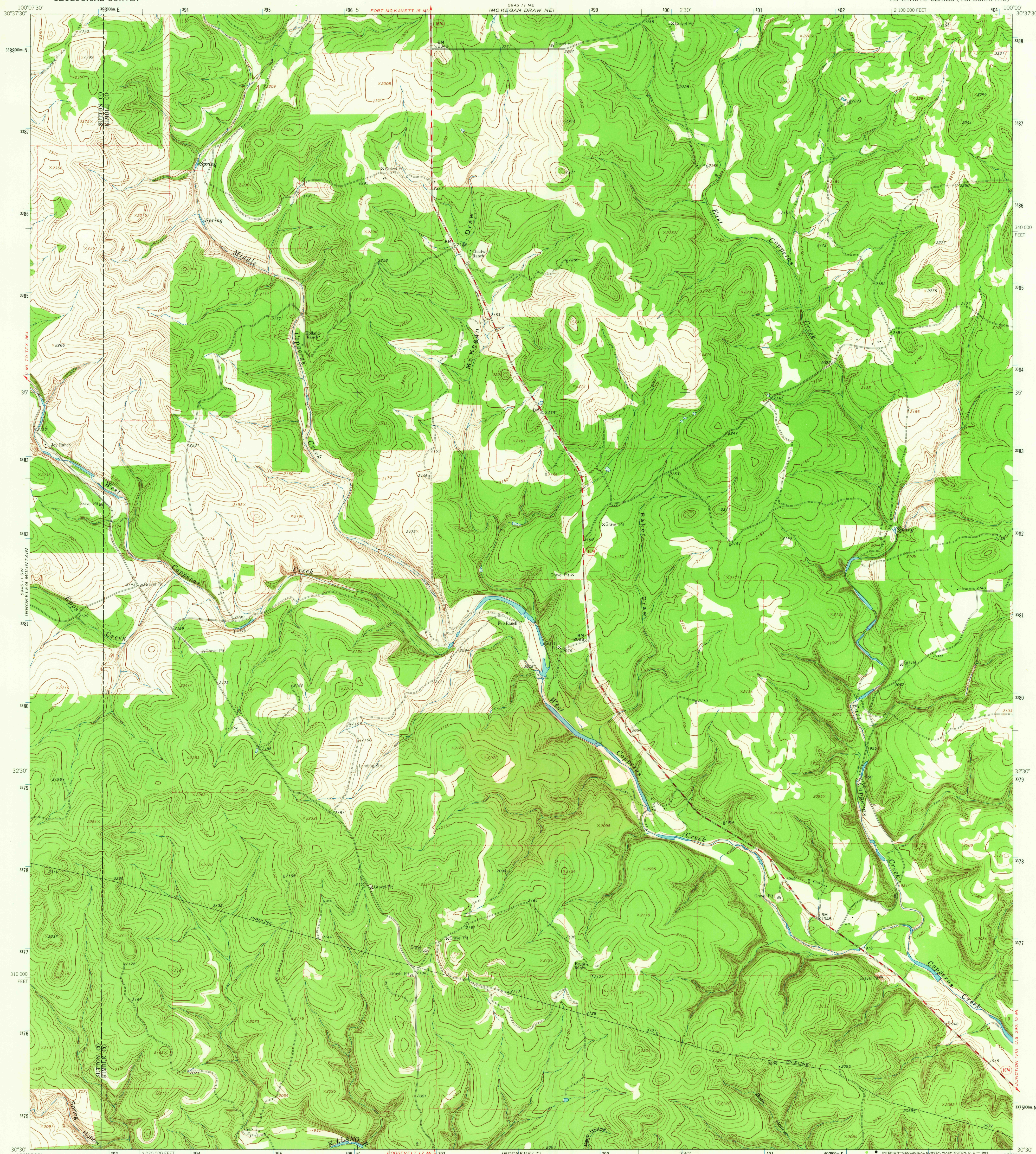


5944 I NW
FOOT JERREY RANCH

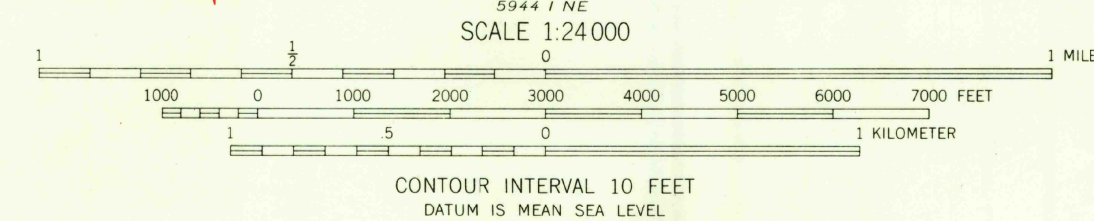
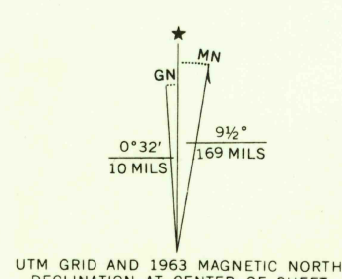
UNITED STATES
DEPARTMENT OF THE INTERIOR
GEOLOGICAL SURVEY

MC KEGAN DRAW QUADRANGLE
TEXAS
7.5 MINUTE SERIES (TOPOGRAPHIC)



5944 I NW
FOOT JERREY RANCH

Mapped, edited, and published by the Geological Survey
Control by USGS and USC&GS
Topography by photogrammetric methods from aerial
photographs taken 1962. Field checked 1963
Polyconic projection. 1927 North American datum
10,000-foot grid based on Texas coordinate system, central zone
1000-meter Universal Transverse Mercator grid ticks,
zone 14, shown in blue
Fine red dashed lines indicate selected fence lines



ROAD CLASSIFICATION
Medium-duty ——— Light-duty ———
Unimproved dirt ———
State Route



U.S.G.S.
TOPOGRAPHIC DIVISION

MC KEGAN DRAW, TEX.
N3030-W10000/7.5
1963

AMS 5945 II SE-SERIES V882

RETURN TO:
USGS AND HISTORICAL MAP ARCHIVES

2170
MAR 24 1966