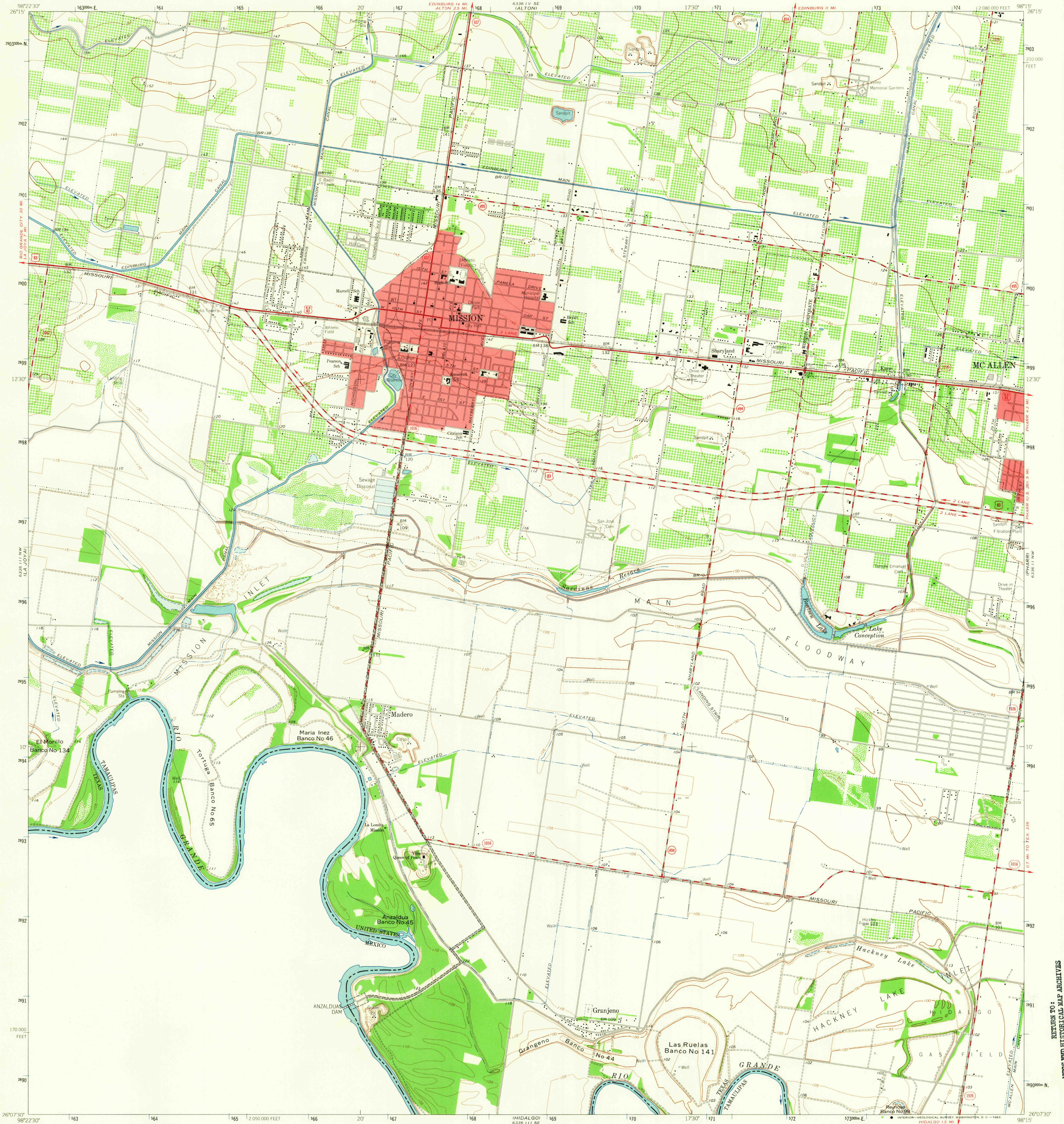


UNITED STATES  
DEPARTMENT OF THE INTERIOR  
GEOLOGICAL SURVEY

MISSION QUADRANGLE  
TEXAS-HIDALGO CO.  
7.5 MINUTE SERIES (TOPOGRAPHIC)  
NE/4 MISSION QUADRANGLE

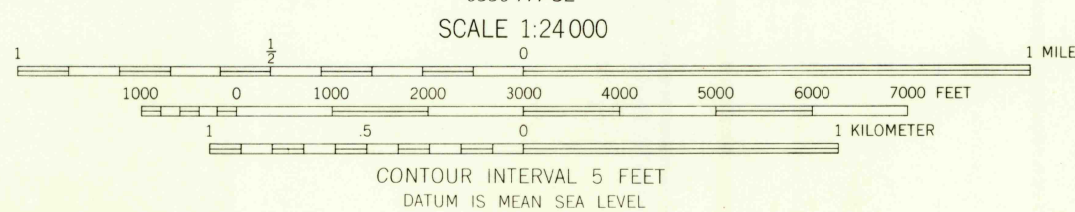
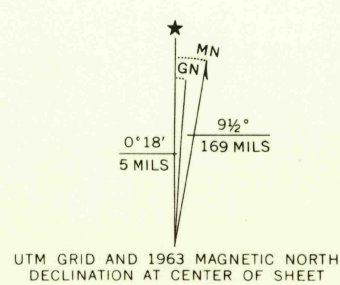


Mapped, edited, and published by the Geological Survey  
Control by USGS and USC&GS

Planimetry by photogrammetric methods from aerial photographs  
taken 1961. Topography by planetable surveys 1963

Polyconic projection. 1927 North American datum  
10,000-foot grid based on Texas coordinate system, south zone  
1000-meter Universal Transverse Mercator grid ticks,  
zone 14, shown in blue

Red tint indicates areas in which only landmark buildings are shown



THIS MAP COMPLIES WITH NATIONAL MAP ACCURACY STANDARDS  
FOR SALE BY U.S. GEOLOGICAL SURVEY, DENVER 25, COLORADO OR WASHINGTON 25, D.C.  
A FOLDER DESCRIBING TOPOGRAPHIC MAPS AND SYMBOLS IS AVAILABLE ON REQUEST



U.S.G.S.  
FILE COPY  
TOPOGRAPHIC DIVISION

ROAD CLASSIFICATION  
Heavy-duty ——— Light-duty ———  
Medium-duty ——— Unimproved dirt ———  
U.S. Route ——— State Route ———

MISSION, TEX.  
NE/4 MISSION QUADRANGLE  
N2607.5-W9815.7 5

1963

AMS 6356 111 NE-SERIES V882

RETURN TO:  
USGS AND HISTORICAL MAP ARCHIVES

FEB 15 1965

2560