

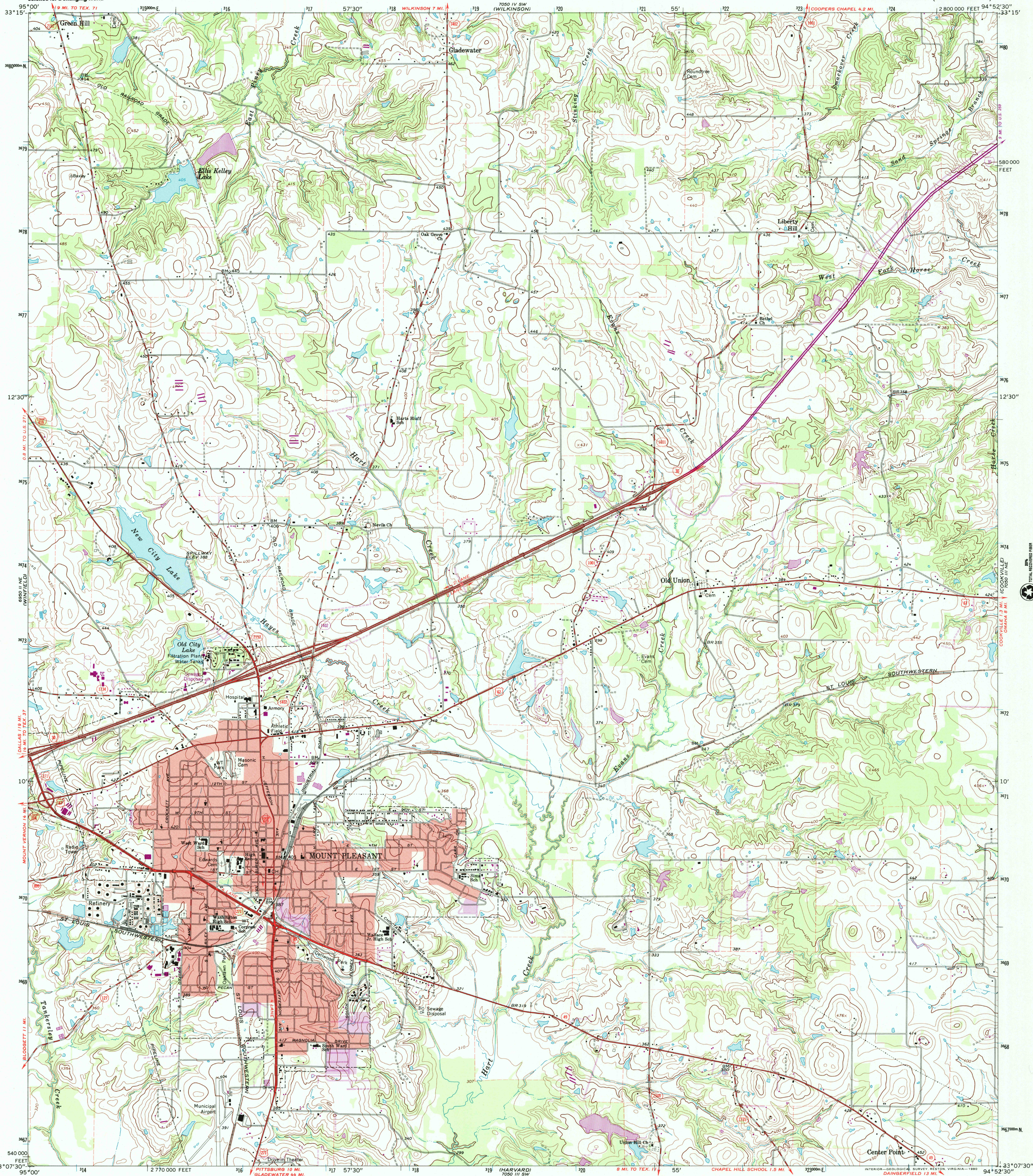
880 185  
1742000



U.S. DEPARTMENT OF THE INTERIOR  
U.S. GEOLOGICAL SURVEY

MOUNT PLEASANT QUADRANGLE  
TEXAS—TITUS CO.  
7.5 MINUTE SERIES (TOPOGRAPHIC)

7050 IV SW  
COOPERS CHAPEL



Mapped, edited, and published by the Geological Survey

Control by USGS and USC&GS

Topography by photogrammetric methods from aerial  
photographs taken 1964. Field checked 1965

Polyconic projection

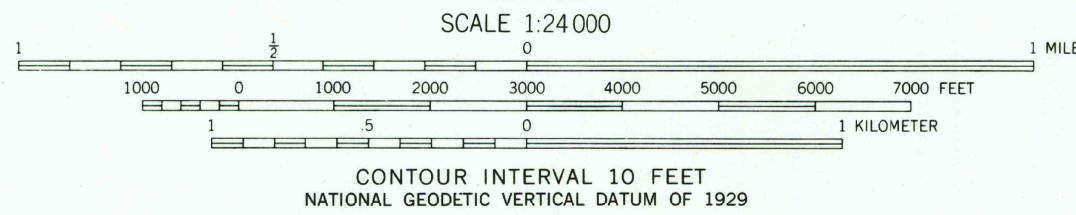
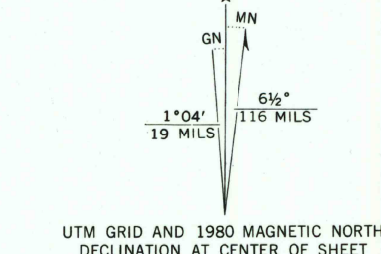
10,000-foot grid based on Texas coordinate system, north central zone  
1000-meter Universal Transverse Mercator grid ticks,  
zone 15, shown in blue. 1927 North American Datum

To place on the predicted North American Datum 1983  
move the projection lines 9 meters south and  
20 meters east as shown by dashed corner ticks

Red tint indicates area in which only landmark buildings are shown

Fine red dashed lines indicate selected fence lines

Revisions shown in purple and woodland compiled from  
aerial photographs taken 1976 and other source data  
This information not field checked. Map edited 1980



ROAD CLASSIFICATION

Heavy-duty ——— Light-duty ———  
Medium-duty ——— Unimproved dirt ———  
Interstate Route U.S. Route State Route



QUADRANGLE LOCATION

RECEIVED  
JUN 30 2001

USGS NW-1  
HISTORICAL MAP ARCHIVES

MOUNT PLEASANT, TEX.  
N3307.5—W9452.5/7.5

1965  
PHOTOREVISED 1980  
DMA 7050 III NW—SERIES V882

THIS MAP COMPLIES WITH NATIONAL MAP ACCURACY STANDARDS  
FOR SALE BY U.S. GEOLOGICAL SURVEY, P.O. BOX 252886, DENVER, COLORADO 80225  
A FOLDER DESCRIBING TOPOGRAPHIC MAPS AND SYMBOLS IS AVAILABLE ON REQUEST

3394-223

