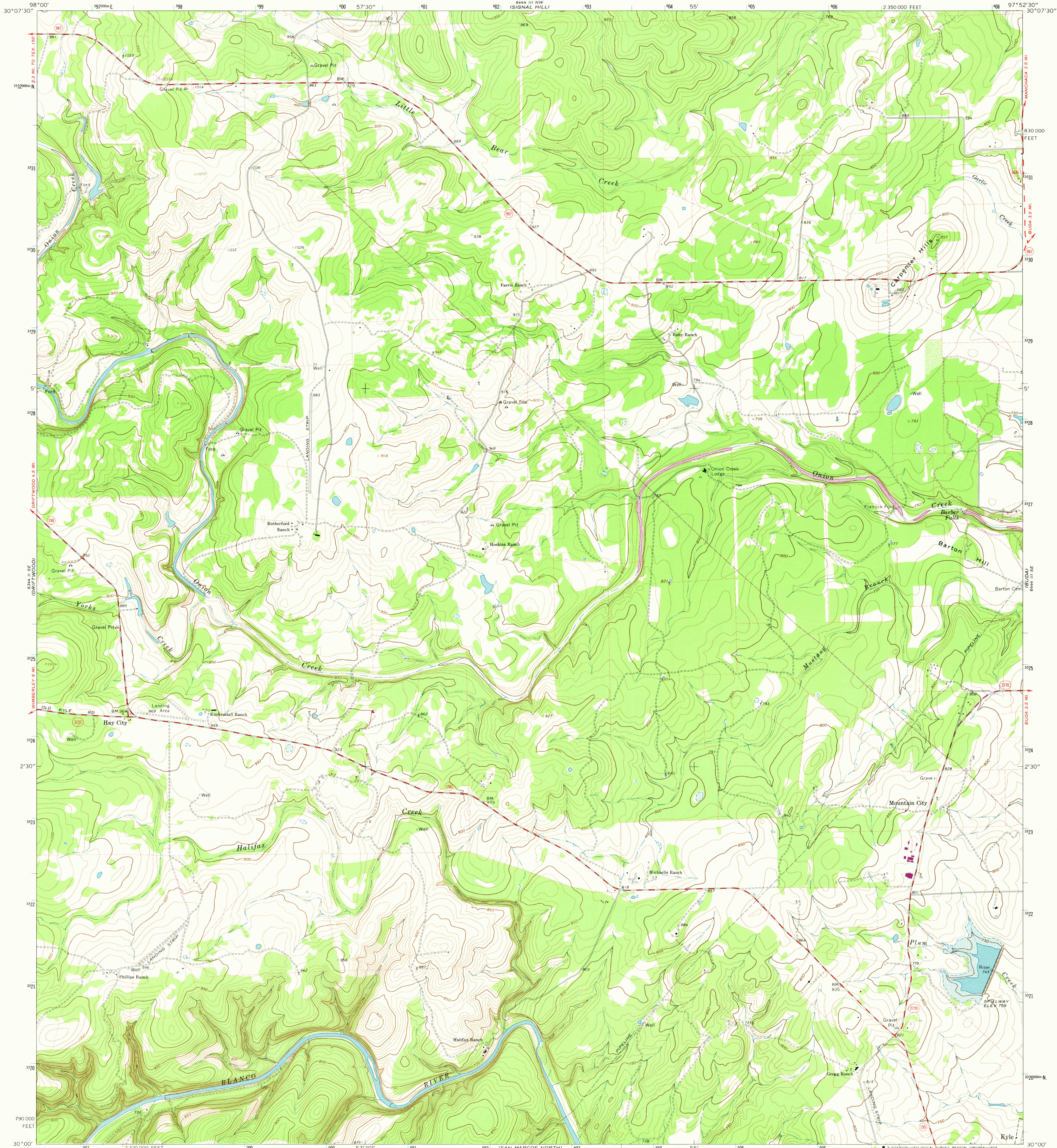
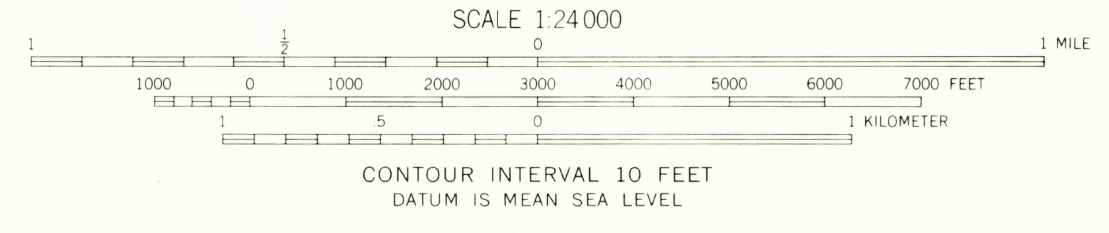
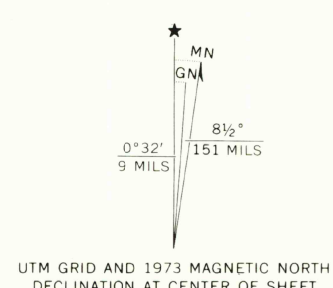


UNITED STATES
DEPARTMENT OF THE INTERIOR
GEOLOGICAL SURVEY

MOUNTAIN CITY QUADRANGLE
TEXAS—HAYS CO.
7.5 MINUTE SERIES (TOPOGRAPHIC)
SW/4 BUDA 15' QUADRANGLE



Maped, edited, and published by the Geological Survey
Control by USGS and USC&GS
Topography by photogrammetric methods from aerial
photographs taken 1967. Field checked 1968.
Polyconic projection. 1927 North American datum
10,000-foot grid based on Texas coordinate system,
south central zone
1000-meter Universal Transverse Mercator grid ticks,
zone 14, shown in blue
Fine red dashed lines indicate selected fence lines
Areas covered by dashed light-blue pattern are subject
to controlled inundation
Revisions shown in purple compiled from aerial photographs
taken 1973. This information not field checked



ROAD CLASSIFICATION
Primary highway, hard surface —————
Secondary highway, hard surface - - - - -
Unimproved road - - - - -
Interstate Route ——— U. S. Route ——— State Route ———

MOUNTAIN CITY, TEX.
SW/4 BUDA 15' QUADRANGLE
N3000—W9752.5/7.5
1968
PHOTOREVISED 1973
AMS 6444 III SW—SERIES V882

APR 8 1975

USGS
Historical File
Topographic Division