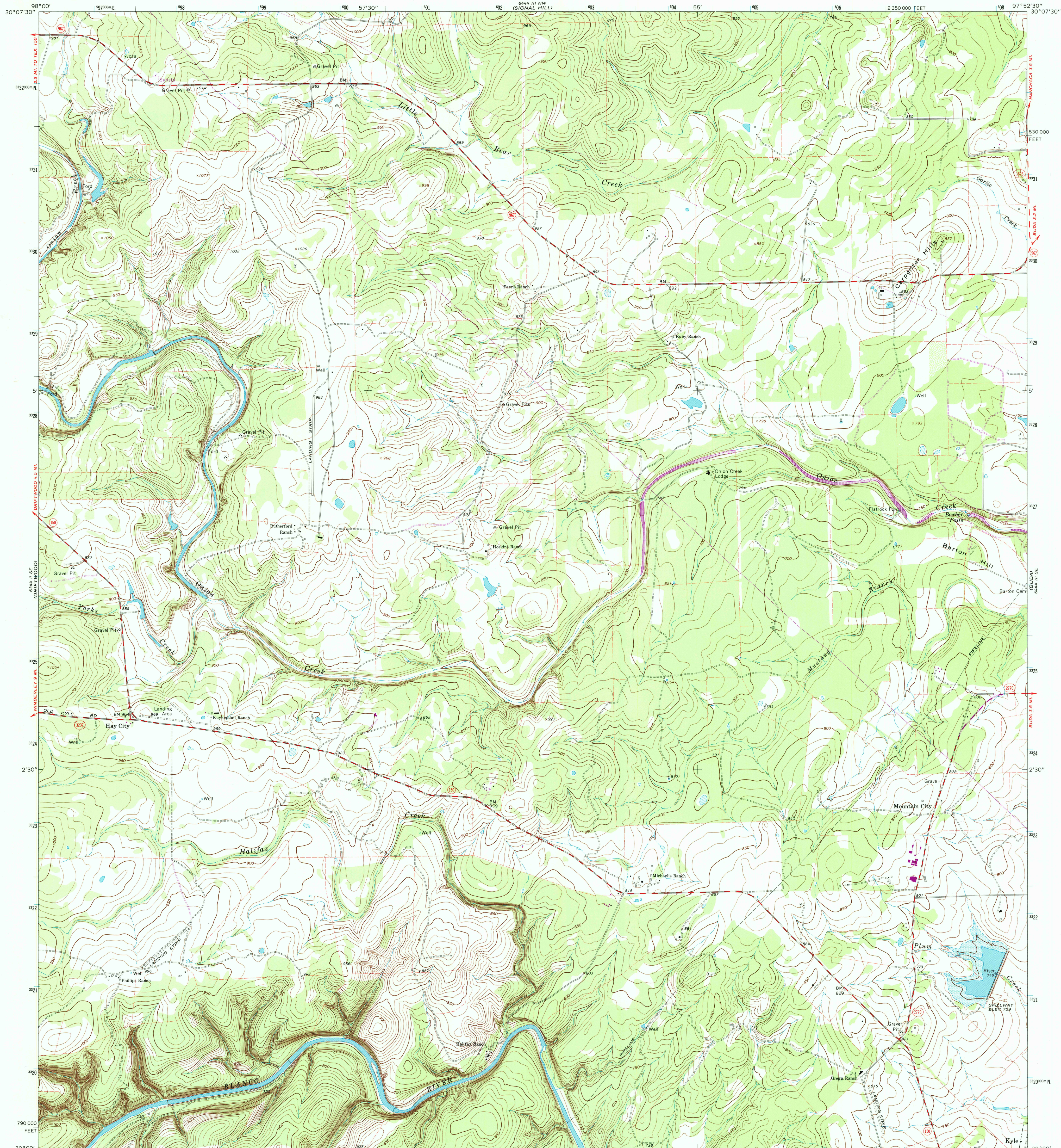


UNITED STATES
DEPARTMENT OF THE INTERIOR
GEOLOGICAL SURVEY

MOUNTAIN CITY QUADRANGLE
TEXAS—HAYS CO.
7.5 MINUTE SERIES (TOPOGRAPHIC)
SW/4 BUDA 15' QUADRANGLE



Mapped, edited, and published by the Geological Survey

Control by USGS and USC&GS

Topography by photogrammetric methods from aerial

photographs taken 1967. Field checked 1968

Polyconic projection. 1927 North American datum

10,000-foot grid based on Texas coordinate system,

south central zone

1000-meter Universal Transverse Mercator grid ticks,

zone 14, shown in blue

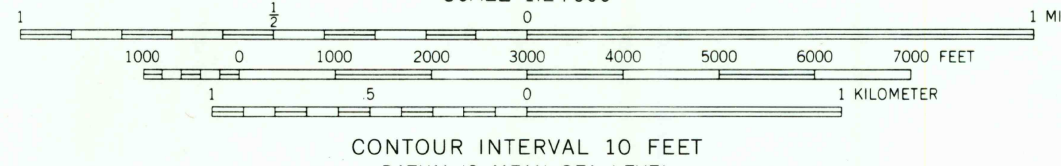
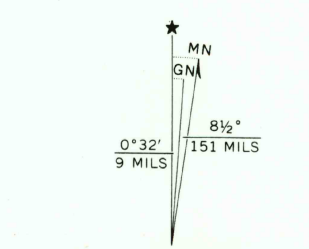
Fine red dashed lines indicate selected fence lines

Areas covered by dashed light-blue pattern are subject

to controlled inundation

Revisions shown in purple compiled from aerial photographs

taken 1973. This information not field checked



THIS MAP COMPLIES WITH NATIONAL MAP ACCURACY STANDARDS
FOR SALE BY U. S. GEOLOGICAL SURVEY, DENVER, COLORADO 80225, OR RESTON, VIRGINIA 22092
A FOLDER DESCRIBING TOPOGRAPHIC MAPS AND SYMBOLS IS AVAILABLE ON REQUEST

ROAD CLASSIFICATION

Primary highway, hard surface	Light-duty road, hard or improved surface
Secondary highway, hard surface	Unimproved road
Interstate Route	U. S. Route
	State Route

USGS NMD HISTORICAL MAP
MAY 21 1986
REC'D FILE COPY

MOUNTAIN CITY, TEX.
SW/4 BUDA 15' QUADRANGLE
N3000—W9752.5/7.5
1968
PHOTOREVISED 1973
AMS 6444 III SW—SERIES V882