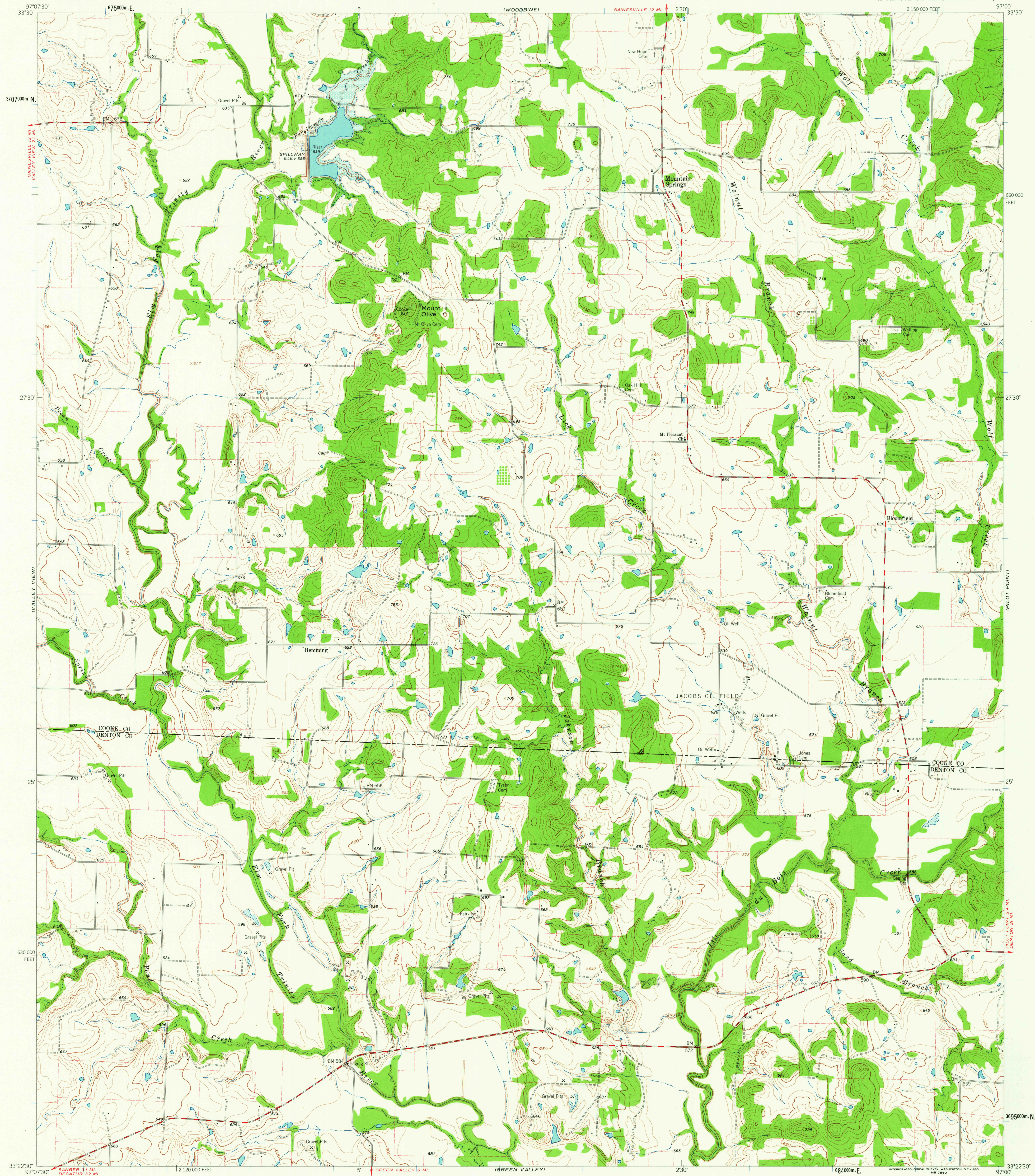


UNITED STATES
DEPARTMENT OF THE INTERIOR
GEOLOGICAL SURVEY

MOUNTAIN SPRINGS QUADRANGLE
TEXAS
7.5 MINUTE SERIES (TOPOGRAPHIC)



Mapped, edited, and published by the Geological Survey

Control by USGS and USC&GS

Topography by photogrammetric methods from aerial
photographs taken 1957. Field checked 1961

Polyconic projection. 1927 North American datum.
10,000-foot grid based on Texas coordinate system, north central zone.
1000-meter Universal Transverse Mercator grid ticks,
zone 14, shown in blue.

Fine red dashed lines indicate selected fence lines.

Areas covered by dashed light-blue pattern are subject
to controlled inundation.

TRUE NORTH
MAGNETIC NORTH
APPROXIMATE MEAN
DECLINATION, 1961

SCALE 1:24,000
1 1000 0 1000 2000 3000 4000 5000 6000 7000 FEET
1 KILOMETER
CONTOUR INTERVAL 10 FEET
DATUM IS MEAN SEA LEVEL

ROAD CLASSIFICATION
Medium-duty ——— Light-duty ———
Unimproved dirt ———



U.S.G.S.
FILE COPY
TOPOGRAPHIC DIVISION

MOUNTAIN SPRINGS, TEX.
N3322 5-W9700/7.5

1961

JUL 26 1963

2245