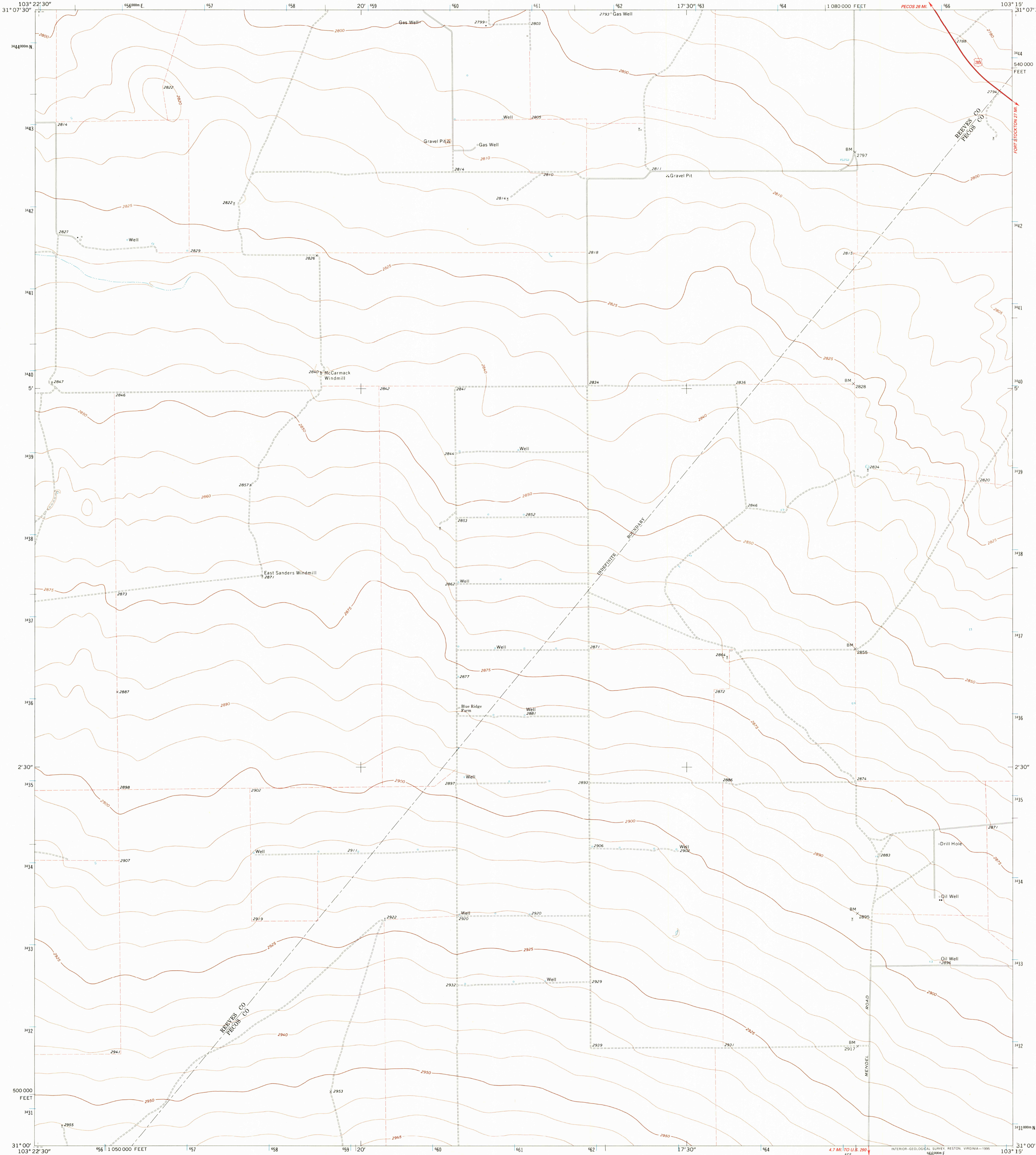
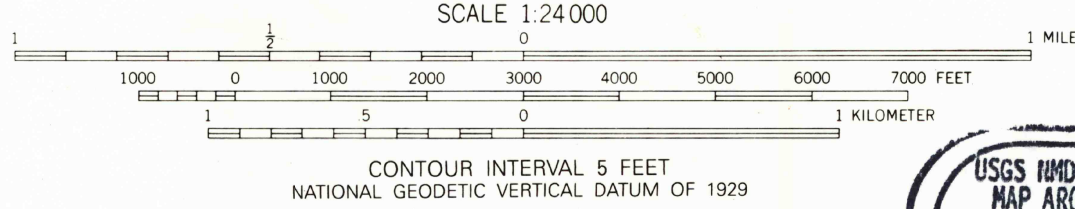
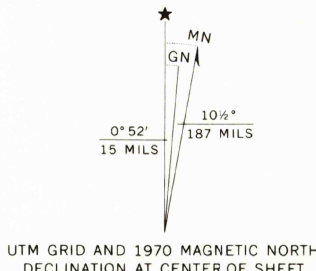


UNITED STATES
DEPARTMENT OF THE INTERIOR
GEOLOGICAL SURVEY

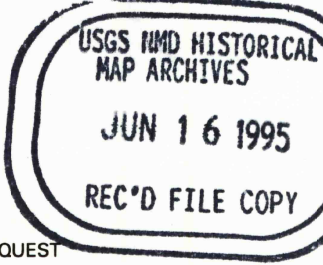
NORTH OF TUCKER HILL QUADRANGLE
TEXAS
7.5 MINUTE SERIES (TOPOGRAPHIC)
(FORMERLY BARSTOW 3 SE)



Produced by the United States Geological Survey
Control by USGS and NOS/NOAA
Compiled from aerial photographs taken 1969. Field checked 1970
North American Datum of 1927 (NAD 27). Projection and
10000-foot ticks: Texas Coordinate System, central zone
(Lambert Conformal Conic)
Blue 1000-meter Universal Transverse Mercator ticks, zone 13
North American Datum of 1983 (NAD 83) is shown by dashed
corner ticks. The values of the shift between NAD 27 and NAD 83
for 7.5-minute intersections are obtainable from National Geodetic
Survey NADCON software.
Fine red dashed lines indicate selected fence lines



THIS MAP COMPLIES WITH NATIONAL MAP ACCURACY STANDARDS
FOR SALE BY U.S. GEOLOGICAL SURVEY
DENVER, COLORADO 80225, OR RESTON, VIRGINIA 22092
A FOLDER DESCRIBING TOPOGRAPHIC MAPS AND SYMBOLS IS AVAILABLE ON REQUEST



QUADRANGLE LOCATION
3103-121

1	2	3
4	5	6
7	8	

1 Barrille Draw North
2 East of Barrille Draw North
3 Coyanosa NW
4 Barrille Draw South
5 Coyanosa SW
6 Deep Well Ranch NW
7 Tucker Hill
8 Belding NW

ADJOINING 7.5' QUADRANGLE NAMES

ROAD CLASSIFICATION
Primary highway, hard surface ——— Light-duty road, hard or improved surface
Secondary highway, hard surface ——— Unimproved road ———
○ Interstate Route ○ U. S. Route ○ State Route

NORTH OF TUCKER HILL, TX
(FORMERLY BARSTOW 3 SE)
31103-A3-TF-024

1970
DMA 5346 III SE-SERIES V882