

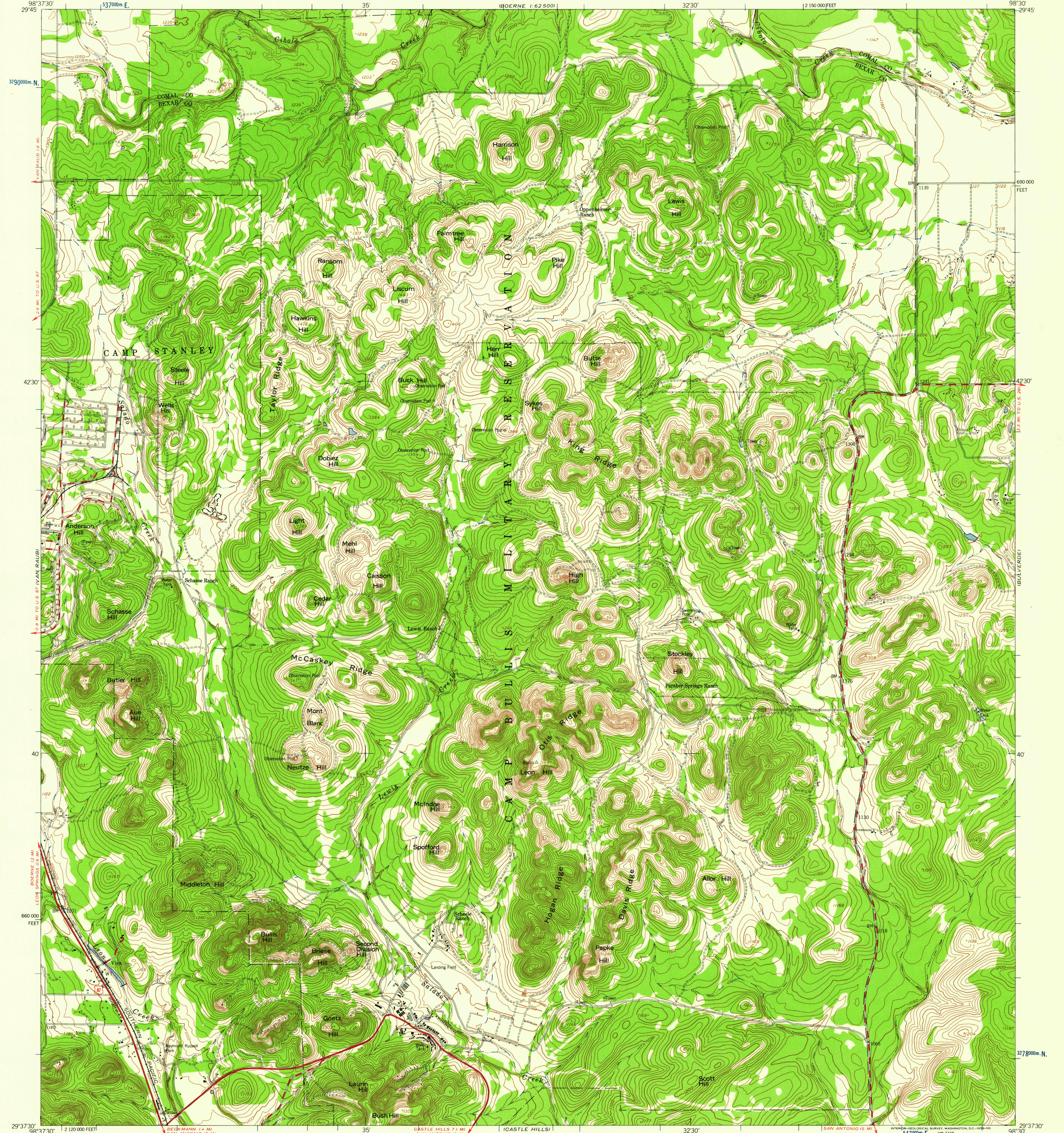
160° 30' E  
160° 35' E

UNITED STATES  
DEPARTMENT OF THE INTERIOR  
GEOLOGICAL SURVEY

UNITED STATES  
DEPARTMENT OF THE ARMY  
CORPS OF ENGINEERS

OTIS RIDGE QUADRANGLE  
TEXAS  
7.5 MINUTE SERIES (TOPOGRAPHIC)

SMITHSON VALLEY  
7.5 MINUTE SERIES



Mapped by the Army Map Service  
Published for civil use by the Geological Survey  
Control by USGS, USC&GS and USCE  
Topography from aerial photographs by photogrammetric methods  
Aerial photographs taken 1952. Photography field annotated 1953  
Polyconic projection. 1927 North American datum  
10,000-foot grid based on Texas coordinate system,  
south central zone  
1000-meter Universal Transverse Mercator grid ticks,  
zone 14, shown in blue  
Unchecked elevations are shown in brown

TRUE NORTH  
MAGNETIC NORTH  
APPROXIMATE MEAN  
DECLINATION, 1953

SCALE 1:24,000  
1 2 3 4 5 6 7 8 9 10 11 12 13 14 15 16 17 18 19 20 21 22 23 24 25 26 27 28 29 30 31 32 33 34 35 36 37 38 39 40 41 42 43 44 45 46 47 48 49 50 51 52 53 54 55 56 57 58 59 60 61 62 63 64 65 66 67 68 69 70 71 72 73 74 75 76 77 78 79 80 81 82 83 84 85 86 87 88 89 90 91 92 93 94 95 96 97 98 99 100  
1000 0 1000 2000 3000 4000 5000 6000 7000 FEET  
1 5 10 15 20 25 30 35 40 45 50 55 60 65 70 75 80 85 90 95 100  
1 KILOMETER  
CONTOUR INTERVAL 10 FEET  
DATUM IS MEAN SEA LEVEL



ROAD CLASSIFICATION  
Heavy-duty ——— Light-duty ———  
Medium-duty ——— Unimproved dirt ———  
U.S. Route

U.S.G.S.  
FILE COPY  
TOPOGRAPHIC DIVISION

OTIS RIDGE, TEX.  
N2937.5—W9830/7.5  
1953

THIS MAP COMPLIES WITH NATIONAL MAP ACCURACY STANDARDS  
FOR SALE BY U.S. GEOLOGICAL SURVEY, DENVER 25, COLORADO OR WASHINGTON 25, D.C.  
A FOLDER DESCRIBING TOPOGRAPHIC MAPS AND SYMBOLS IS AVAILABLE ON REQUEST

067-9 1953