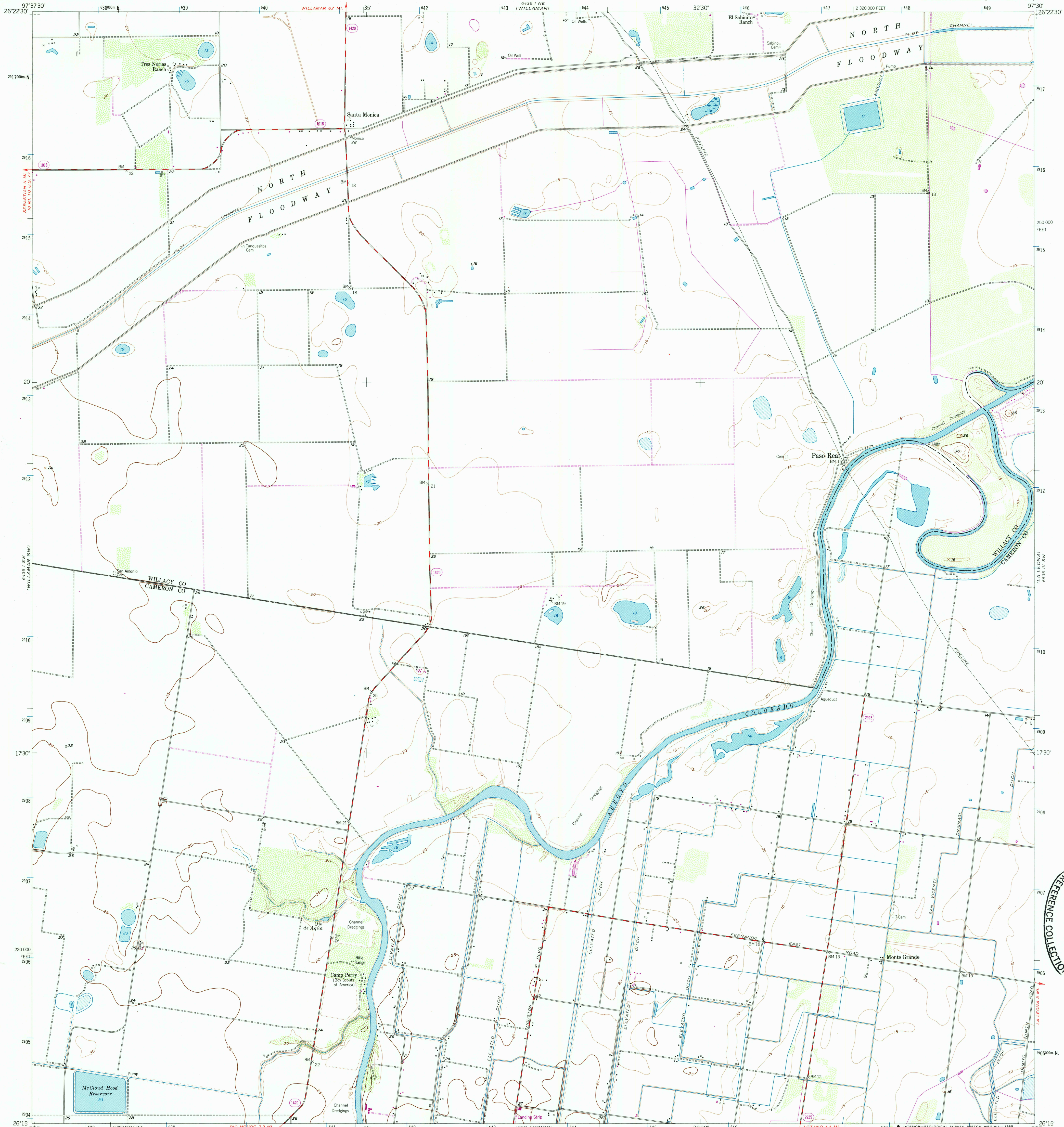


UNITED STATES
DEPARTMENT OF THE INTERIOR
GEOLOGICAL SURVEY

PASO REAL QUADRANGLE
TEXAS
7.5 MINUTE SERIES (TOPOGRAPHIC)



Mapped, edited, and published by the Geological Survey
Control by USGS and USC&GS

Culture and drainage in part compiled from aerial photographs
taken 1953. Topography from Paso Real quadrangle surveyed
1929, and Texas Reclamation Department mapping 1937,
revised 1956; and by planetable surveys 1956

Polyconic projection. 1927 North American Datum
10,000-foot grid based on Texas coordinate system,
south zone
1000-meter Universal Transverse Mercator grid ticks,
zone 14, shown in blue

Revisions shown in purple compiled from aerial photographs
taken 1970. This information not field checked

To place on the predicted North American Datum 1983
move the projection lines 33 meters south and
27 meters east as shown by dashed corner ticks

THIS MAP COMPLIES WITH NATIONAL MAP ACCURACY STANDARDS
FOR SALE BY U. S. GEOLOGICAL SURVEY, DENVER, COLORADO 80225, OR RESTON, VIRGINIA 22092
A FOLDER DESCRIBING TOPOGRAPHIC MAPS AND SYMBOLS IS AVAILABLE ON REQUEST

2697-241

Map photoinspected 1980
No major culture or drainage changes observed

PASO REAL, TEX.
26097-C5-TF-024

1956
PHOTOREVISED 1970
DMA 6436 1 SE-SERIES V882
PHOTOINSPECTED 1980

USGS NMD RESEARCH
OCT 2 2 1985
REFERENCE COLLECTION