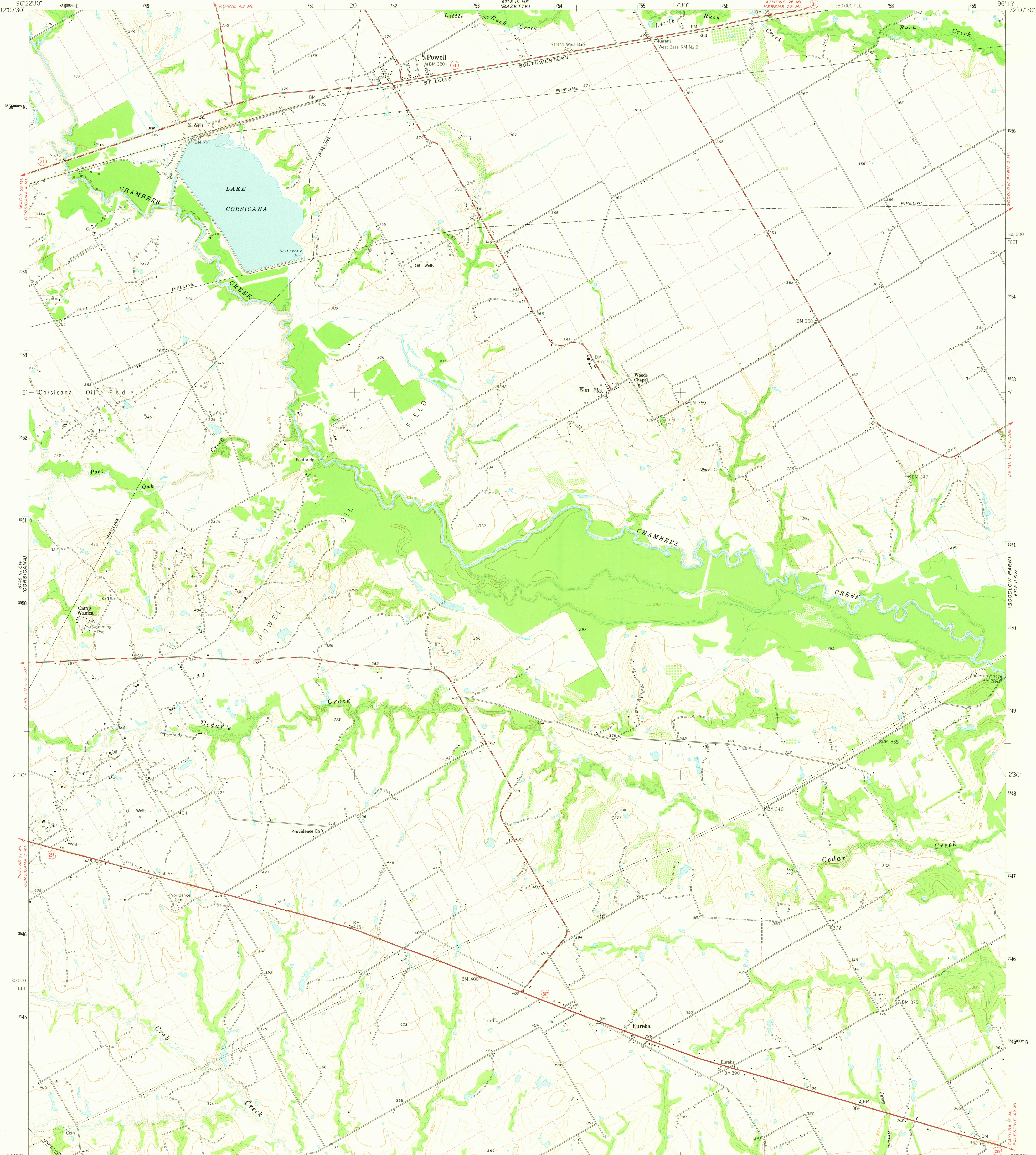


6748 III SE (BAZETTE)
6748 III NE (BAZETTE)
6748 III SW (BAZETTE)
6748 III NW (BAZETTE)
6748 III SE (BAZETTE)
6748 III NE (BAZETTE)
6748 III SW (BAZETTE)
6748 III NW (BAZETTE)

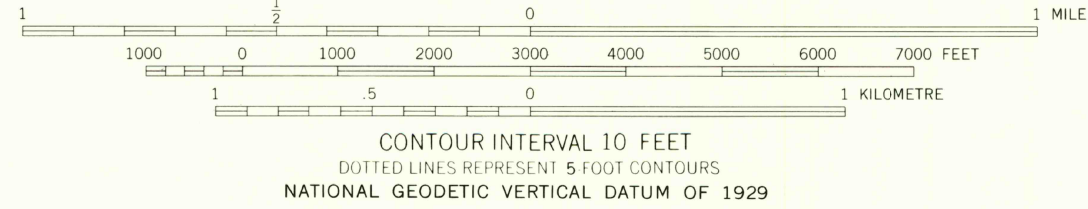
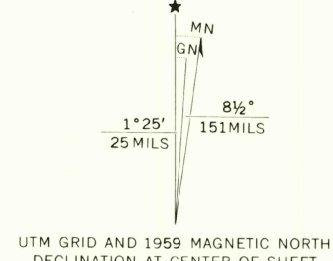
UNITED STATES
DEPARTMENT OF THE INTERIOR
GEOLOGICAL SURVEY

STATE OF TEXAS
BOARD OF WATER ENGINEERS

POWELL QUADRANGLE
TEXAS-NAVARRO CO.
7.5 MINUTE SERIES (TOPOGRAPHIC)



Mapped, edited, and published by the Geological Survey
Control by USGS and USC&GS
Topography from aerial photographs by photogrammetric methods
Aerial photographs taken 1958. Field check 1959
Polyconic projection. 1927 North American datum
10,000-foot grid based on Texas coordinate system,
north central zone
1000 metre Universal Transverse Mercator grid ticks,
zone 14, shown in blue
Fine red dashed lines indicate selected fences and field lines
where generally visible on aerial photographs
This information is unchecked



ROAD CLASSIFICATION			
Heavy-duty	Light-duty	Medium-duty	Unimproved dirt
U.S. Route	State Route		

MAR 20 1975
POWELL, TEX.
N3200-W9615/75

USGS
Historical File
Topographic Division

1959
AMS 6748 III SE-SERIES V882

THIS MAP COMPLIES WITH NATIONAL MAP ACCURACY STANDARDS
FOR SALE BY U. S. GEOLOGICAL SURVEY, DENVER, COLORADO 80225, OR RESTON, VIRGINIA 22092
A FOLDER DESCRIBING TOPOGRAPHIC MAPS AND SYMBOLS IS AVAILABLE ON REQUEST