

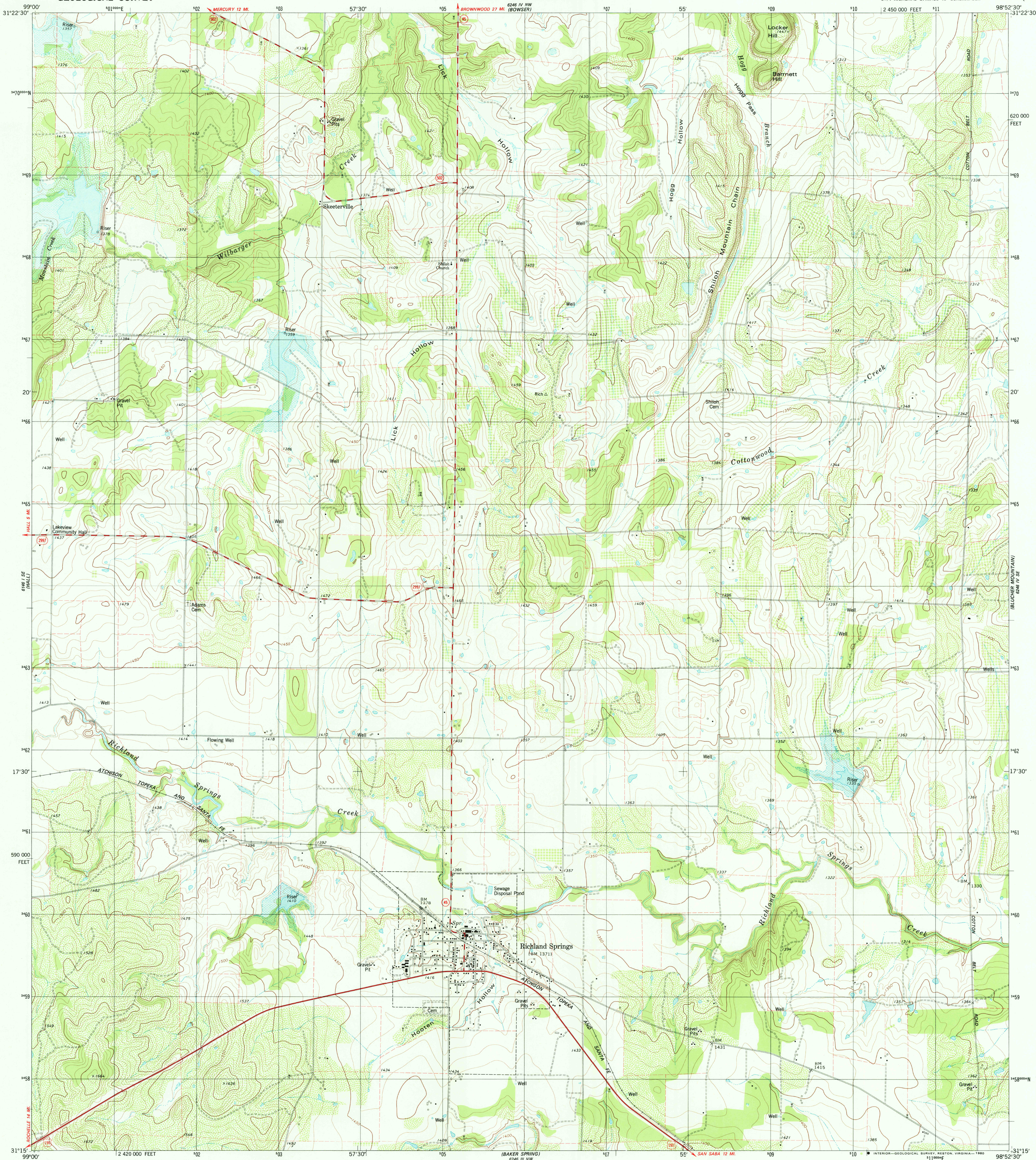
6246 IV NW
REL. 6000'

UNITED STATES
DEPARTMENT OF THE INTERIOR
GEOLOGICAL SURVEY

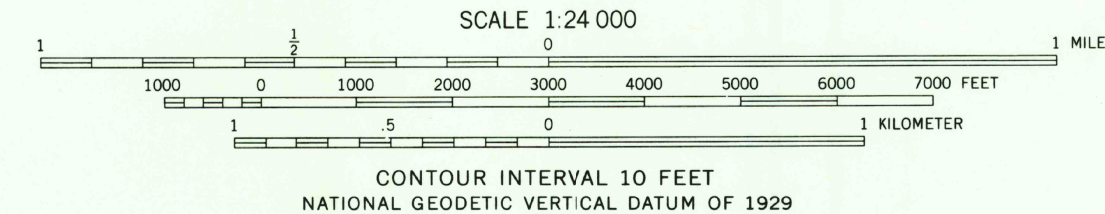
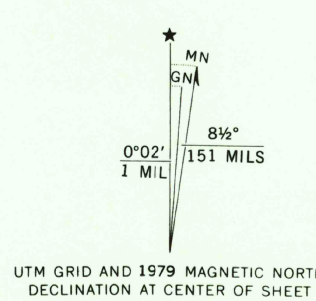
STATE OF TEXAS
TEXAS DEPARTMENT OF WATER RESOURCES

RICHLAND SPRINGS QUADRANGLE
TEXAS-SAN SABA CO.
7.5 MINUTE SERIES (TOPOGRAPHIC)
SW/4 RICHLAND SPRINGS 15' QUADRANGLE

6246 IV NE
REL. 6000'



Mapped, edited, and published by the Geological Survey
Control by USGS and NOS/NOAA
Topography by photogrammetric methods from aerial photographs taken 1975. Field checked 1976. Map edited 1979
Projection and 10,000-foot grid ticks: Texas coordinate system, central zone (Lambert conformal conic) 1000-meter Universal Transverse Mercator grid, zone 14 1927 North American datum
To place on the predicted North American Datum 1983 move the projection lines 14 meters south and 31 meters east as shown by dashed corner ticks
Areas covered by dashed light-blue pattern are subject to controlled inundation
Fine red dashed lines indicate selected fence lines



QUADRANGLE LOCATION

ROAD CLASSIFICATION
Primary highway, hard surface
Secondary highway, hard surface
Unimproved road
Light-duty road, hard or improved surface
Interstate Route
U. S. Route
State Route

USGS
Historical File
Topographic Division

RICHLAND SPRINGS, TEX.
SW/4 RICHLAND SPRINGS 15' QUADRANGLE
N3115-W9852.5/7.5

1979
DMA 6246 IV SW-SERIES V882

JUN 19 1980
2250

THIS MAP COMPLIES WITH NATIONAL MAP ACCURACY STANDARDS
FOR SALE BY U. S. GEOLOGICAL SURVEY, DENVER, COLORADO 80225, OR RESTON, VIRGINIA 22092
A FOLDER DESCRIBING TOPOGRAPHIC MAPS AND SYMBOLS IS AVAILABLE ON REQUEST