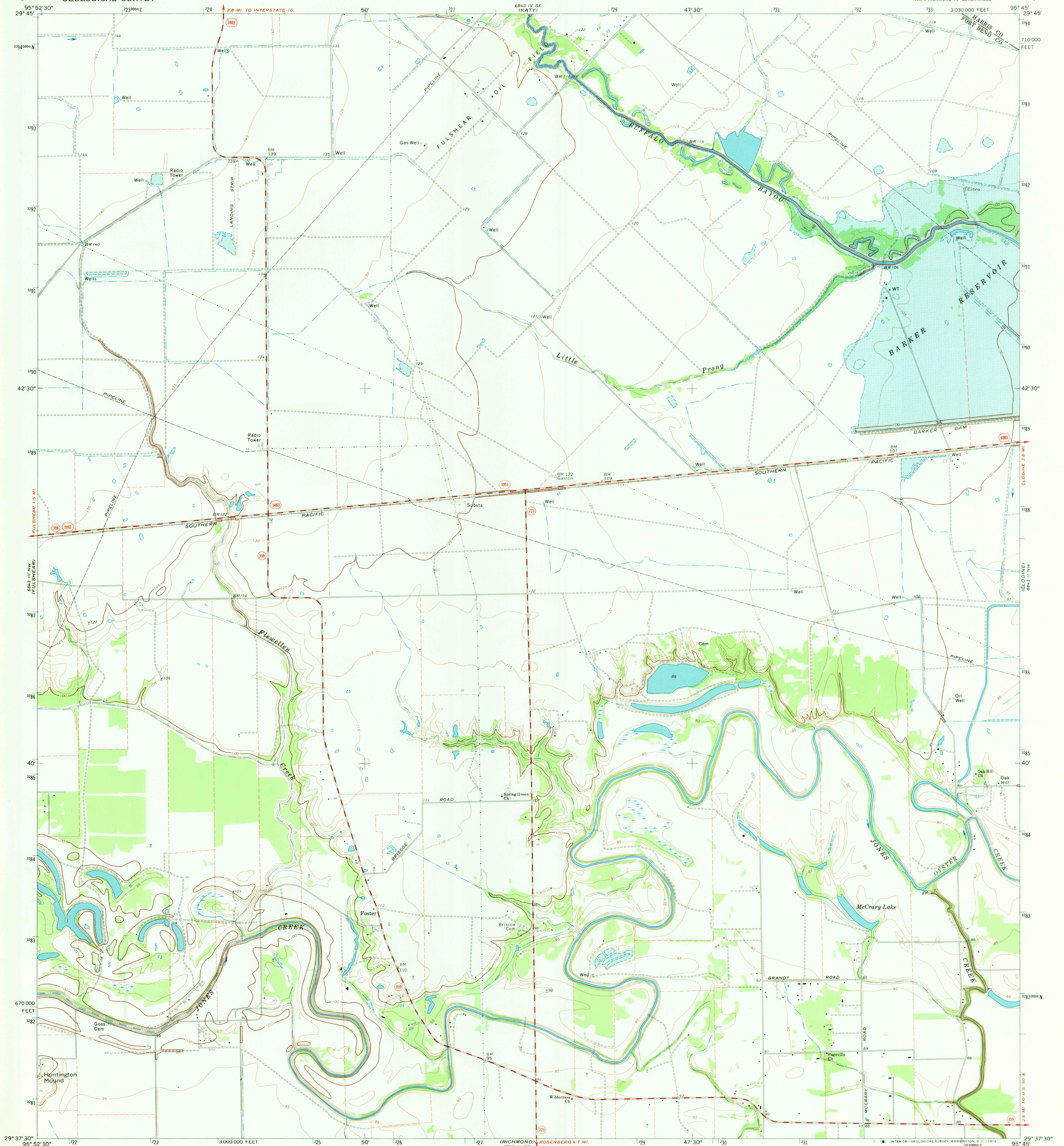
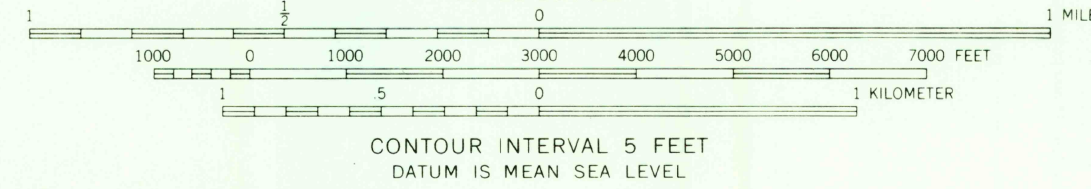
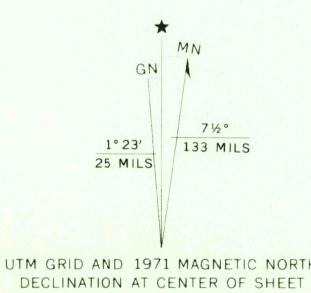


UNITED STATES  
DEPARTMENT OF THE INTERIOR  
GEOLOGICAL SURVEY

RICHMOND NE QUADRANGLE  
TEXAS  
7.5 MINUTE SERIES (TOPOGRAPHIC)



Maped, edited, and published by the Geological Survey  
Control by USGS and USC&GS  
Planimetry by photogrammetric methods from aerial  
photographs taken 1970. Topography enlarged from 1:62,500-  
scale map of Richmond quadrangle dated 1955. Topography  
by planimetric surveys. Field checked 1971.  
Projection and 10,000-foot grid ticks: Texas coordinate system,  
south central zone (Lambert conformal conic).  
1000-meter Universal Transverse Mercator grid ticks, zone 15,  
shown in blue. 1927 North American datum.  
Fine red dashed lines indicate selected fence lines.  
Areas covered by dashed light-blue pattern are  
subject to controlled inundation.



THIS MAP COMPLIES WITH NATIONAL MAP ACCURACY STANDARDS  
FOR SALE BY U.S. GEOLOGICAL SURVEY, DENVER, COLORADO 80225, OR WASHINGTON, D.C. 20244  
A FOLDER DESCRIBING TOPOGRAPHIC MAPS AND SYMBOLS IS AVAILABLE ON REQUEST



ROAD CLASSIFICATION  
Primary highway, hard surface  
Secondary highway, hard surface  
Unimproved road  
Interstate Route  
U. S. Route  
State Route

RICHMOND NE, TEX.  
NE 1/4 RICHMOND 15' QUADRANGLE  
N2937.5-W9545/7.5  
1971  
AMS 6843 III NE-SERIES V882

USGS  
Historical File  
Topographic Division

2895