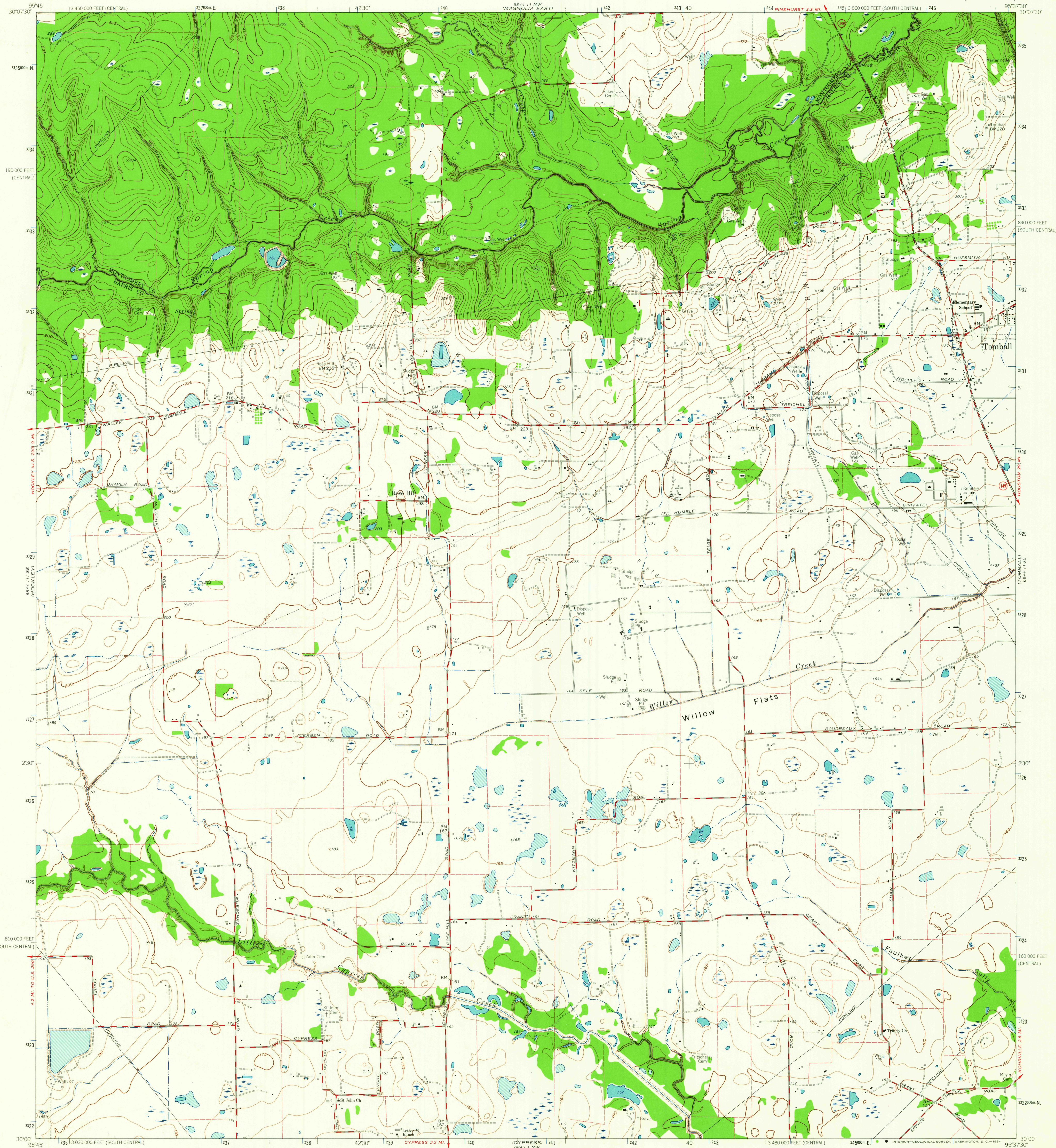
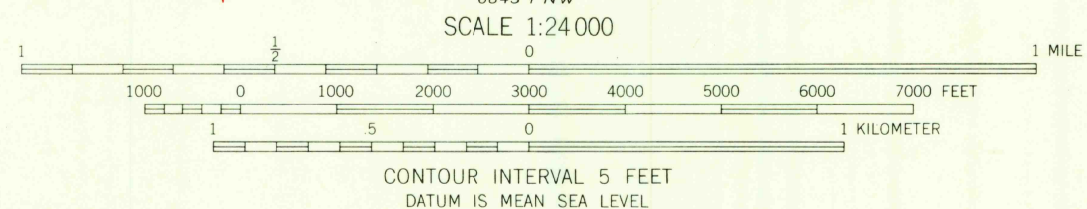
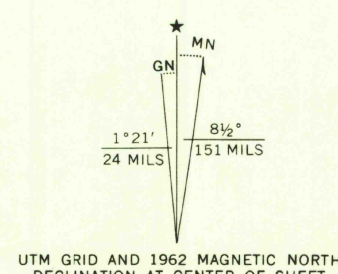


UNITED STATES
DEPARTMENT OF THE INTERIOR
GEOLOGICAL SURVEY

ROSE HILL QUADRANGLE
TEXAS
7.5 MINUTE SERIES (TOPOGRAPHIC)



Mapped, edited, and published by the Geological Survey
in cooperation with Texas Water Commission
Control by USGS and USC&GS
Planimetry by photogrammetric methods from aerial photographs
taken 1957. Topography by planetable surveys 1962
Polyconic projection. 1927 North American datum
10,000 foot grids based on Texas coordinate system,
south central and central zones
1000-meter Universal Transverse Mercator grid ticks,
zone 15, shown in blue
Fine red dashed lines indicate selected fence lines



ROAD CLASSIFICATION
Medium duty ——— Light duty ———
Unimproved dirt - - - - -
State Route ○

THIS MAP COMPLIES WITH NATIONAL MAP ACCURACY STANDARDS
FOR SALE BY U.S. GEOLOGICAL SURVEY, DENVER 25, COLORADO OR WASHINGTON 25, D.C.
A FOLDER DESCRIBING TOPOGRAPHIC MAPS AND SYMBOLS IS AVAILABLE ON REQUEST

ROSE HILL, TEX.
N3000-W9537 5/7.5
1962

AMS 6844 11 S-W SERIES V882