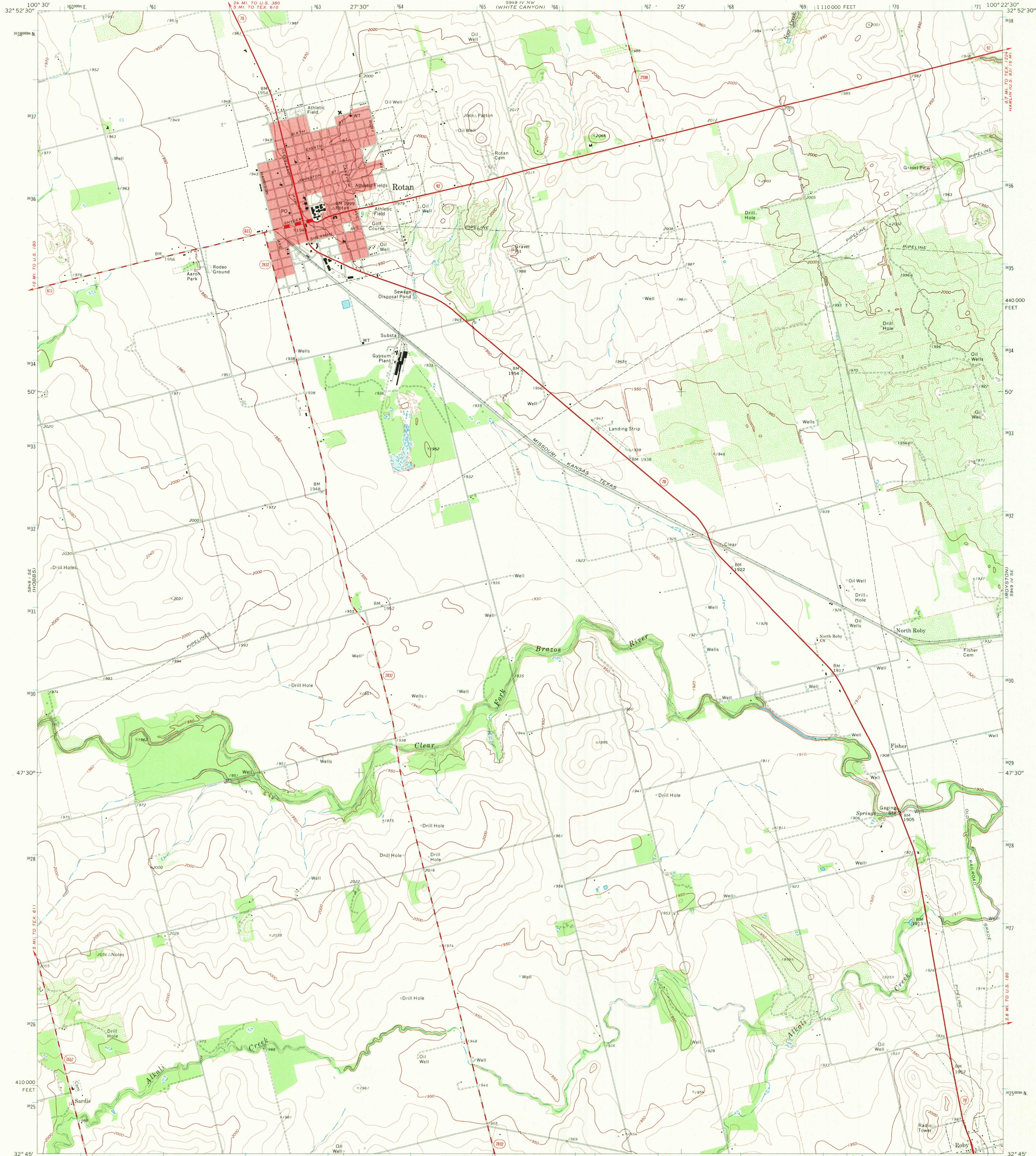
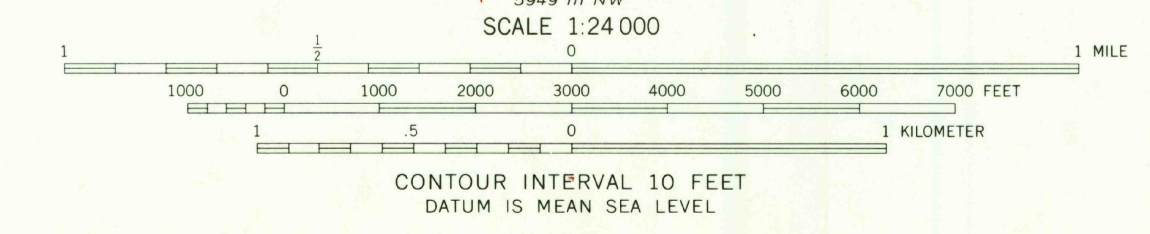
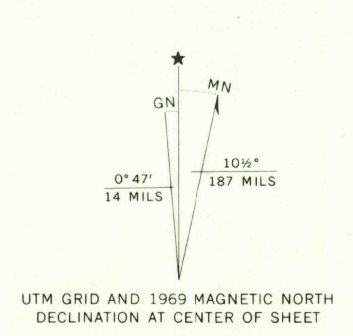


UNITED STATES  
DEPARTMENT OF THE INTERIOR  
GEOLOGICAL SURVEY

ROTAN QUADRANGLE  
TEXAS—FISHER CO.  
7.5 MINUTE SERIES (TOPOGRAPHIC)  
SW 1/4 ROTAN 15' QUADRANGLE



Mapped, edited, and published by the Geological Survey  
Control by USGS and USC&GS  
Topography by photogrammetric methods from aerial photographs taken 1966. Field checked 1969  
Polyconic projection. 1927 North American datum  
10,000-foot grid based on Texas coordinate system, north central zone  
1000-meter Universal Transverse Mercator grid ticks, zone 14, shown in blue  
Red tint indicates areas in which only landmark buildings are shown  
Fine red dashed lines indicate selected fence lines



THIS MAP COMPLIES WITH NATIONAL MAP ACCURACY STANDARDS  
FOR SALE BY U.S. GEOLOGICAL SURVEY, DENVER, COLORADO 80225, OR WASHINGTON, D.C. 20242  
A FOLDER DESCRIBING TOPOGRAPHIC MAPS AND SYMBOLS IS AVAILABLE ON REQUEST



ROAD CLASSIFICATION  
Primary highway, all weather, improved surface  
Secondary highway, all weather, hard surface  
Light-duty road, all weather, improved surface  
Unimproved road, fair or dry weather  
State Route

ROTAN, TEX.  
SW 1/4 ROTAN 15' QUADRANGLE  
N3245-W10022.5/7.5  
1969  
AMS 5949 IV SW—SERIES V882

OCT 2 1972  
2566