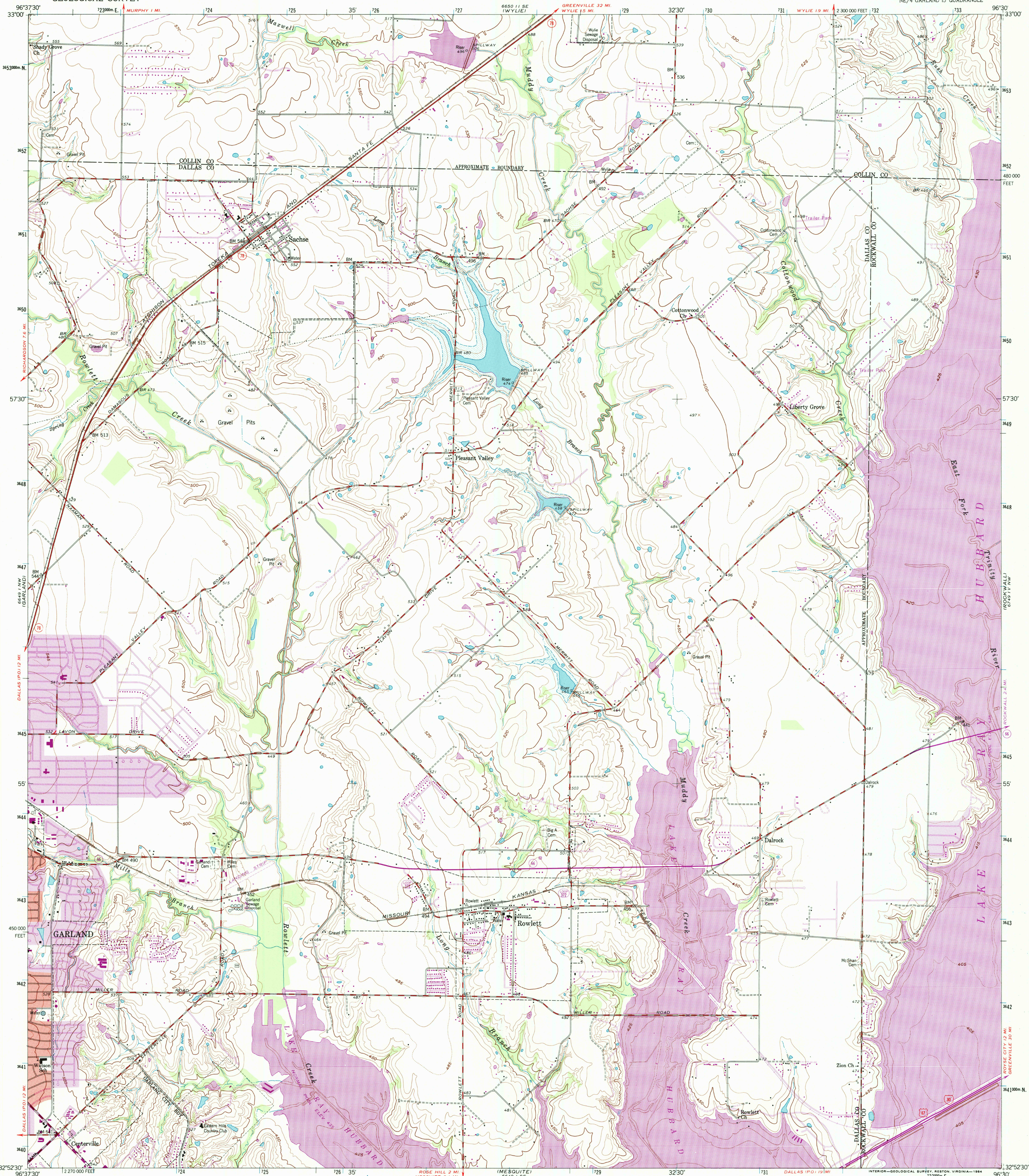


UNITED STATES
DEPARTMENT OF THE INTERIOR
GEOLOGICAL SURVEY

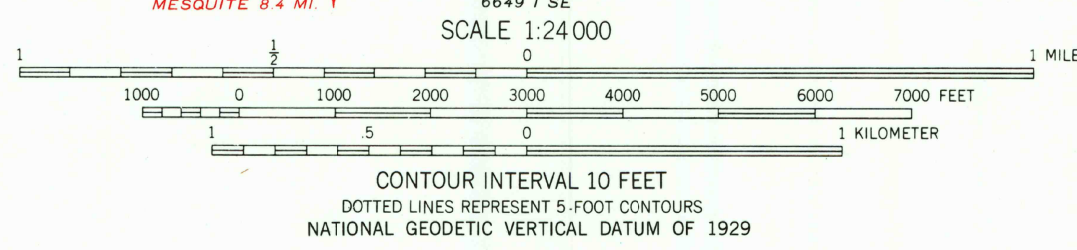
ROWLETT QUADRANGLE
TEXAS
7.5 MINUTE SERIES (TOPOGRAPHIC)
NE/4 GARLAND 15 QUADRANGLE



USGS HISTORICAL
MAP ACQUISITION
JUL 3 1 1998
REC'D FILE COPY

Maped, edited, and published by the Geological Survey
Control by USGS and USC&GS
Topography from aerial photographs by photogrammetric methods
Aerial photographs taken 1966. Field check 1969
Polyconic projection: 1927 North American Datum
10,000 foot grid based on Texas coordinate system,
north central zone
1000-meter Universal Transverse Mercator grid ticks,
zone 14, shown in blue
Red tint indicates areas in which only
landmark buildings are shown
Areas covered by dashed light blue pattern
are subject to controlled inundation
Revisions shown in purple compiled from aerial photographs
taken 1968 and 1973. This information not field checked
Purple tint indicates extension of urban areas

To place on the predicted North American Datum 1983
move the projection lines 10 meters south and
25 meters east as shown by dashed corner ticks



THIS MAP COMPLIES WITH NATIONAL MAP ACCURACY STANDARDS
FOR SALE BY U.S. GEOLOGICAL SURVEY, P.O. BOX 25286, DENVER, COLORADO 80225
A FOLDER DESCRIBING TOPOGRAPHIC MAPS AND SYMBOLS IS AVAILABLE ON REQUEST



ROAD CLASSIFICATION
Heavy-duty ——— Light-duty ———
Medium-duty ——— Unimproved dirt ———
Interstate Route U.S. Route State Route

ROWLETT, TEX.
NE/4 GARLAND 15 QUADRANGLE
32096-H5-TF-024

1959
PHOTOREVISED 1968 AND 1973
DMA 6649 1 NE-SERIES 1982

JUL 2 8 1998

