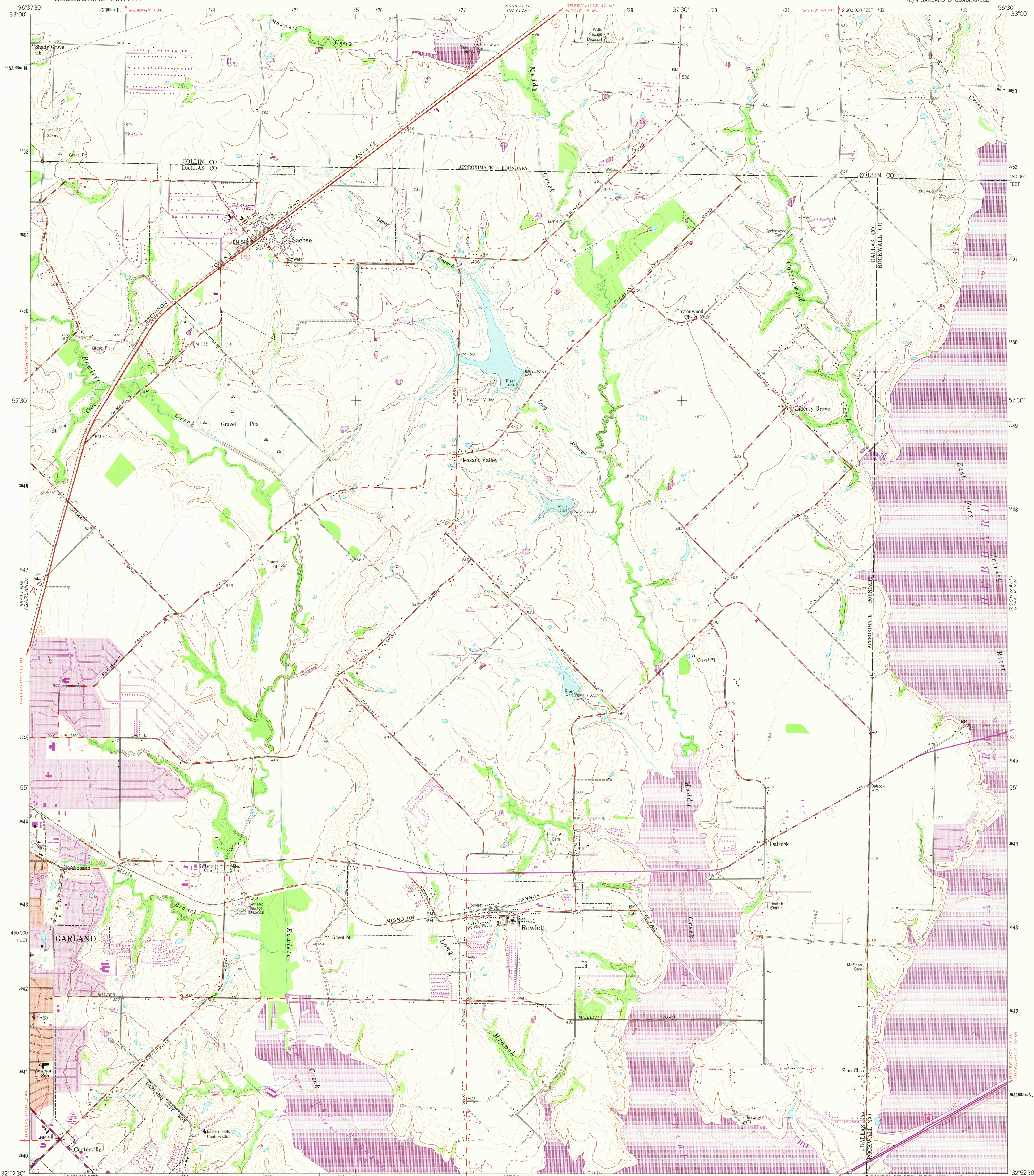


UNITED STATES
DEPARTMENT OF THE INTERIOR
GEOLOGICAL SURVEY

ROWLETT QUADRANGLE
TEXAS
7.5 MINUTE SERIES (TOPOGRAPHIC)
NE/4 GARLAND IS QUADRANGLE



Mapped, edited, and published by the Geological Survey
Control by USGS and USC&GS
Topography from aerial photographs by photogrammetric methods
Aerial photographs taken 1956. Field check 1959
Polyconic projection. 1927 North American datum
10,000-foot grid based on Texas coordinate system,
north central zone
1000-meter Universal Transverse Mercator grid ticks,
zone 14, shown in blue
Red tint indicates areas in which only
landmark buildings are shown
Areas covered by dashed light-blue pattern
are subject to controlled inundation
Revisions shown in purple compiled from aerial photographs
taken 1968 and 1973. This information not field checked
Purple tint indicates extension of urban areas

UTM GRID AND 1973 MAGNETIC NORTH
DECLINATION AT CENTER OF SHEET

SCALE 1:24,000
CONTOUR INTERVAL 10 FEET
DOTTED LINES REPRESENT 5-FOOT CONTOURS
DATUM IS MEAN SEA LEVEL

THIS MAP COMPLIES WITH NATIONAL MAP ACCURACY STANDARDS
FOR SALE BY U. S. GEOLOGICAL SURVEY, DENVER, COLORADO 80225, OR RESTON, VIRGINIA 22092
A FOLDER DESCRIBING TOPOGRAPHIC MAPS AND SYMBOLS IS AVAILABLE ON REQUEST



ROAD CLASSIFICATION
Heavy-duty ——— Light-duty ———
Medium-duty ——— Unimproved dirt ———
Interstate Route U.S. Route State Route

ROWLETT, TEX.
NE/4 GARLAND IS QUADRANGLE
N3252.5-W9630.7/5

USGS
Historical File
Topographic Division

1959
PHOTOREVISED 1968 AND 1973
AMS 6649 1 NE-SERIES V882

3150
50/100