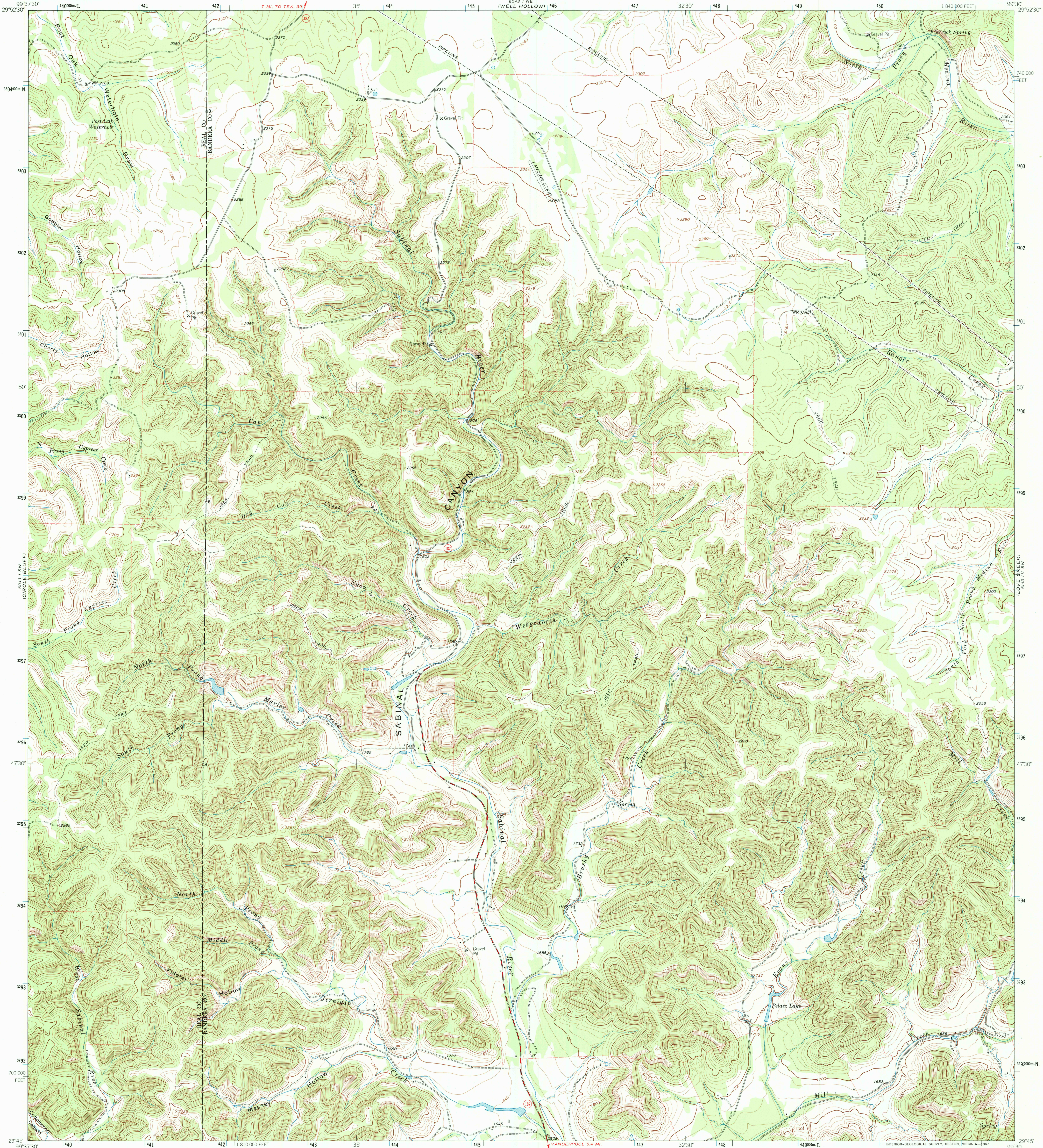




U.S. DEPARTMENT OF THE INTERIOR
U.S. GEOLOGICAL SURVEY

SABINAL CANYON QUADRANGLE
TEXAS
7.5 MINUTE SERIES (TOPOGRAPHIC)



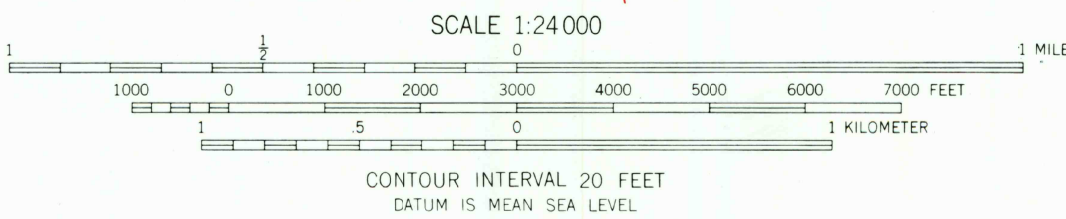
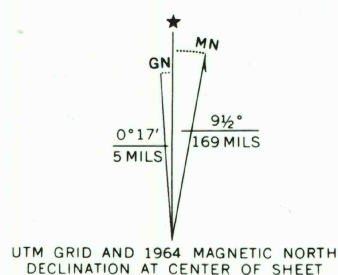
Mapped, edited, and published by the Geological Survey

Control by USGS and USC&GS

Topography by photogrammetric methods from aerial
photographs taken 1962. Field checked 1964

Polycyclic projection: 1927 North American datum
10,000-foot grid based on Texas coordinate system, south central zone
1000 meter Universal Transverse Mercator grid ticks,
zone 14, shown in blue

Fine red dashed lines indicate selected fence lines



THIS MAP COMPLIES WITH NATIONAL MAP ACCURACY STANDARDS
FOR SALE BY U.S. GEOLOGICAL SURVEY, P.O. BOX 25286, DENVER, COLORADO 80225
A FOLDER DESCRIBING TOPOGRAPHIC MAPS AND SYMBOLS IS AVAILABLE ON REQUEST



QUADRANGLE LOCATION

RECEIVED
DEC 31 1998

USGS NMD
HISTORICAL MAP ARCHIVES

SABINAL CANYON, TEX.
N2945-W9930/7.5

1964

AMS 6043 I SE-SERIES V882

