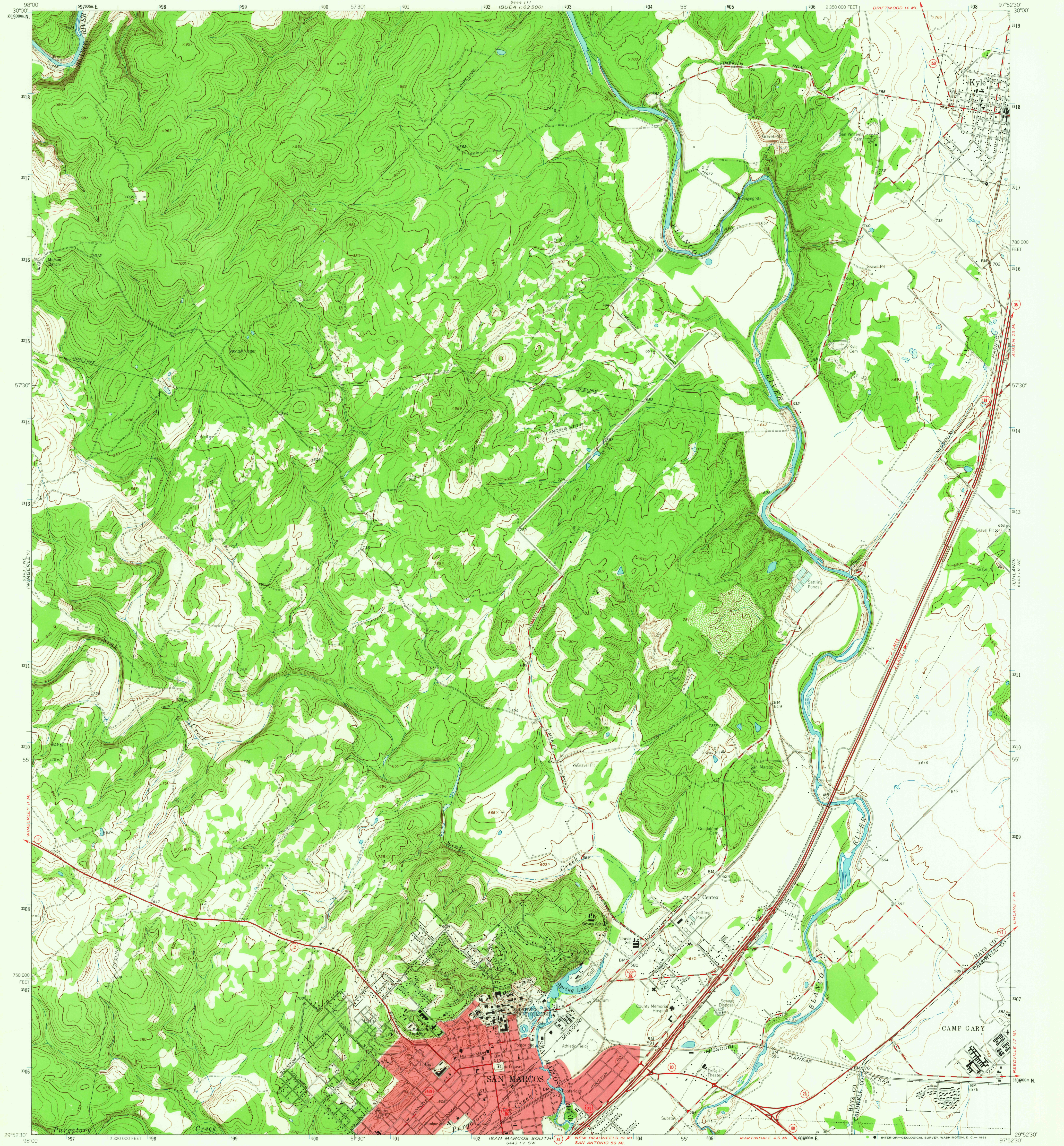


UNITED STATES  
DEPARTMENT OF THE INTERIOR  
GEOLOGICAL SURVEY

SAN MARCOS NORTH QUADRANGLE  
TEXAS  
7.5 MINUTE SERIES (TOPOGRAPHIC)



Mapped by the Army Map Service  
Edited and published by the Geological Survey

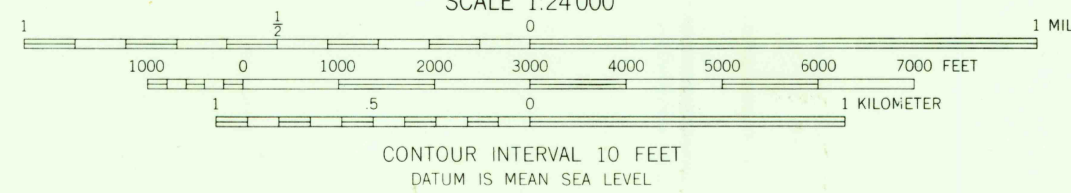
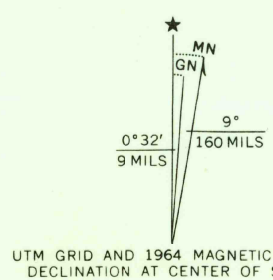
Control by USGS, USC&GS, and USCE

Topography by photogrammetric methods from aerial  
photographs taken 1958. Field checked by USGS 1964

Polyconic projection 1927 North American datum  
10,000-foot grid based on Texas coordinate system, south central zone  
1000 meter Universal Transverse Mercator grid ticks,  
zone 14, shown in blue

Red tint indicates area in which only landmark buildings are shown

Fine red dashed lines indicate selected fence lines



QUADRANGLE LOCATION

ROAD CLASSIFICATION	
Heavy-duty	Light-duty
Medium-duty	Unimproved dirt
Interstate Route	U.S. Route
	State Route

THIS MAP COMPLIES WITH NATIONAL MAP ACCURACY STANDARDS  
FOR SALE BY U.S. GEOLOGICAL SURVEY, DENVER, COLORADO 80225, OR WASHINGTON, D. C. 20242  
A FOLDER DESCRIBING TOPOGRAPHIC MAPS AND SYMBOLS IS AVAILABLE ON REQUEST

U.S.G.S.  
TOPOGRAPHIC DIVISION

SAN MARCOS NORTH, TEX.  
N2952 5 - W9752 5/7.5

1964

AMS 6443 IV NW - SERIES V882

2605