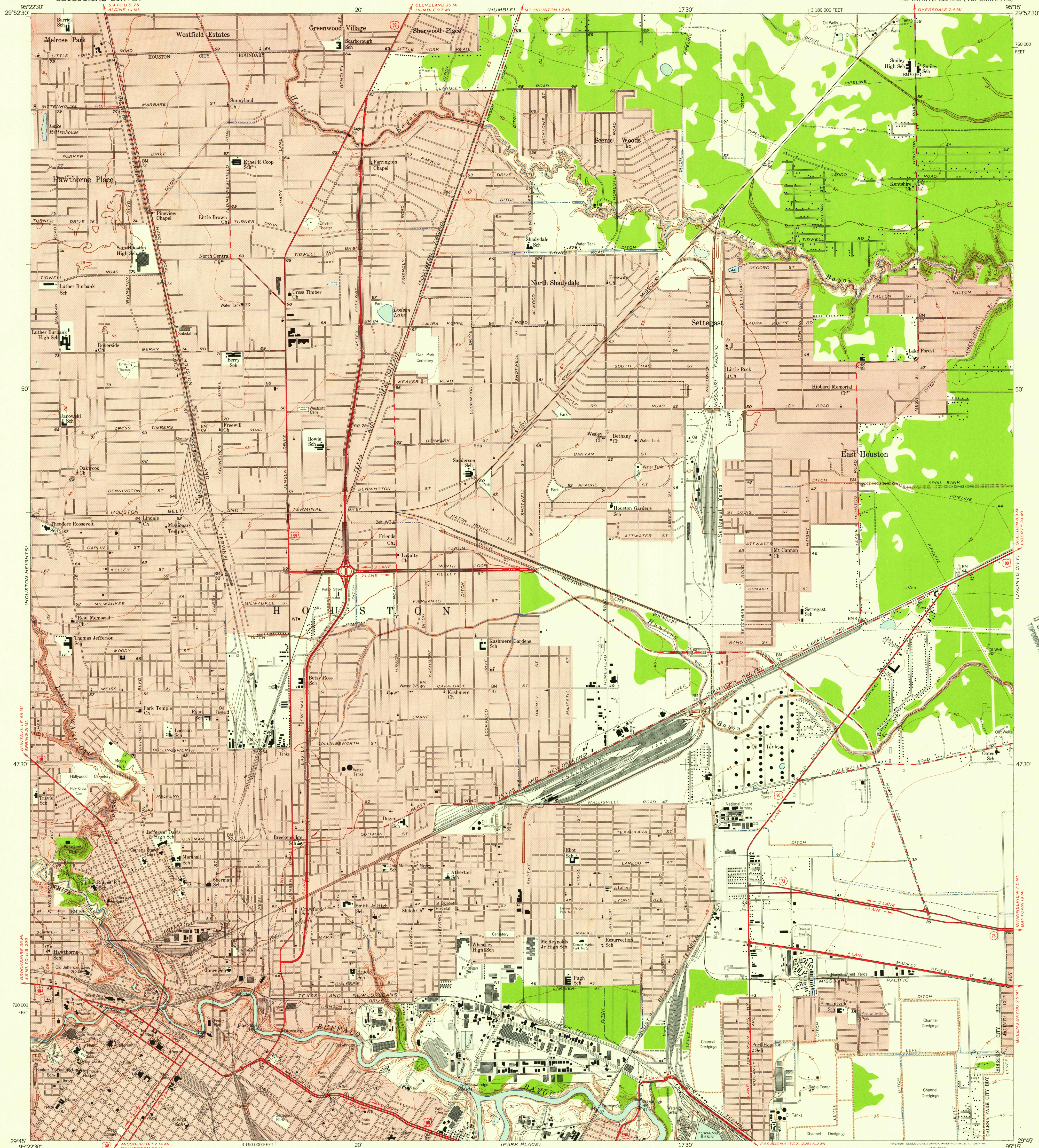


UNITED STATES  
DEPARTMENT OF THE INTERIOR  
GEOLOGICAL SURVEY

SETTECAST QUADRANGLE  
TEXAS-HARRIS CO.  
7.5 MINUTE SERIES (TOPOGRAPHIC)



Maped, edited, and published by the Geological Survey  
Control by USGS, USC&GS, and TVA  
Culture and drainage in part compiled from aerial photographs  
taken 1953. Topography from 1943 map of U.S. Corps of  
Engineers, revised by USGS planetable surveys 1955.  
Settegast 7.5 minute quadrangle originally mapped by USGS 1916  
Polyconic projection. 1927 North American datum  
10,000-foot grid based on Texas coordinate system,  
south central zone  
Red tint indicates areas in which only  
landmark buildings are shown

APPROXIMATE MEAN  
DECLINATION, 1955

SCALE 1:24,000  
1 0 1000 2000 3000 4000 5000 6000 7000 FEET  
1 0 5 10 15 20 25 30 35 40 45 50 55 60 65 70 75 80 85 90 95 100 METERS  
CONTOUR INTERVAL 5 FEET  
DATUM IS MEAN SEA LEVEL  
THIS MAP COMPLIES WITH NATIONAL MAP ACCURACY STANDARDS  
FOR SALE BY U.S. GEOLOGICAL SURVEY, DENVER 2, COLORADO OR WASHINGTON 25, D.C.  
A FOLDER DESCRIBING TOPOGRAPHIC MAPS AND SYMBOLS IS AVAILABLE ON REQUEST

ROAD CLASSIFICATION  
Heavy-duty ——— Light-duty ———  
Medium-duty ——— Unimproved dirt ———  
U.S. Route ——— State Route ———



U.S.G.S.  
FILE COPY  
TOPOGRAPHIC DIVISION

SETTECAST, TEX.  
N2945-W9515/7.5

1955 MAR 26 1957

4785