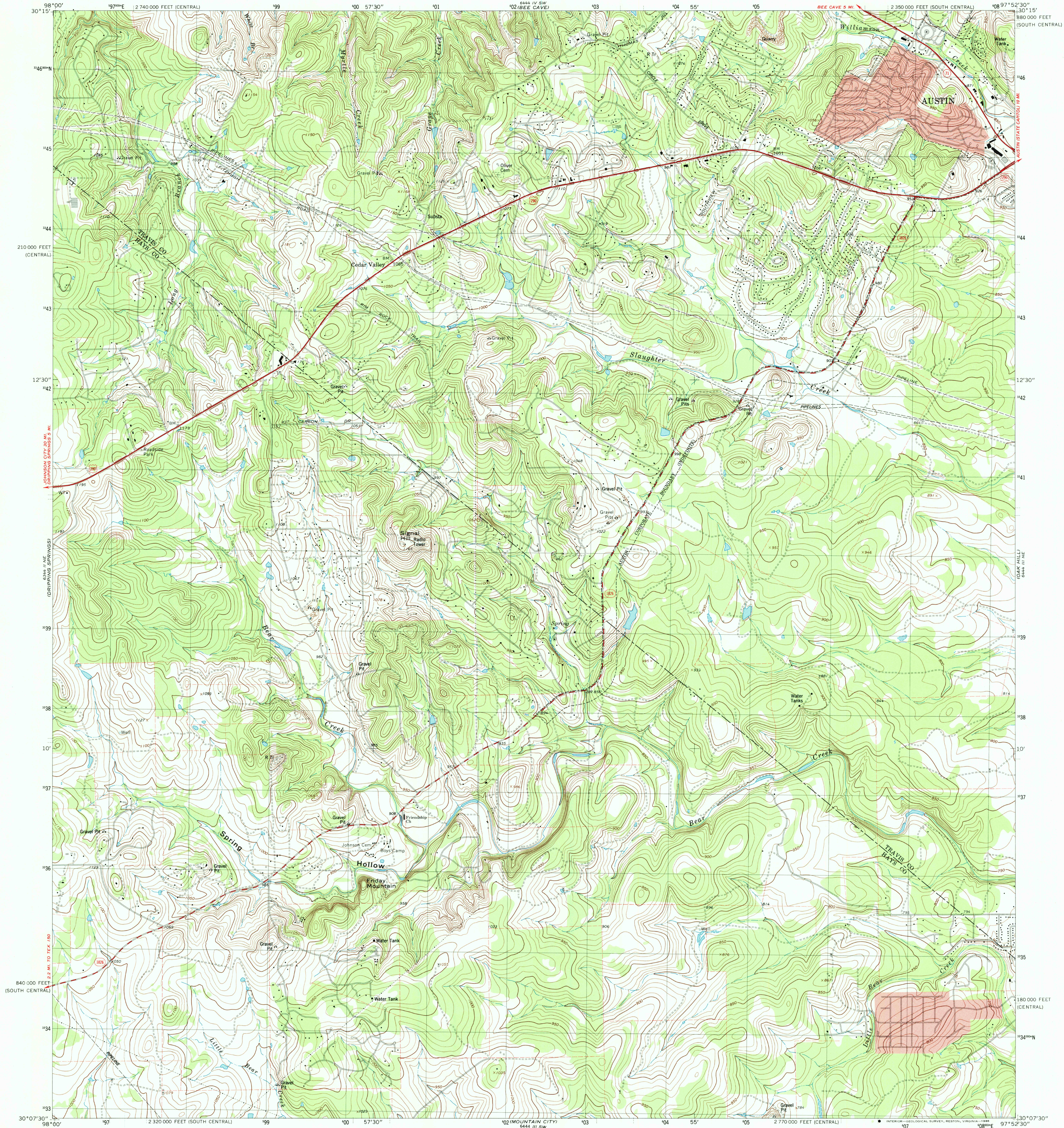
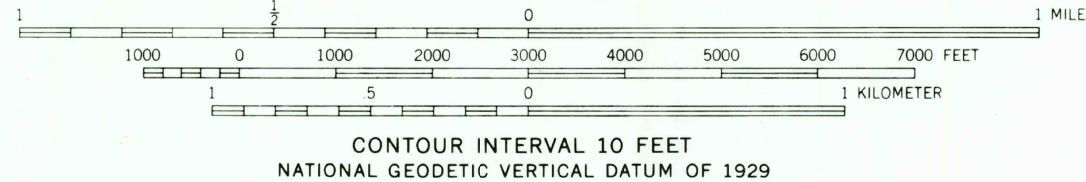
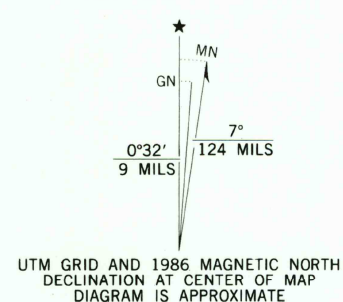


UNITED STATES
DEPARTMENT OF THE INTERIOR
GEOLOGICAL SURVEY

SIGNAL HILL QUADRANGLE
TEXAS
7.5 MINUTE SERIES (TOPOGRAPHIC)
NW/4 BUDA 15' QUADRANGLE
NW/4 BUDA 15' QUADRANGLE



Mapped, edited, and published by the Geological Survey
Control by USGS and NOS/NOAA
Topography by photogrammetric methods from aerial photographs taken 1967. Field checked 1968. Revised from aerial photographs taken 1985. Field checked 1986. Map edited 1986
Projection: Texas coordinate system, south central zone (Lambert conformal conic)
10,000-foot grid ticks based on Texas coordinate system, south central and central zones
1000-meter Universal Transverse Mercator grid, zone 14
1927 North American Datum
To place on the predicted North American Datum 1983 move the projection lines 18 meters south and 28 meters east as shown by dashed corner ticks
Fine red dashed lines indicate selected fence lines
Red tint indicates areas in which only landmark buildings are shown

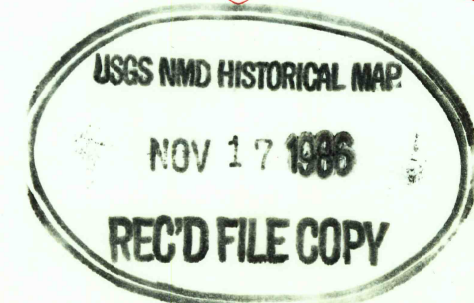


THIS MAP COMPLIES WITH NATIONAL MAP ACCURACY STANDARDS
FOR SALE BY U. S. GEOLOGICAL SURVEY, DENVER, COLORADO 80225, OR RESTON, VIRGINIA 22092
A FOLDER DESCRIBING TOPOGRAPHIC MAPS AND SYMBOLS IS AVAILABLE ON REQUEST



3097-223

ROAD CLASSIFICATION
Primary highway, hard surface ——— Light duty road, hard or improved surface ———
Secondary highway, hard surface ——— Unimproved road ———
Interstate Route ——— U. S. Route ——— State Route ———



SIGNAL HILL, TEX.
NW/4 BUDA 15' QUADRANGLE
30097-BB-TF-024
1986
DMA 6444 III NW-SERIES V882