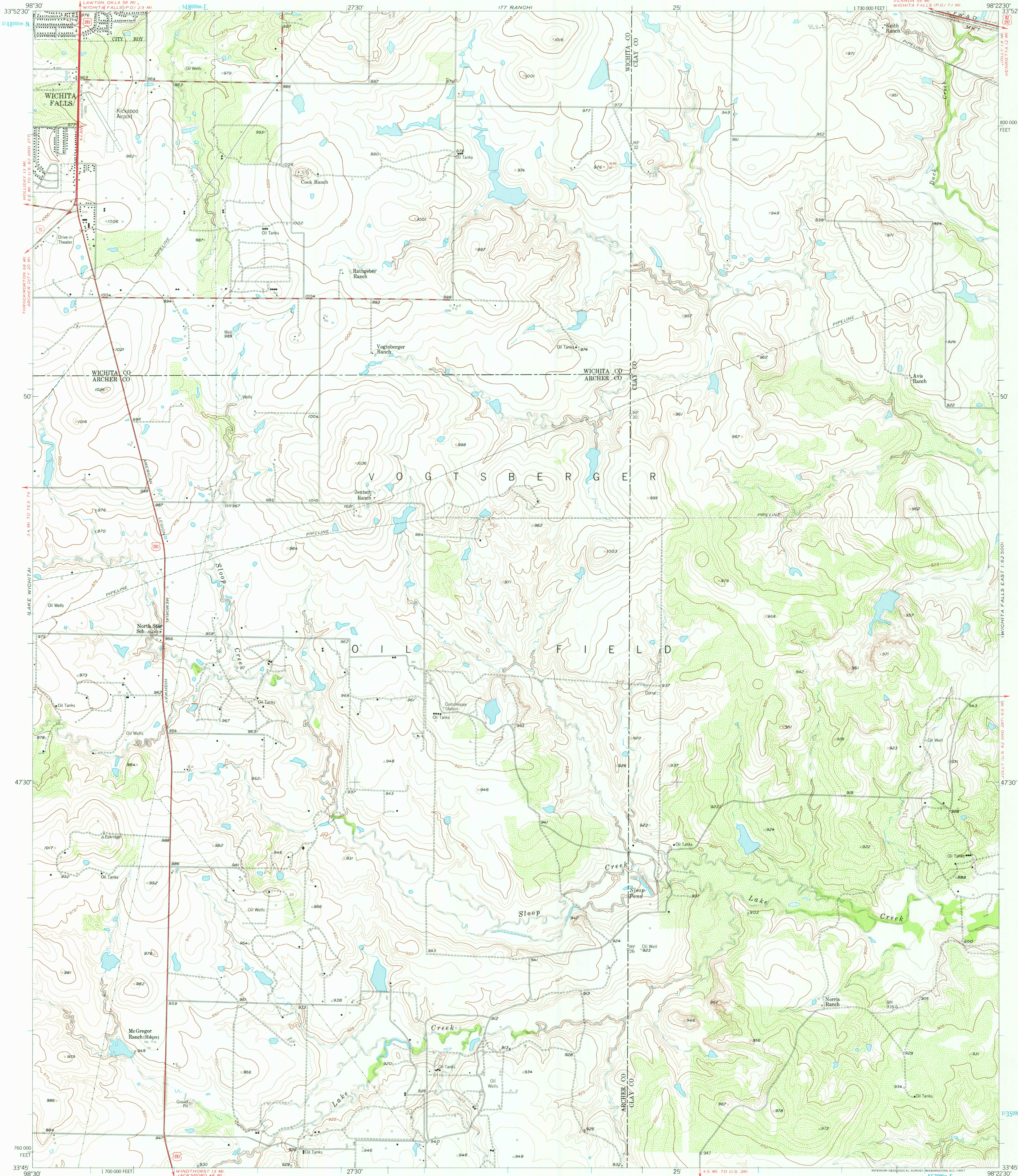


UNITED STATES
DEPARTMENT OF THE INTERIOR
GEOLOGICAL SURVEY

SLOOP CREEK QUADRANGLE

TEXAS
7.5 MINUTE SERIES (TOPOGRAPHIC)
SW 1/4 WICHITA FALLS EAST 15 QUADRANGLE
WICHITA FALLS (PO 1.1 MI.)

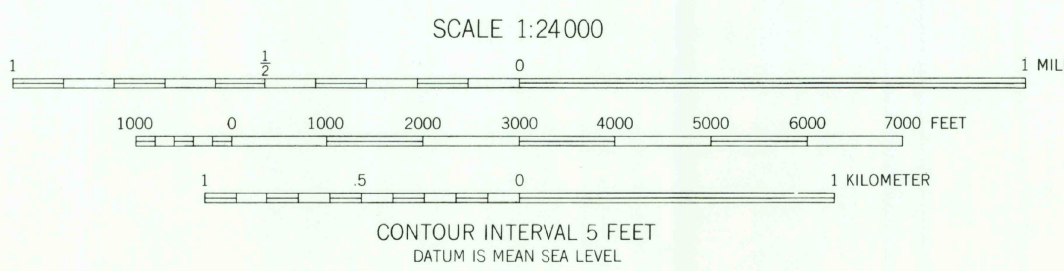
WICHITA FALLS EAST
1:62,500



ARCHER CITY
1:62,500

Mapped, edited, and published by the Geological Survey
Control by USGS and USC&GS
Culture and drainage in part compiled from aerial photographs
taken 1954. Topography by planetable surveys 1956
Polyconic projection. 1927 North American datum
10,000-foot grid based on Texas coordinate system,
north central zone
1000-meter Universal Transverse Mercator grid ticks,
zone 14, shown in blue

TRUE NORTH
MAGNETIC NORTH
APPROXIMATE MEAN
DECLINATION, 1956



ROAD CLASSIFICATION
Heavy-duty ——— Light-duty ———
Medium-duty ——— Unimproved dirt ———
U.S. Route ——— State Route ———

USGS
Historical File
Topographic Division

SLOOP CREEK, TEX.
SW 1/4 WICHITA FALLS EAST 15 QUADRANGLE
N3345-W9822.5/7.5
1956

120°
JUL 12 1977

THIS MAP COMPLIES WITH NATIONAL MAP ACCURACY STANDARDS
FOR SALE BY U.S. GEOLOGICAL SURVEY, DENVER 2, COLORADO OR WASHINGTON 25, D.C.
A FOLDER DESCRIBING TOPOGRAPHIC MAPS AND SYMBOLS IS AVAILABLE ON REQUEST