

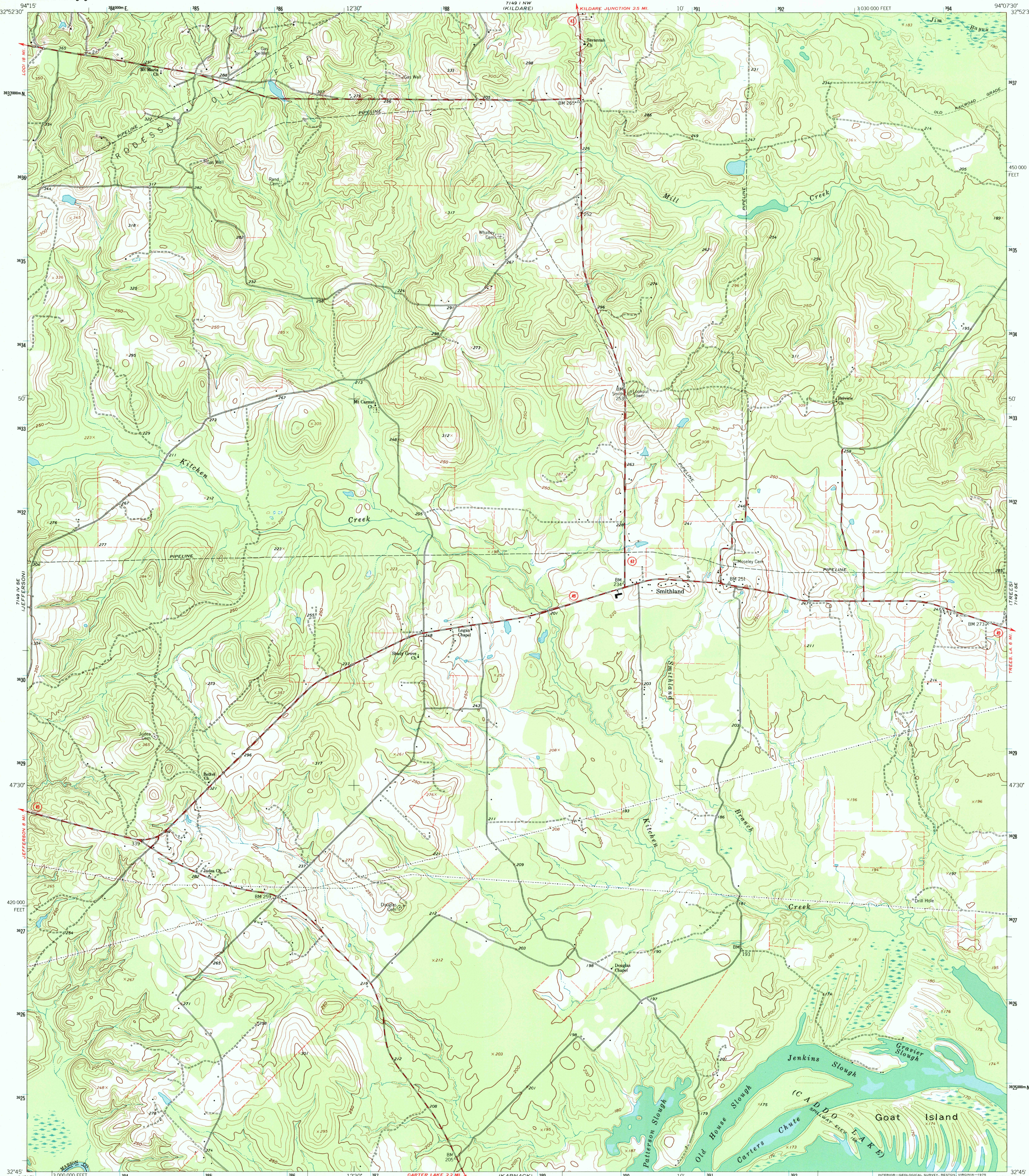
7149 I NE
7149 I SE
7149 I SW
7149 I NW



U.S. DEPARTMENT OF THE INTERIOR
U.S. GEOLOGICAL SURVEY

SMITHLAND QUADRANGLE
TEXAS
7.5 MINUTE SERIES (TOPOGRAPHIC)

7149 I NE
7149 I SE
7149 I SW
7149 I NW



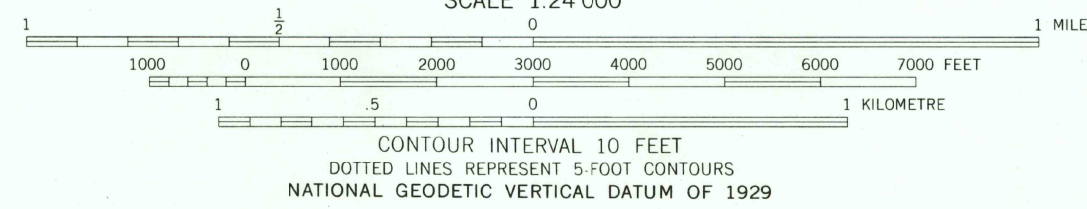
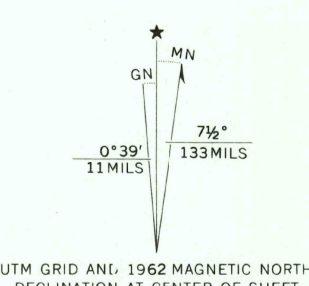
Mapped, edited, and published by the Geological Survey

Control by USGS and USC&GS

Topography by photogrammetric methods from aerial
photographs taken 1958. Field checked 1962

Polyconic projection. 1927 North American datum
10,000 foot grid based on Texas coordinate system, north central zone
1000 metre Universal Transverse Mercator grid ticks,
zone 15, shown in blue

Fine red dashed lines indicate selected fence lines



QUADRANGLE LOCATION



RECEIVED
MAY 31 1999

USGS NMD
HISTORICAL MAP ARCHIVES

SMITHLAND, TEX.

N3245-W9407.5/7.5

1962

AMS 7149 I SW-SERIES V882

THIS MAP COMPLIES WITH NATIONAL MAP ACCURACY STANDARDS
FOR SALE BY U.S. GEOLOGICAL SURVEY, P.O. BOX 25286, DENVER, COLORADO 80225
A FOLDER DESCRIBING TOPOGRAPHIC MAPS AND SYMBOLS IS AVAILABLE ON REQUEST

