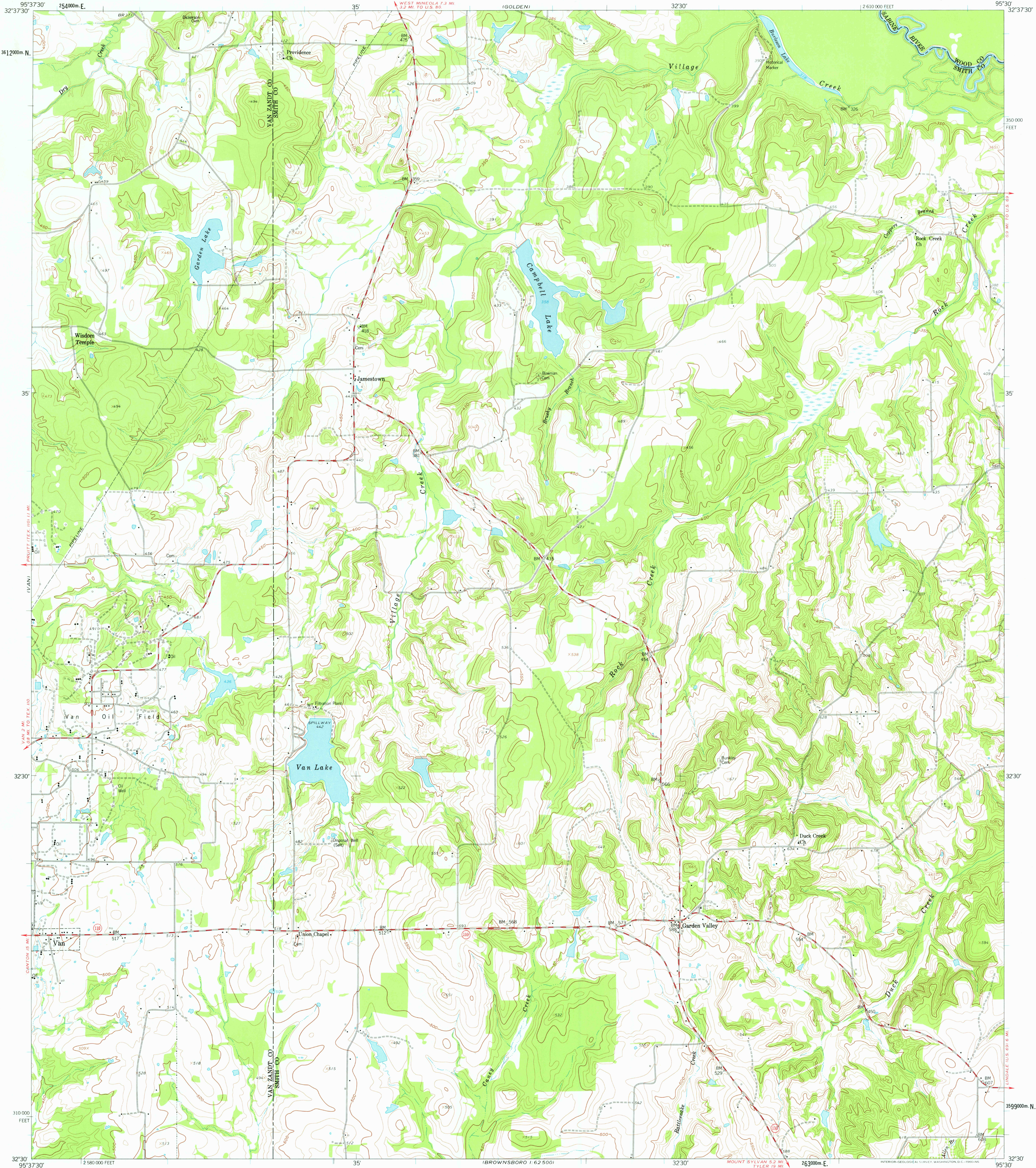


(GRAND SALINE)  
(BROWNSBORO) 1:62,500

UNITED STATES  
DEPARTMENT OF THE INTERIOR  
GEOLOGICAL SURVEY

VAN LAKE QUADRANGLE  
TEXAS  
7.5 MINUTE SERIES (TOPOGRAPHIC)  
SE/4 GRAND SALINE 15' QUADRANGLE



Mapped, edited, and published by the Geological Survey  
Control by USGS and USC&GS  
Topography from aerial photographs by photogrammetric methods  
Aerial photographs taken 1957-1958. Field check 1959  
Polyconic projection. 1927 North American datum  
10,000-foot grid based on Texas coordinate system,  
north central zone  
1000-meter Universal Transverse Mercator grid ticks,  
zone 15, shown in blue  
Unchecked elevations are shown in brown

TRUE NORTH  
MAGNETIC NORTH  
APPROXIMATE MEAN  
DECLINATION, 1959

SCALE 1:24,000  
1 1000 0 1000 2000 3000 4000 5000 6000 7000 FEET  
1 KILOMETER  
CONTOUR INTERVAL 10 FEET  
DOTTED LINES REPRESENT 5 FOOT CONTOURS  
DATUM IS MEAN SEA LEVEL

THIS MAP COMPLIES WITH NATIONAL MAP ACCURACY STANDARDS  
FOR SALE BY U.S. GEOLOGICAL SURVEY, DENVER 25, COLORADO OR WASHINGTON 25, D.C.  
A FOLDER DESCRIBING TOPOGRAPHIC MAPS AND SYMBOLS IS AVAILABLE ON REQUEST



QUADRANGLE LOCATION

ROAD CLASSIFICATION  
Medium-duty ——— Light-duty ———  
Unimproved dirt ———  
State Route  
USGS  
Historical File  
Topographic Division  
VAN LAKE, TEX.  
SE/4 GRAND SALINE 15' QUADRANGLE  
N3230-W9530/7.5  
1959

JUL 20 1977

1,700